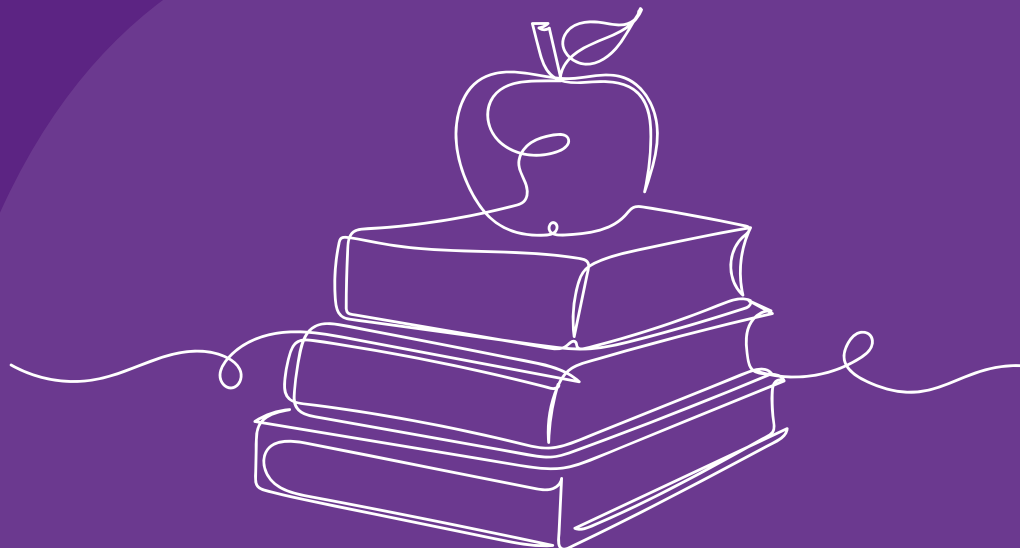


2024
—
2025

Guide to
Mamer & Capellen
fundamental schools

SCH OUL BUET

*french / german
versions*



IMPRESSUM

01

General information

Preface	03
Foreword by the presidents	04
Vade-Mecum	06
General information	07
Assistance and Social services	08
School libraries	10
Vivarium	12
Physical education and swimming	13
Smartphones and smartwatches & School rules	14
Internet & social media	15
School system	16

02

Primary School Mamer

General information	20
School Development Planning	21
Teaching staff	22
School transport	26
Parent representatives	34
Kinneksbond infrastructures	35

03

Primary School Capellen

General information	38
School Development Planning	39
Teaching staff	40
School transport	44
Parents' representatives	49

04

General information

Maison Relais transition centres	50
Social & support services	52
Parents' associations	53
Art at school/Music at school	54
Lasep	55
The safe way to school	56
Lycée Mamer	57
Sms2citizen Messenger Service	58
Welcome Breakfast APEM & APECH	59
School holidays	60



Mayor Luc Feller, surrounded by aldermen Roger Negri and Ed Buchette and alderwoman Francine Cloeser.

The Mamer Schoulen "Schoulbuet" is published under the responsibility of the College of Mayor and Aldermen of the Municipality of Mamer.



SCHOOL IS MUCH MORE THAN A CLASSROOM

The role of the school has evolved considerably over the years. In an ever-changing world, and in a municipality of over 11,000 inhabitants, basic education faces challenges that go far beyond the simple transmission of knowledge. The schools in Mamer and Capellen are ready to meet these new challenges. The reputation of these two establishments is excellent and the schools continue to grow, accommodating more than 800 pupils in the 2024-2025 school year.

The municipality continues to invest in our children. The new school swimming pool will open in September. A new Maison Relais transition centre is currently being finalised.

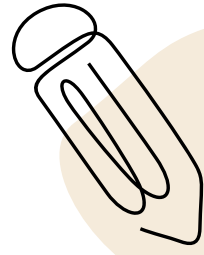
The teaching staff will continue to focus on human teaching, integration and inclusion. The school offer will be expanded, including extracurricular classes and

support classes. The already successful iPad project will be extended. Numerous enriching nature-based educational activities such as Beiendag (Bee Day), Apeldag (Apple Day) and tree and hedge planting will continue to be offered. These activities will be complemented by a 'Schoul an der Natur' (School in Nature) project.

All these activities and initiatives are aimed at preparing children not only for further education and working life, but also for life in general. What's more, they contribute to improving co-existence advancements within the school and in this way help to strengthen social cohesion within our municipality.

I would like to extend my warmest thanks to the teaching staff, the managers of the Maisons Relais centres and the parents for their availability, commitment and dedication. I wish you all an excellent start to the new school year.

Mayor
Luc FELLER



WHAT'S NEW FOR THE AUTUMN



Dear parents,
To open the preface to the new Schoulbuet 2024, we'd like to take a look back. During the first term of the 2023-2024 school year, the two basic schools of the municipality of Mamer evaluated their School Development Plan 2 (SDP2), which was initiated in 2019, before the pandemic.

This evaluation provided an opportunity for teachers from both schools to draw up an assessment of the current situation, on the basis of which the broad outlines and objectives of the School Development Plan 3 (SDP3) for the next three years were determined. The committee and Regional Management 2 Mamer have issued their opinions. The broad outlines and objectives of the SDPs for the two schools were approved by the Local Council on 15. July 2024. As of this autumn, the working groups that have been active since SDP2 will be drawing up their new secondary objectives and a corresponding action plan.

We are delighted to see so many projects coming to fruition under the SDP and to offer new opportunities for our pupils. Collaboration between teachers and the local authority has been essential in achieving these objectives. We are convinced that these initiatives will enrich our pupils school experience.

A project is in the works. A teacher from the municipality of Mamer had long harboured the idea of creating a "Bëschschoul". After a long preparation phase, with the support of the school committee and the teacher specialising in school development, we are pleased to announce the launch of the "Bëschschoul" project at the Drëps. It is important to stress that without the financial support of the municipality of Mamer, and the enthusiasm of the College of Aldermen from the outset, this project would

not have been possible. Initially, the "Bëschschoul" project will be implemented for the Mamer primary school. It should also be remembered that the Vivarium, which is now well known beyond our municipality, was originally a similar project, which over the years has evolved into an integral part of our pupils' school life.



With the start of the new school year, we are delighted to announce the opening of our new swimming pool. Our swimming instructor, Romain Klein, has devoted a great deal of time and effort to this project, and his team was expanded in July. The final preparations are now complete, and swimming lessons for all the classes in our community have been included in the timetable. We can't wait to see our pupils having swimming lessons in our pool on the Kinneksbond campus. Having a swimming pool in the community means that pupils can go swimming every week. This weekly regularity ensures that they learn to swim more quickly and perfect their technique. We would like to express our gratitude to the municipality for having implemented this long-awaited project, thereby ensuring that almost 900 pupils will be able to learn to swim.

In addition to the School Development Plan, the Bëschschoul, the school swimming pool and other projects, excursions and school trips, it is important for us to emphasise our teaching staff. Teachers make schools what they are, their energy is the catalyst for motivating pupils to learn, their commitment is what keeps pupils coming to school with enthusiasm, their patience and caring form the structure on which pupils can support their academic

progress, their creativity means they can constantly reinvent themselves, making lessons exciting and motivating, and their empathy creates a bond between teacher and pupil, making the teacher a very important reference person in a child's development.

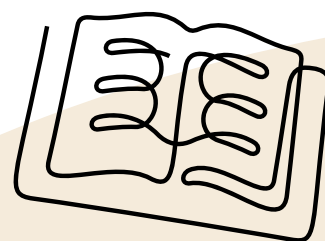
We would like to express our deepest gratitude to all our partners within the school. Our two School Committees play an essential role, always listening to us and ready to support us in all circumstances. We would also like to thank our colleagues, teachers, educators, trainee teachers and lecturers, who help to create a dynamic school where children enjoy learning.

A special thank you to the municipality of Mamer, which has been an invaluable partner. Their logistical and financial support has made it possible for us to maintain and improve the school infrastructure, organise meaningful extra-curricular activities and guarantee a safe and welcoming environment for all pupils. Their ongoing commitment and their close cooperation with the school are key to ensuring a high quality and flourishing school life.

Wishing you a great start to the 2024-2025 school year.



Maryse BADEN and Bob FEYEREISEN
Presidents of the school committees of Capellen and Mamer primary schools

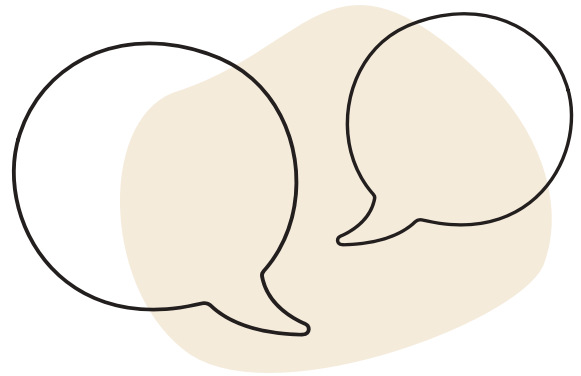


VADE-MECUM FOR SUCCESSFUL COMMUNICATION BETWEEN PARENTS AND TEACHERS

If you have any questions, comments, problems or concerns about your child:

Meetings and interviews with parents

- Information meeting: at the beginning of the school year
- Individual and mandatory interview to submit the interim balance sheets at the end of each term
- Individual interviews: by appointment



Unauthorised persons are prohibited from entering the school buildings.

Contact the teacher or educational team
(firstname.lastname@mamerschoulen.lu)



The meeting was unsatisfactory?



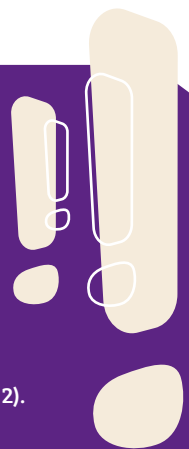
Contact the School Committee via the School Chairman



Contact the regional education directorate (region 2).



The meeting was unsatisfactory?



GENERAL INFORMATION ABOUT SCHOOLS IN THE MUNICIPALITY

School service

General information about schools in the Municipality of Mamer:

School service

E-mail : servicescolaire@mamer.lu
 1, Place de l'indépendance
 L-8252 Mamer
 Postal address:
 B.P. 50 L-8201 Mamer
 Opening hours:
 Mon-Fri 8h00-11h30/13h30-16h30
www.mamer.lu

Kim LEIDI

E-mail : kim.leidi@mamer.lu
 Tel. : 310031-44
 Enrolments, exemption requests, school transport

Isabelle KOLLWELTER

E-mail : isabelle.kollwelter@mamer.lu
 Tel.: 310031-44
 Enrolments, exemption requests, school transport

Marc BRAUN

E-mail : marc.braun@mamerschoulen.lu
 Tel. : 26395-600
 Mamer Primary School secretariat, accompanying staff, school transport

Marie-Thérèse WAGNER

E-mail : marie-therese.wagner@mamerschoulen.lu
 Tel. : 26395-1701
 Secrétariat EF Capellen

Tom PLUNE

E-mail : tom.plune@mamer.lu
 Tél. : 310031-51
 Head of Department, General Affairs

School Committee

(composition at the time of writing)



Nadine SCHMID
President

President: Nadine SCHMID

Members: Maria ANISSOVETS, Maryse BADEN, Djuna BERNARD, Natalie DARNÉ, Bob FEYEREISEN, Simone FRANK, Céline HANSEL-MERTES, Jessica KLOPP, Pierre MATGÉ, Raoul METTENHOVEN, Didier PICARD, Martine POORTERS, Gilles REGENER, Nadine REINESCH, Pascale TAPELLA



Marc BRAUN,
Secretary Mamer



Marie-Thérèse WAGNER,
Secretary Capellen

Cycle 1	Monday	Tuesday	Wednesday	Thursday	Friday
7h55 - 11h40					
14h00 - 16h00					
Cycle 2-4	Monday	Tuesday	Wednesday	Thursday	Friday
7h55 - 12h05					
14h00 - 16h00					

For everyone's sake, it is important to be at school on time. Late arrivals disrupt the smooth running of the class. Late arrivals are to be considered as unjustified absences and will be noted in pupils' report.

ASSISTANCE AND SOCIAL SERVICES

Welcome classes for new arrivals

Children who have just arrived in Luxembourg, and who have mastered none or only one of the three languages of primary education, receive support from the people in charge of dispensing reception courses.

These children are enrolled in an ordinary class and receive language lessons as part of the reception courses during normal school hours.

Specially trained teachers accompany the children for a period ranging from a few months to several years. Their language courses are based on an interactive approach.

The aim is to enable children to find their bearings in their new environment, to communicate in the new language and to learn it well enough to be able to follow normal lessons in their ordinary class. During the transition phase, the host teachers provide occasional support to help the children integrate fully into their class.

Mamer : Tanja BREDEN, Sylvie ELCHEROTH,
Roy REGENWETTER
Capellen : Nadine MAY, Roy REGENWETTER

Special needs team

In everyday school life, our students are often faced with challenges that seem insurmountable. These difficulties can be academic, emotional or social, and should ideally be resolved as quickly as possible. Students need to be supported in this process. Pedagogues and specialist teachers at the schools in Mamer and Capellen therefore work closely together. The main aim is to find, plan and implement solutions together, bearing in mind that there are different methods to suit each child. An open and honest exchange between the teacher, children, parents and other school partners is fundamental to achieving positive and productive work.



Reception (Mamer)

Tanja BREDEN, Sylvie ELCHEROTH



Reception

Nadine MAY (Capellen), Roy REGENWETTER (Mamer & Capellen)



Team EBS

Sylvie ELCHEROTH, Gilles GLESENER, Marcelle MARX, Julie BOVÉ,
Bob FEYEREISEN, Véronique WELTER, Danièle REUTER

Missing on the photo: Silvia RODRIGUEZ



Team EBS

Mireille FANDEL (Capellen)

The special needs support team consists of the following members:

Véronique WELTER, Silvia RODRIGUEZ,
Mireille FANDEL, Marcelle MARX, Julie BOVÉ,
Bob FEYEREISEN, Sylvie ELCHEROTH et
Gilles GLESENER, Danièle REUTER

Members of the ESEB team's classroom support team at Mamer Primary School are:

Bob ERPELDING, Kim LANG,
Magaly CORTES, Corinne FRANK

Special Needs Support Team (ESEB) - "Oppent Ouer"

Area Manager: BETTINELLI David
Assistant directors: KASS Jacques,
LEMMER Nadine
Regional management contact:
Tel: 247-55110
Email: secretariat.mamer@men.lu

Support Team for students with special needs (ESEB):

Tel. : 247-55105
Email : ci.mamer@men.lu

Adress :

Direction de l'enseignement fondamental- Région 2
2-4, parc d'activités Capellen (Bât. C)
L-8308 CAPELLEN

Municipal subsidy

Since August 2016, the commune of Mamer has provided a subsidy covering 50% of the costs (up to a maximum of €150 per child/school year) associated with the Home Care Service for sick children. For more information and to obtain the required form, go to www.mamer.lu. Sick children must stay at home and cannot be sent to school or to the Maison Relais.

SCHOOL LIBRARIES

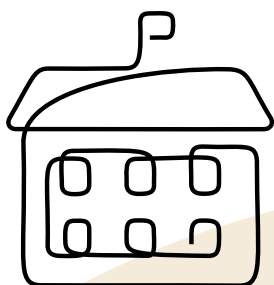
The "Kinneksbond" school campus in Mamer and the Capellen school campus each have a school library. Students from both schools can borrow books from either library. There are over 11,000 books, including 600 audio books. All books are catalogued in a computerized system. The range includes book collections and themed books for children in Cycles 2 to 4, as well as books for Cycle 1 children aged 3 to 6. In addition to illustrated books in

German, there are also books in French, Portuguese and English, so that parents can read stories to their children in their mother tongue. Students, parents and teachers can browse the library catalogue at www.mamerschoulen.lu. As parents play a key role in helping their children to learn to read, the Mamer library is also open outside school hours to pupils from the Mamer and Capellen schools.

Mamer Library

You can
borrow
books at
both
locations

Capellen Library



Mamer library

Librarian:

Tom CARIER

E-mail: tom.carier@mamerschoulen.lu

Tel. : 26 395-622

Opening hours:

Wednesday: 4.00 pm to 5.00 pm

Saturday : 1.45 pm to 4.15 pm

Open some Saturdays from 1.45pm to 4.15pm before and during school vacations:

Christmas vacation : 21 December 2024

Easter vacation : 5 April 2025

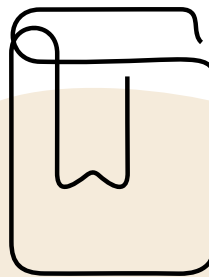
Summer vacation 2025 : 12 July (borrow books) and 13 September 2025 (return of books)

As such, all pupils (except those in Cycles 4.2) can borrow books during the school summer vacation.



Library

Tom CARIER



Capellen library

Librarians:

Christine SCHMIT, Lauréanne KURT

E-mail: christine.schmit@mamerschoulen.lu ;

laureanne.kurt@mamerschoulen.lu

Tel. : 26 395-708

The library is closed outside school hours and during school vacations, but Capellen pupils can borrow books from the Mamer library.



Library

Christine SCHMIT, Lauréanne KURT

VIVARIUM

Our Vivarium team welcomes all the classes in the commune of Mamer (Early Ed through Cycle 4) once a term to offer them activities on certain animals (exotic and/or native). This work not only broadens our knowledge and understanding of our environment, but also generates enthusiasm and a desire to respect and protect all species.

We also offer scientific topics, as well as practical work and challenges, which encourage scientific thinking, documentation and reflection.



*Vivarium
Pierre BERTINCHAMPS, Laurent
LEPAGE, Gast WEYDERT*

Pierre BERTINCHAMPS :
pierre.bertinchamps@mamerschoulen.lu

Laurent LEPAGE :
laurent.lepage@mamerschoulen.lu

Gast WEYDERT :
gast.weydert@mamerschoulen.lu



Further information at www.mamerschoulen.lu and on facebook.com/vivariummamer

PHYSICAL EDUCATION AND SWIMMING COURSES

E.P classes take place in the sports hall of the schools in Mamer/Capellen.

Swimming lessons are held at the new swimming center on Campus Kinneksbond Mamer.

It is mandatory for the children to bring all their gear in order to actively participate in the lessons.

If, for health reasons, a student cannot participate, we ask you to inform either the teacher or the person in charge of the class with a justified excuse by e-mail or

letter. In accordance with the ministerial instructions in the "plan d'études" (curriculum), the student must nevertheless attend these lessons, and pay close attention to the teacher's explanations.

The email addresses of the sports teachers and class teachers are composed of **firstname.lastname@mamerschoulen.lu**.

Physical education and swimming lessons at Capellen primary school are provided by the teachers of the cycles.



Lifeguards

Sandra BARONE, Romain KLEIN,
Jessica NAU



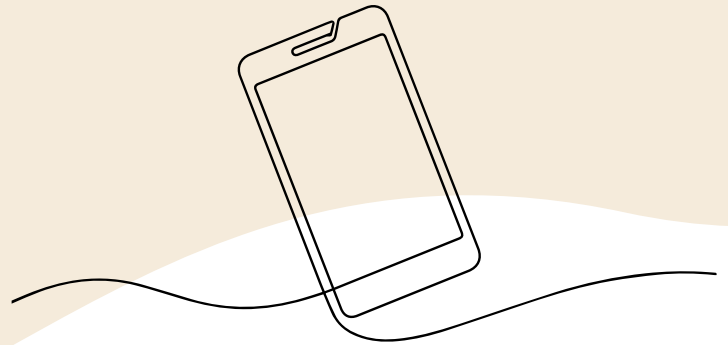
Physical education
Luc OLINGER, Pascale TAPPELLA (Mamer)



SMARTPHONE & SMARTWATCH

Mobile phones and smartwatches have no place in the school. Students are responsible for their use. Mobile phones must be switched off and kept in the school bag.

Teaching staff have the right to remove the device and switch it off where students fail to comply with this rule. The school declines all responsibility in the event of theft or loss of an electronic device. These rules apply in the school buildings, on school transport, in the Maisons Relais and during excursions.



OUR SCHOOL RULES

Rules are drawn up by teachers, parents' representatives and Maison Relais transition centre managers.

General rules for parents

- We make sure that our child adheres to school schedules
- When children are ill, we will inform the teaching staff before 9.00 a.m. at the latest
- We teach our child respect for others and basic rules of good behaviour
- We support our children with their school work and sustain a favourable environment for learning at home
- We ensure that our child has all the school materials necessary for lessons to run smoothly
- We check homework and materials
- We value learning and school
- We listen to our teachers and support them in their-teaching approach
- We agree to the school's disciplinary rules and sanctions that are imposed in case of failure to comply with rules
- We ensure that our child has a healthy snack

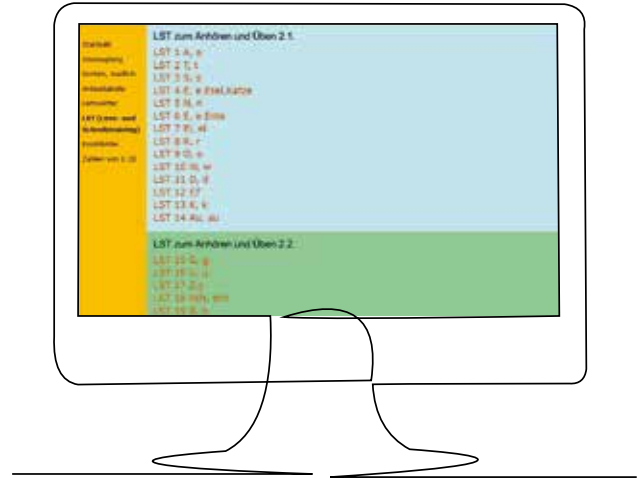
General rules for children

- I am on time for the start of lessons; (start times: 7.55 am and 2.00 pm)
- I obey the instructions of the instructors and teachers
- I will not sully the school buildings, the playground or the bus
- I will not do anything intentionally harmful
- I do not damage anything
- I bring healthy snacks and drinks
- I put my schoolbag away and take care with my clothes
- I leave electronic devices and all dangerous objects at home
- I am calm, I walk slowly, I do not play with a ball in school buildings or on the bus
- I do not play indoors without permission or supervision

INTERNET & SOCIAL MEDIA

The schools in Mamer regularly update their website www.mamerschoulen.lu to showcase the day-to-day school life of their pupils.

You can find lots of information to help you understand our life at school. The Mamer basic school regularly presents and documents its pupils' activities on Instagram to provide a little insight into our activities at school (mamerschoul).



The cycle 2 team has put the basic reading and writing vocabulary (Lese- und Schreibwortschatz (LST)) online on their class pages. Pupils and parents can read and listen to the words they need to learn to improve their German vocabulary, practise pronunciation and have fun repeating little phrases linked to their German lessons.



Youtube Channel

On our Youtube "Mammerschoul" channel, students will find an ever-growing collection of short learning videos that make it easier for them to access new topics or refresh their memory while learning. At the moment, you'll find mainly cycle 4 learning videos, but as new videos are added regularly, it's worth subscribing or checking the site regularly.

THE LUXEMBOURG SCHOOL SYSTEM

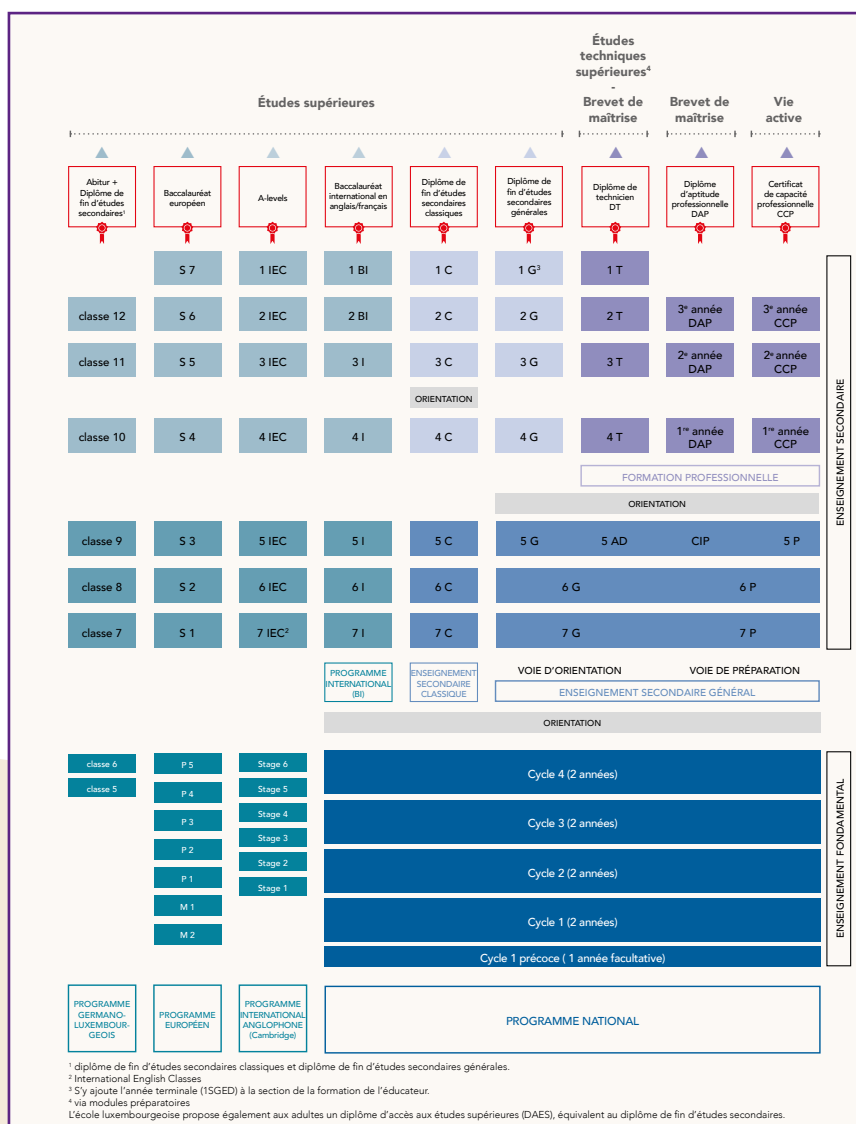
In the Grand Duchy of Luxembourg, basic education is provided by state, private or international schools. The state primary school accepts children aged 3 to 12. All children living in Luxembourg who have reached the age of 4 by 1 September must attend primary school.

Early years

Cycle 1 includes an optional first year: early childhood education (3 to 4 years). This enables children to make playful contact with other children. All children who have reached the age of three by 1 September 2024 are eligible for admission. Enrolment is free and children must attend for a minimum of three half-days a week (including at least one afternoon).

The municipality of Mamer will organise a second wave of early education pupils after the Christmas break for children who will have reached the age of three between 01.09.2024 and 31.12.2024.

Enrolment of these children is subject to the availability of places. In accordance with ministerial regulations, school transport is not provided by the municipality for early education.



Cycle 1.1 & 1.2

After early education comes pre-school education, which is compulsory for all children who have reached the age of 4 by 1 September 2024.

This 2-year cycle aims to teach the Luxembourgish language, communication and social skills, as well as introducing children to mathematics and developing their writing skills.

Cycles 2, 3 & 4

(6 to 12 years). These correspond to primary education. For six years, the emphasis is on literacy, learning the German, French and Luxembourgish languages, mathematics, learning about the sciences, particularly the humanities and natural sciences, physical expression, psychomotor skills, sport and health, and learning about aesthetics and culture, including the arts and music. Primary school adapts methods and content to the needs of each pupil, and develops a skills-based approach. 6 Fundamental education in Luxembourg is organised into fifteen regional directorates. Region 2 includes the municipalities of Bertrange, Mamer, Strassen, Kopstal, Kehlen, Koerich and Steinfort.

Regional Director :

BETTINELLI David

Deputy Directors :

KASS Jacques, LEMMER Nadine

Regional management contact :

Tel. : 247-55110

Email : secretariat.mamer@men.lu

Today, as in the past, we learn to read, write and count at school. But learning these skills is no longer an end in itself, but a means to an end, a foundation for further learning. This is why we have defined the necessary skills that every child must acquire at the end of the various stages of their school career. These **core skills are determined by the Luxembourg curriculum**, and enable pupils to move on to the next level and obtain a qualification that matches their abilities and interests.

Parents are essential partners of the school, and are directly informed of their child's assessment and progress in relation to the objectives to be achieved: at the end of each term, parents are invited to a personal interview. General

Directions de l'enseignement fondamental au Luxembourg 2022



- | | | | | |
|-------------------------------|---------------------------------|--------------------------------|-----------------------------------|-------------------------------|
| 1 Direction LUXEMBOURG (dr 1) | 4 Direction DIFFERDANGE (dr 4) | 7 Direction DUDELANGE (dr 7) | 10 Direction GREVENMÄCHER (dr 10) | 13 Direction REDANGE (dr 13) |
| 2 Direction MAMER (dr 2) | 5 Direction SANEM (dr 5) | 8 Direction BETTEMBOURG (dr 8) | 11 Direction ECHTERNACH (dr 11) | 14 Direction DIEBICHH (dr 14) |
| 3 Direction PÉTANGE (dr 3) | 6 Direction ESCH/ALZETTE (dr 6) | 9 Direction REMICH (dr 9) | 12 Direction MERSCH (dr 12) | 15 Direction WILTZ (dr 15) |

LES BRANCHES			
Cycle 1	Cycle 2	Cycle 3	Cycle 4
Raisonnement logique - mathématiques	Mathématiques	Mathématiques	Mathématiques
Langage, langue luxembourgeoise et ouverture aux langues	Alphabétisation et langues	Langues	Langues
Découverte du monde par tous les sens	Éveil aux sciences	Éveil aux sciences	Sciences
Psycho-motricité, expression corporelle et santé	Corps, motricité et santé	Sports et santé	Sports et santé
Expression créative, éveil à l'esthétique et à la culture	Expression créative, éveil à l'esthétique et à la culture	Arts et musique	Arts et musique
Vie en commun et valeurs	Vie en commun et valeurs	Vie en commun et valeurs	Vie en commun et valeurs



FUNDA- MENTAL SCHOOL MAMER





GENERAL INFORMATION



Kinneksbond Mamer school campus (cycle 1)

12, Um Kinneksbond
L-8210 Mamer
Tel. : 26 395 600
E-mail : president.mamer@mamerschoulen.lu
www.mamerschoulen.lu

Kinneksbond Mamer school campus (cycles 2-4)

18, Um Kinneksbond
L-8210 Mamer
Tel. : 26 395 600
E-mail : president.mamer@mamerschoulen.lu
www.mamerschoulen.lu

School Committee

President :
Bob FEYEREISEN
E-mail : bob.feyereisen@mamerschoulen.lu
Tel. : 691 32 35 16

Deputy President :
Natalie DARNÉ
E-mail : natalie.darne@mamerschoulen.lu
Tel. : 691 32 35 12

Pascale TAPELLA
E-mail : pascale.tapella@mamerschoulen.lu
Tel. : 691 32 35 15

Members:
Mike STILETTO, Stéphanie SCHMIT,
Gast WEYDERT; Gilles BRAAS

Cycle coordinators

Preschool : Nancy BRAUN
E-mail : cycle1precoce.mamer@mamerschoulen.lu

Primary School : Michèle FELLER
E-mail : cycle1prescolaire.mamer@mamerschoulen

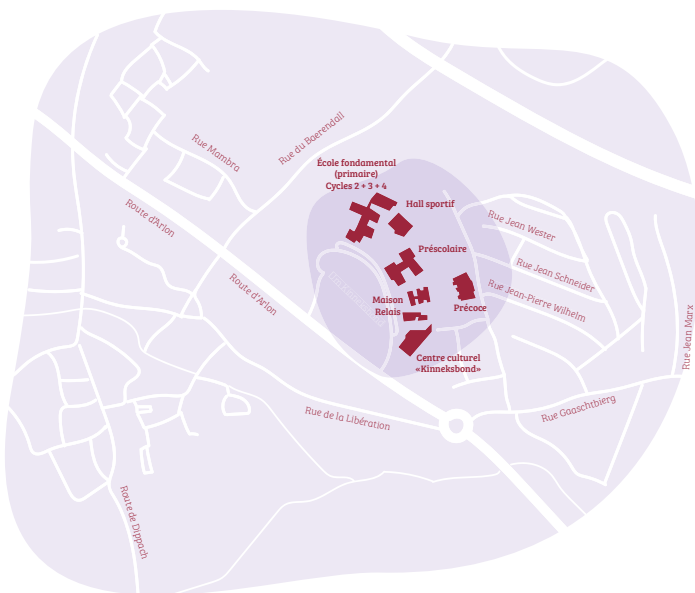
Cycle 2 : Anouk SIMON
E-mail : anouk.simon@mamerschoulen.lu

Cycle 3 : Gilles BRAAS
E-mail : gilles.braas@mamerschoulen.lu

Cycle 4 : Bianca GLODT
E-mail : bianca.glodt@mamerschoulen.lu

Caretakers

Pascal MULLER • Tél. : 691 31 35 45
Dominique GIANNOTTE • Tél. : 621 82 32 46
E-mail : concierge-mamer@mamerschoulen.lu

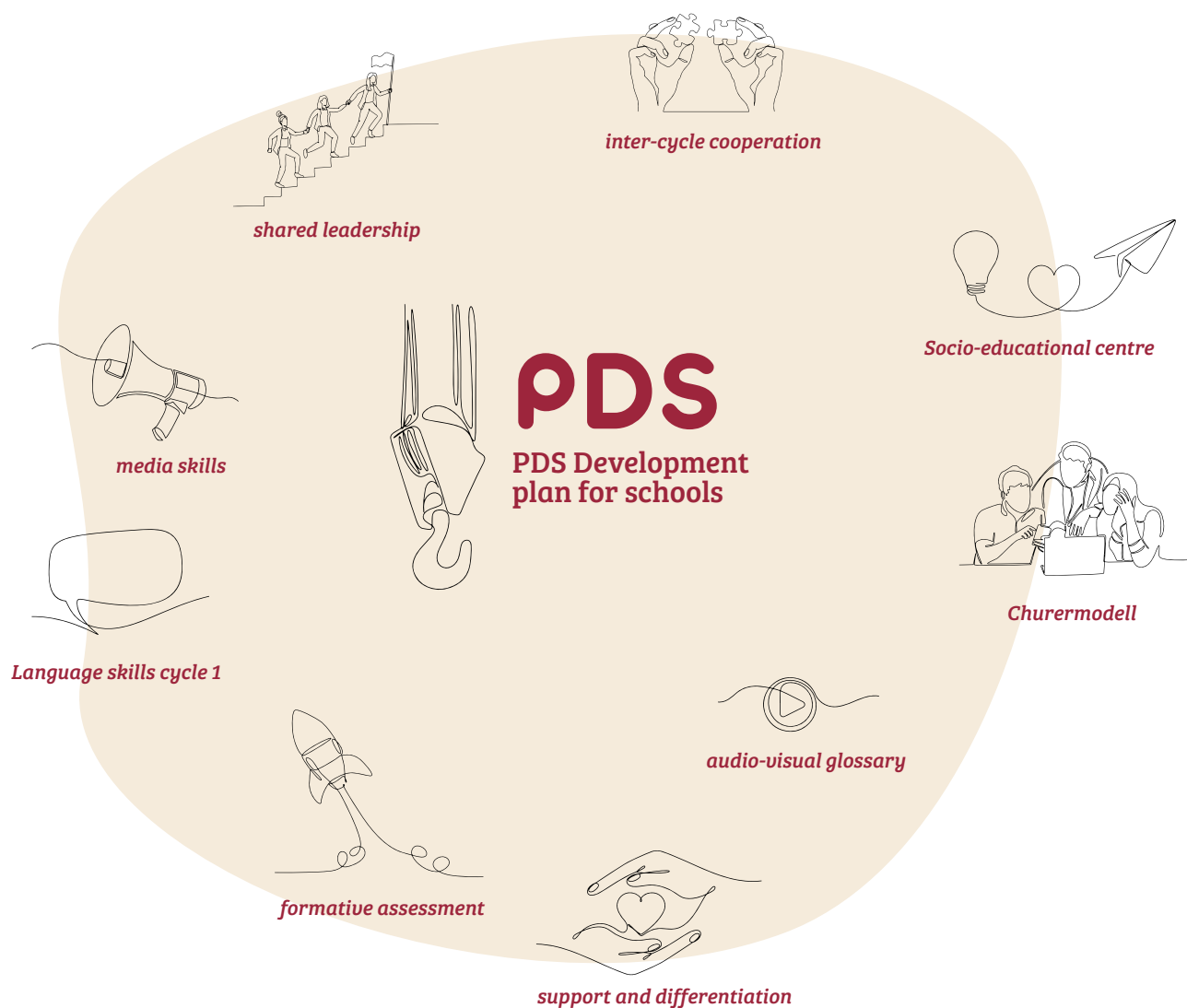


Mamer School Committee:
Bob FEYEREISEN, Mike STILETTO,
Stéphanie SCHMIT, Gast WEYDERT, Gilles
BRAAS, Pascale TAPELLA, Natalie DARNÉ

SCHOOL DEVELOPMENT PLAN

The multiple areas of development initiated by the latest PDS2 school development plan have led to the establishment of professional learning communities within the teaching staff. Dynamic development, driven by peer-to-peer learning under the guidance of college-based experts – known as teacher-leaders – is planned for the next three years as part of the PDS3 school development plan. This development aims to increase the effectiveness of networking between teaching teams and the individual skills of teachers in the various areas of development.

In September 2024, an internal school boost day will be organised, led by Professor Dr Wolfgang Schnell. The aim of this day is to make people aware of the shared values and skills of the teaching staff at Mamer Primary School, and to activate them. The purpose of this is to use it as a basis to formulate a coherent vision for our educational community, which will be adhered to and implemented by all school partners.



TEACHING STAFF

The e-mail addresses of class teachers are as follows: firstname.lastname@mamerschoulen.lu

Class name	Teachers	Educators	E-Mail	Telephone
MPcA	MORBY Anouk	DOMINGOS Céline	precoceA.mamer@mamerschoulen.lu	26 395 - 303
MPcB	ESCHETTE Anne-Marie	DAUPHIN Sandy	precoceB.mamer@mamerschoulen.lu	26 395 - 308
MPcC	BRAUN Nancy	WULFF Christian	precoceC.mamer@mamerschoulen.lu	26 395 - 307
MPcD	WEIS Pamela	KREMER Claudine	precoceD.mamer@mamerschoulen.lu	26 395 - 305



Cycle **1** Pre-school

Cycle 1 Pre-school:

1st row: Claudine KREMER, Pamela WEIS, Françoise WELTER

2nd row : Anouk MORBY, Nancy BRAUN, Christian WULFF, Anne-Marie ESCHETTE

Cycle **1** Pre-school

Class name	Teachers	E-Mail	Telephone
MPsA	DARNÉ Natalie	m1darne@mamerschoulen.lu	26 395 - 406
MPsB	COLLÉ Liette	m1colle@mamerschoulen.lu	26 395 - 405
MPsC	FELLER Michèle	m1feller@mamerschoulen.lu	26 395 - 404
MPsD	ZEIEN Taiga	m1zeien@mamerschoulen.lu	26 395 - 407
MPsE	PERL Michèle	m1perl@mamerschoulen.lu	26 395 - 402
MPsF	LEHNERS Audrey	m1lehners@mamerschoulen.lu	26 395 - 405
MPsG	PEZZOLI Cristina	m1pezzoli@mamerschoulen.lu	26 395 - 409
MPsH	DA SILVA PINTO Célia	m1dasilvapinto@mamerschoulen.lu	26 395 - 408

Cycle 1

Audrey LEHNERS,
Laurence CHERRY,
Michèle FELLER,
Michèle PERL,
Natalie DARNÉ,
Corinne FRANCK,
Magaly CORTES,
Celia DA SILVA PINTO,
Cristina PEZZOLI,
Taiga ZEIEN,
Liette COLLÉ



Other teaching duties in cycles 1

CHERRY Laurence	laurence.cherry@mamerschoulen.lu
WEIS Pamela	pamela.weis@mamerschoulen.lu
RODRIGUES RIBEIRO Katia	katia.rodrigues@mamerschoulen.lu
STEINES Manon	manon.steines@mamerschoulen.lu
WELTER Françoise	francoise.welter@mamerschoulen.lu

Cycle 2

Class name	Teachers	E-Mail	Telephone
M2.1A	CARIER Tom	m2carier@mamerschoulen.lu	26 395 - 612
M2.1B	FELLER Carole	m2feller@mamerschoulen.lu	26 395 - 616
M2.1C	SIMON Anouk / BRUCHER Anne	m2simon@mamerschoulen.lu	26 395 - 614
M2.2A	SCHMIT Stéphanie / COLLÉ Corinne	m2schmit@mamerschoulen.lu	26 395 - 608
M2.2B	JUNGBLUTH Eric	m2jungbluth@mamerschoulen.lu	26 395 - 606
M2.2C	RASIC Frank	m2rasic@mamerschoulen.lu	26 395 - 609
M2.2D	ERPELDING Jessica	m2erpelding@mamerschoulen.lu	26 395 - 611

Cycle 2

1st row: Carole FELLER, Corinne COLLÉ,
Anouk SIMON, Stéphanie SCHMIT

2nd row: Jessica ERPELDING,
Emmanuelle SEIWERATH, Eric JUNGBLUTH,
Frank RASIC, Tom CARIER, Anne BRUCHER



TEACHING STAFF

Cycle 3

Class name	Teachers	E-Mail	Telephone
M3.1A	LEPAGE Laurent / LOURY Alexandre	m3lepage@mamerschoulen.lu	26 395 - 631
M3.1B	BOUR Christian	m3bour@mamerschoulen.lu	26 395 - 629
M3.1C	BRAAS Gilles	m3braas@mamerschoulen.lu	26 395 - 632
M3.1D	MEIS Marthe	m3meis@mamerschoulen.lu	26 395 - 633
M3.2A	SERVAIS Daisy	m3servais@mamerschoulen.lu	26 395 - 625
M3.2B	CASOLI Daniel	m3casoli@mamerschoulen.lu	26 395 - 626
M3.2C	DZIADEK Anja	m3dziadek@mamerschoulen.lu	26 395 - 628
M3.2D	MEYER Cathy / WAGNER Lynn	m3meyer@mamerschoulen.lu	26 395 - 623



Cycle 3

Lynn WAGNER, Daisy SERVAIS, Cathy MEYER, Anja DZIADEK, Alex LOURY, Dan CASOLI, Marthe MEIS, Gilles BRAAS, Christian BOUR, Laurent LEPAGE
Missing on the photo: : Martine BOUCHE

Class name	Teachers	E-Mail	Telephone
M4.1A	BERTINCHAMPS Pierre / GREIVELDINGER Claude	m4bertinchamps@mamerschoulen.lu	26 395 - 663
M4.1B	GLODT Bianca	m4glodt@mamerschoulen.lu	26 395 - 658
M4.1C	KAUTH Carole	m4kauth@mamerschoulen.lu	26 395 - 665
M4.1D	FABER Joy	m4faber@mamerschoulen.lu	26 395 - 660
M4.2A	WEYDERT Gast / SERVAIS Jeff	m4weydert@mamerschoulen.lu	26 395 - 661
M4.2B	DECKER Julie	m4decker@mamerschoulen.lu	26 395 - 648
M4.2C	SAYED Amira / FRATONI Nathalie	m4sayed@mamerschoulen.lu	26 395 - 653
M4.2D	STILETTO Mike	m4stiletto@mamerschoulen.lu	26 395 - 656
M4.2E	CHERET Aurélie	m4cheret@mamerschoulen.lu	26 395 - 650

Cycle 4

Cycle 4

1st row: Aurélie CHERET, Bianca GLODT,
Carole KAUTH, Pierre BERTINCHAMPS,
Gast WEYDERT, Bob FEYEREISEN

2nd row: Joy FABER, Amira SAYED,
Nathalie FRATONI, Mike STILETTO,
Claude GREIVELDINGER, Jeff SERVAIS



IBES

BOVÉ Julie
julie.bove@mamerschoulen.lu
26 395 - 651

Reception of newcomers

BREDEN Tanja
tanja.breden@mamerschoulen.lu
26 395 - 647

REGENWETTER Roy
roy.regenwetter@mamerschoulen.lu
26 395 - 647

ELCHEROTH Sylvie
sylvie.elcheroth@mamerschoulen.lu
26 395 - 647

Physical Education

TAPPELLA Pascale
pascale.tapella@mamerschoulen.lu
26 395 - 501

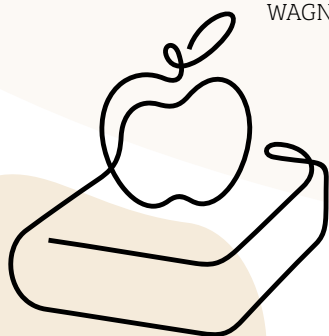
OLINGER Luc
luc.olinger@mamerschoulen.lu
26 395 - 501

Other teaching duties in cycles 2 to 4

ARAYA Nathalie
BERNARD Kim
BOUCHÉ Martine
BRUCHER Anne
DE SA FERNANDES Marlène
DEMUTH Anna
DOLISY Joé
ELCHEROTH Sylvie
FEYEREISEN Bob
FRATONI Nathalie
GLESNER Gilles
MARX Marcelle
REUTER Danièle
REGENWETTER Roy
SERVAIS Jeff
SEIWERATH Emmanuelle
WAGNER Lynn

E-Mail

nathalie.araya@mamerschoulen.lu
kim.bernard@mamerschoulen.lu
martine.bouche@mamerschoulen.lu
anne.brucher@mamerschoulen.lu
marlene.desafernandes@mamerschoulen.lu
anna.demuth@mamerschoulen.lu
joe.dolisy@mamerschoulen.lu
sylvie.elcheroth@mamerschoulen.lu
bob.feyereisen@mamerschoulen.lu
nathalie.fratoni@mamerschoulen.lu
gilles.glesener@mamerschoulen.lu
marx.marcelle@mamerschoulen.lu
daniele.reuter@mamerschoulen.lu
roy.regenwetter@mamerschoulen.lu
jeff.servais@mamerschoulen.lu
emmanuelle.seiwerath@mamerschoulen.lu
lynn.wagner@mamerschoulen.lu



SCHOOL TRANSPORT AND PÉDIBUS

School transport

- School transport is exclusively for children attending pre-school or primary education.
- To use school transport, you must first register with the local education department.

Pédibus

- The Pédibus is a system whereby children are accompanied to school on foot by escorts hired by the local authority. The children wait for the Pédibus

at the agreed meeting point (stop) and walk with escorts to school. The "Schoulwee" logo is visible on the ground and the Pédibus logo is displayed at the bus stops.

School bus

- Our school buses take pupils to and from school at set times. The different routes are represented by pictures of animals. This avoids confusion around bus stops and the risk of getting on the wrong bus. All buses have an adult escort who rides along.



BUS MAMER 1



BUS MAMER 2



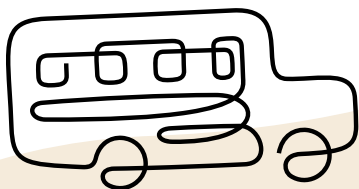
BUS MAMER 3



BUS MAMER 4



BUS MAMER 5



MAMER Bus



MAMER 1 :
Marie VALERO
WEIBEL-MÜLLER



MAMER 2 :
Malou KREMER-KLEIN



MAMER 3 :
Astrid KRAUSE



MAMER 4 :
Gisèle COLLING



MAMER 5 :
Donatella MONACO

Pédibus MAMER



Céline SCHMIDT



Laura PASQUARELLI



Eleonora ALVANO



Alessandra LAROSA



Mônica DIAS CASTANAL



Tina PRUMBAUM



Chris WULFF



Claudine KREMER



Aurélie BOISSON



Sandy DAUPHIN



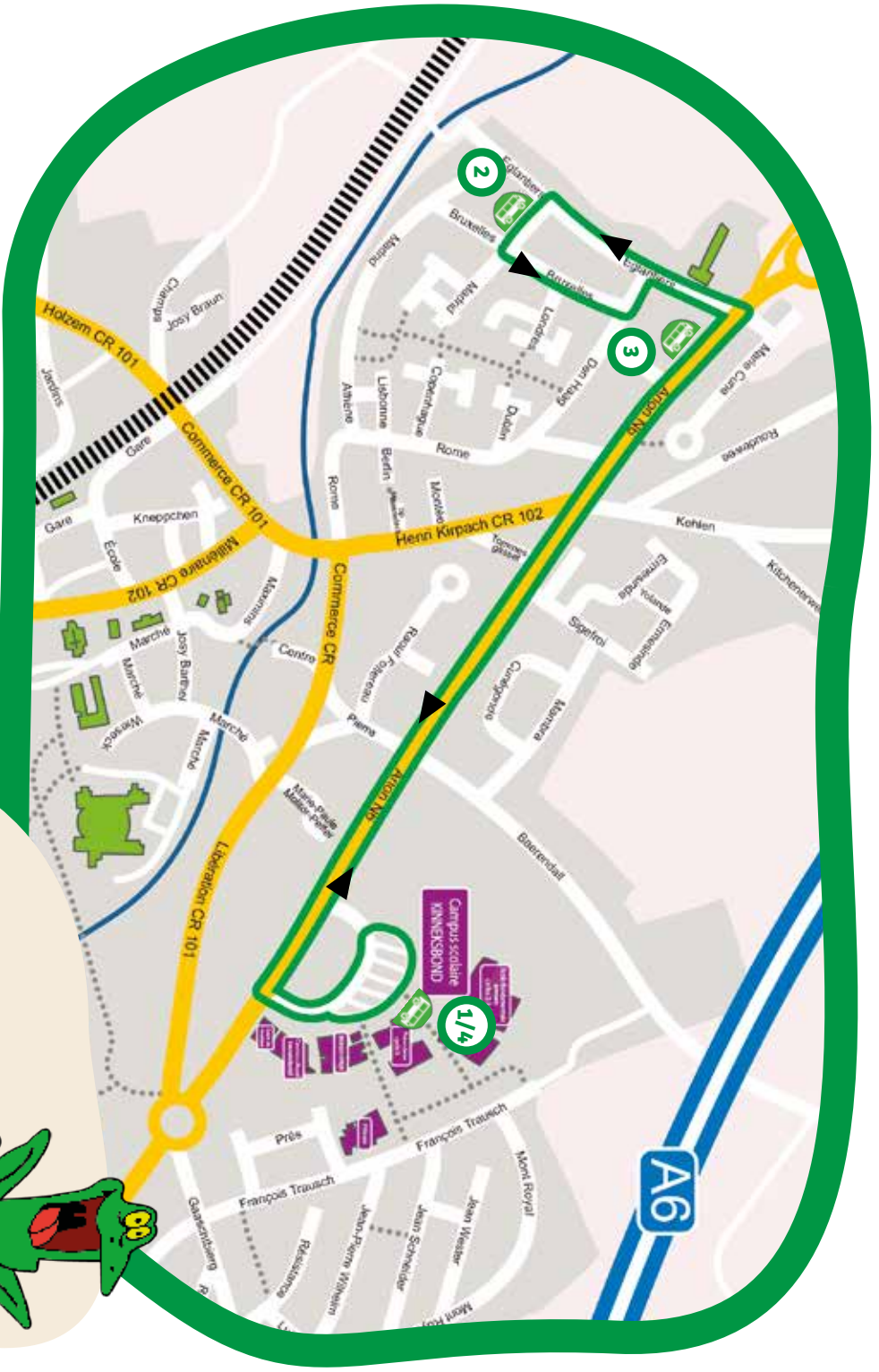
Jessica DUNKEL



Céline GRÜNER



Céline DOMINGOS
NASCIMENTO



— bus route  bus stop

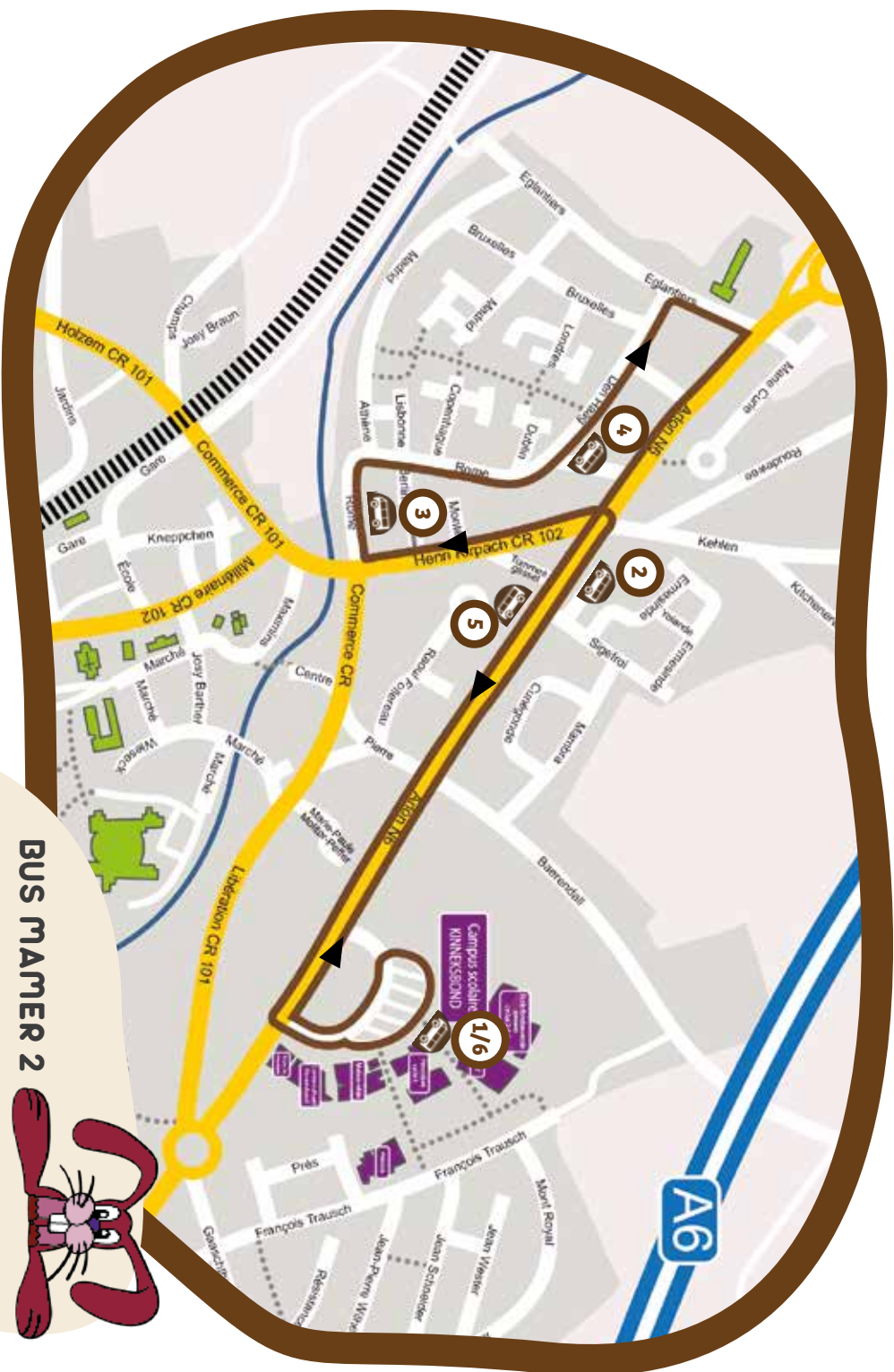
BUS MAMMER 1

SCHOOL YEAR 2024 - 2025

BUS MAMMER 1

Bus stop	Mondays / Wednesdays / Fridays		Tuesdays / Thursdays	
	Outward journey	Return	Outward journey	Return
1	07h40	12h12	16h07	12h12
2	07h40	13h42	16h13	12h18
3	07h43	13h45	16h16	12h21
4	07h47	13h49	07h47	





— bus route  bus stop

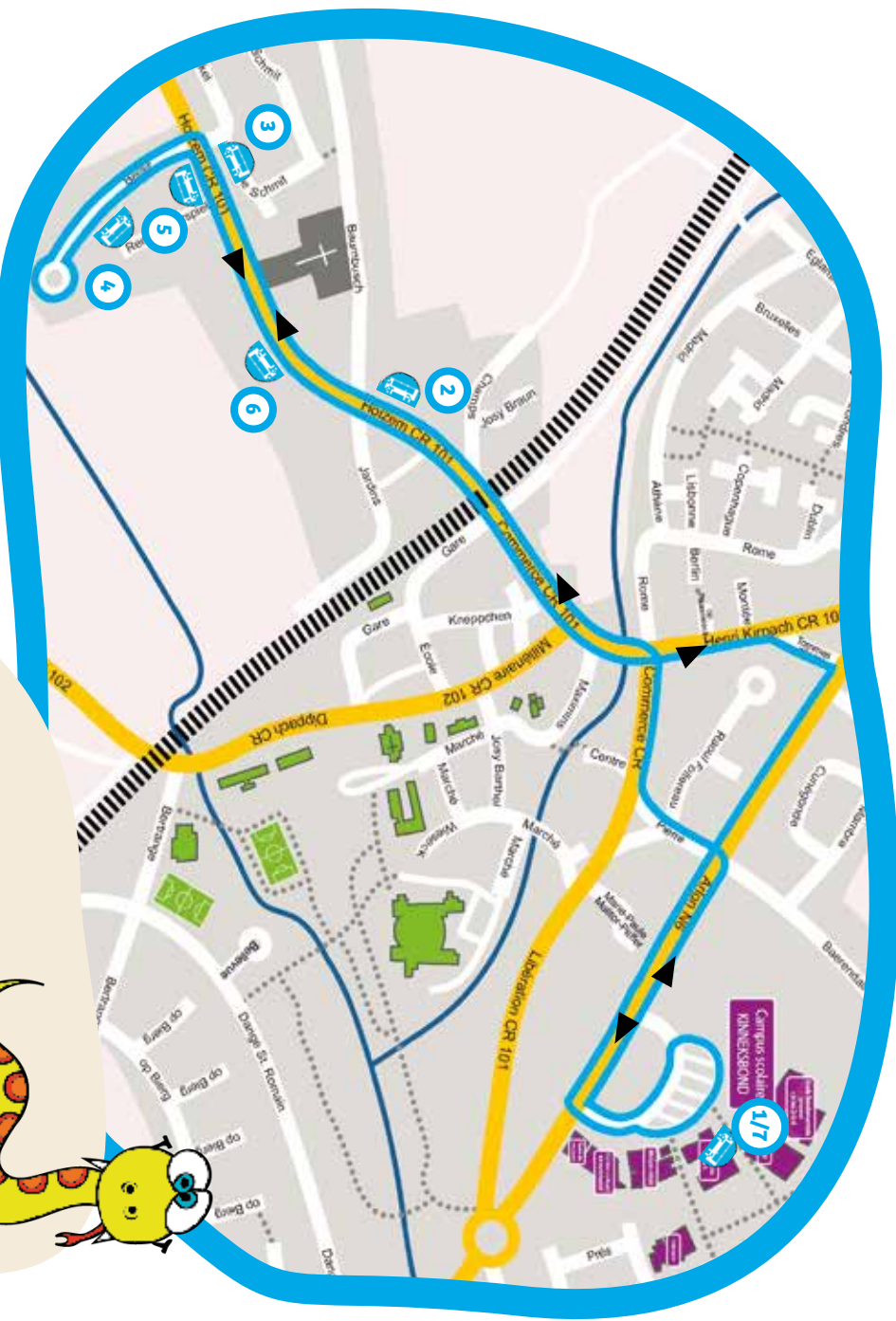
BUS MAMER 2

SCHOOL YEAR 2024 - 2025

BUS MAMER 2



Bus stop	Mondays / Wednesdays / Fridays		Tuesdays / Thursdays	
	Outward Journey	Return	Outward Journey	Return
1		12h12	16h07	12h12
2	07h35	13h38	12h15	16h10
3	07h37	13h40	12h18	16h13
4	07h40	13h43	12h20	16h15
5	07h44	13h47	12h24	16h19
6	07h46	13h49		07h46



— bus route



bus stop

BUS MAMER 3

Bus stop	Mondays / Wednesdays / Fridays		Tuesdays / Thursdays	
	Outward journey	Return	Outward journey	Return
1	/	12h12	/	12h12
2	07h30 13h35	12h18 16h13	07h30 12h18	12h18
3	07h31 13h36	12h19 16h14	07h31 12h19	12h19
4	07h35 13h39	12h22 16h17	07h35 12h22	12h22
5	07h36 13h40	12h23 16h18	07h36 12h23	12h23
6	07h37 13h41	12h24 16h19	07h37 12h24	12h24
7	07h46 13h45	/	07h46	/

BUS MAMER 3

SCHOOL YEAR 2024 - 2025



 bus route

 bus stop

BUS MAMER 4




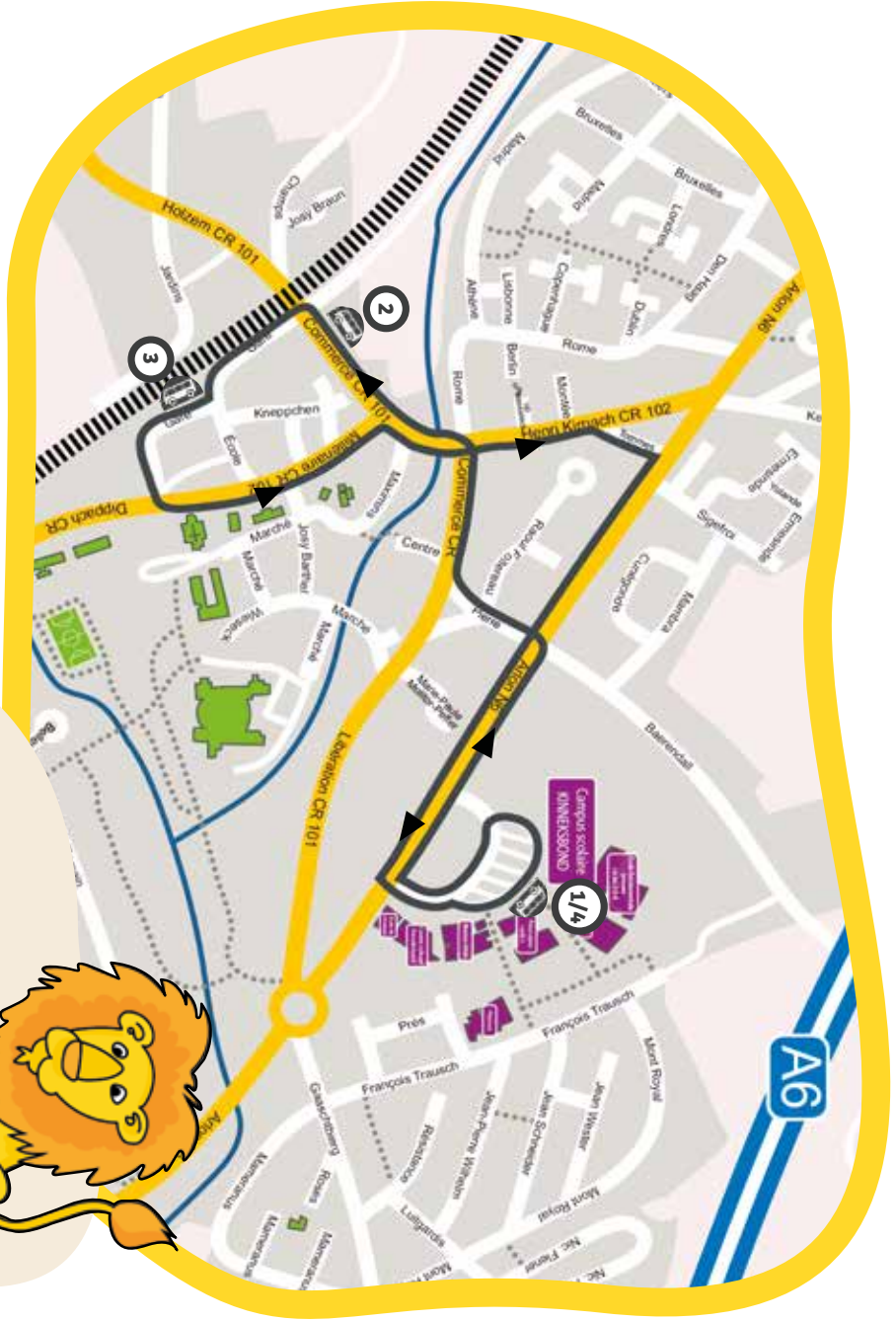
Bus stop	Mondays / Wednesdays / Fridays		Tuesdays / Thursdays	
	Outward journey	Return	Outward journey	Return
1		12h12	16h07	12h12
2	07h39	13h39	16h15	07h39
3	07h41	13h41	16h17	07h41
4	07h42	13h42	16h18	07h42
5	07h43	13h43	16h19	07h43
6	07h45	13h45		07h45

BUS MAMER 4
SCHOOL YEAR 2024 - 2025

BUS MAMMER 5

SCHOOL YEAR 2024 - 2025

 bus route
  bus stop



BUS MAMMER 5

Bus stop	Mondays / Wednesdays / Fridays		Tuesdays / Thursdays	
	Outward journey	Return	Outward journey	Return
1	/	12h12	16h07	12h12
2	07h36	13h36	12h17	16h12
3	07h39	13h39	12h20	16h15
4	07h45	13h45	/	07h45



PEDIBUS MAMER

SCHOOL YEAR 2024 - 2025

MAMER I				
Stop	Outward journey		Return	
1	07h35	13h40	12h25	16h20
2	07h37	13h42	12h23	16h18
3	07h39	13h44	12h21	16h16
4	07h41	13h46	12h19	16h14
5	07h46	13h51	12h14	16h09
6	07h50	13h55	12h10	16h05

MAMER II				
Stop	Outward journey		Return	
1	07h35	13h40	12h23	16h18
2	07h36	13h41	12h22	16h17
3	07h38	13h43	12h20	16h15
4	07h40	13h46	12h18	16h13
5	07h42	13h48	12h16	16h11
6	07h48	13h53	12h10	16h05

MAMER III				
Stop	Outward journey		Return	
1	07h35	13h40	12h25	16h20
2	07h36	13h41	12h24	16h19
3	07h39	13h44	12h21	16h16
4	07h42	13h47	12h18	16h13
5	07h45	13h50	12h15	16h10
6	07h50	13h55	12h10	16h05

- Routing of the Pedibus on the sidewalk
- Pedibus stop
- III Pedestrian crossing on the Pedibus route



Parent representatives introduce themselves



DEFEND YOUR INTERESTS

- Mir setzen eis an fir d'Uleies vun den Elteren a hire Kanner.
- Nous défendons les intérêts des parents et de leurs enfants.
- We defend the interests of parents and their children



SCHOOL ORGANISATION

- Mir ginn eisen Avis zur Schoulogansioun of.
- Nous exprimons notre avis sur l'organisation scolaire.
- We express our opinion on the school organization.



CONSULTATION AND REPRESENTATION

- Mir sinn Usprichpartner fir verschidde schoulesch Instanzen an och d'Elteren. Zweek vun onse Membere vertrieden eis an der Schoulkommissioun.
- Nous sommes un organe consultatif pour les instances scolaires et pour les parents. Deux de nos membres nous représentent à la Commission scolaire de la commune.
- We are an advisory body for the school authorities and for the parents. We have two members representing us at the local school board.



IN TOUCH WITH YOU

- Mir lauschteren Är Meenung zum deeglechen Alldag an der Schoul.
- Nous écoutons vos opinions sur le déroulement journalier de l'école.
- We listen to your opinions about the daily routine at school.



OUR OPINION ABOUT THE PDS

(The School Development Plan)

- No dem Liesen an Analyséiere vum PDS, gi mir eisen Avis zum Contenu of.
- Après lecture et analyse du PDS, nous exprimons notre avis sur son contenu.
- After reading and analysing the PDS, we express our opinion on its content.



repama@mamerschoulen.lu

The Kinneksbond school campus is expanding to include a new Maison Relais, a school swimming pool and the UGDA regional music school.



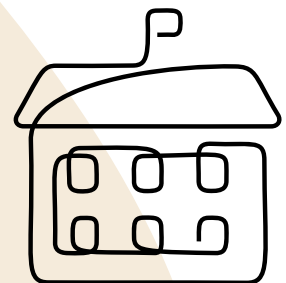
Swimming pool



Maison Relais



Music school





FUNDA- MENTAL SCHOOL CAPELLEN





GENERAL INFORMATION



Capellen school campus

45, route d'Arlon
L-8310 Capellen
Tel. : 26 395 701
www.mamerschoulen.lu



Capellen School Committee:

Leslie PEZZOLI, Maryse BADEN,
Giovanna GIANNINI

School Committee

President : Maryse BADEN Tel.: 691 31 35 28
Members : Giovanna GIANNINI; Leslie PEZZOLI
E-mail : president.capellen@mamerschoulen.lu

Cycle coordinators:

C1 Preschool : Françoise WEYDERT :
francoise.weydert@mamerschoulen.lu

C1 Primary School : Annick STRAUS:
annick.straus@mamerschoulen.lu

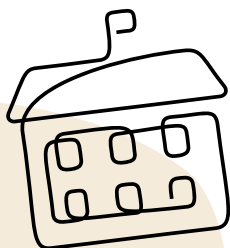
C2 : Guy LEPAGE • guy.lepage@mamerschoulen.lu

C3 : Michel WOLFF • michel.wolff@mamerschoulen.lu

C4 : Joëlle HEIN • joelle.hein@mamerschoulen.lu

Caretakers:

Gilles GOEHLER Tel. : 691 31 35 40,
Luc STEINMETZ Tel. : 691 31 35 71
E-mail : concierge-cap@mamerschoulen.lu



SCHOOL DEVELOPMENT PLAN

After the end of PDS 2 in December 2023, a lot of time was spent taking stock. We realised that some things could not yet be completed and there was a desire to continue working on old elements. An inventory was carried out in the areas specified by Menje in a workshop for the entire teaching staff in January. Priorities for our school emerged from this. These priorities were used to formulate two new goals. The content of these new goals is very similar to that of the PDS 2 goals, which confirms the desire from the review to continue developing in the same direction.

In March, the two objectives were once again approved by the entire teaching staff. From now on, these goals will be worked on in the cycles and sub-goals and action plans will be determined. Much of what has already been successfully implemented will be pursued and further developed. These include projects such as the "Chur Model", "Freiday", "Moving Learning" and "Individualised Learning". We are not reinventing the school, but rather learning from the experiences of recent years and building on them in collaboration with all school partners, the school, parents and Maison Relais.



TEACHING STAFF

Cycle **1** Pre-school

The e-mail addresses of class teachers are as follows: *firstname.lastname@mamerschoulen.lu*

Class name	Teachers	Educators	Telephone
CPc	WEYDERT Françoise	MERGEN Sandra / WELBES Stéphanie	26 395 - 732
	EVEN Marie	HOSCHEID Sandy / GRIESER Bianca	26 395 - 733



Cycle 1

Sandy HOSCHEID, Marie EVEN,
Liz NEUMANN, Leslie PEZZOLI,
Françoise WEYDERT, Stéphanie WEL-
BES, Fabienne JOST, Annick STRAUS,
Bianca GRIESER, Sandra MERGEN,
Nathalie SCHOLTES

Class name	Teachers	Telephone
CPsA	STRAUS Annick	26 395 - 742
CPsB	PEZZOLI Leslie	26 395 - 743
CPsC	SCHOLTES Nathalie	26 395 - 739
CPsD	NEUMANN Liz	26 395 - 740
CPsE	JOST Fabienne	26 395 - 755

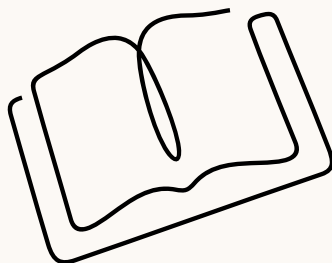
Cycle **1** Pre-school

Other teaching duties in Cycle 1

Supernumerary	LANNERS Caroline DIEDERICH Monique WELTER Françoise
---------------	---

Class name	Teachers	Telephone	Other teaching duties in Cycle 2
C2.1A	LEPAGE Guy	26 395 - 704	Supernumerary SCHMIT Christine NEIENS Gilles BIEVER Gil
C2.1B	WITRY Catherine	26 395 - 702	
C2.2A	JEMMING Sandy / BINTENER Stéphanie	26 395 - 705	
C2.2B	RODENBOURG Sophie	26 395 - 707	

Cycle **2**



Cycle 2
Christine SCHMIT,
Sophie RODENBOURG,
Guy LEPAGE, Catherine WITRY,
Stéphanie BINTENER
Missing on the photo:
Sandy JEMMING, Gilles NEIENS

TEACHING STAFF

Class name	Teachers	Telephone
C3.1A	SOMMAVILLA Carole	26 395 - 721
C3.1B	GIANNINI Giovanna / WOLFF Michel	26 395 - 719
C3.2A	BADEN Maryse / DOCKENDORF Elisabeth	26 395 - 723
C3.2B	RECHT Elisabeth	26 395 - 724

Cycle 3

Other teaching duties in Cycle 3

Surnuméraire	WOJSISCHOWSKI Serge WOLFF Michel KEIPES Sandrine
--------------	--

Contact for Cycle teachers:
cycle3.capellen@mamerschoulen.lu.

Cycle 3

Michel WOLFF, Carole SOMMAVILLA,
Serge WOJSISCHOWSKI, Elisabeth DOCKEN-
DORF, Giovanna GIANNINI, Maryse BADEN
Missing on the photo: Elisabeth RECHT





Cycle **4**

Cycle 4

*Martine DENNEWALD, Elena JEAN,
Lauréanne KURT, Joëlle HEIN*

Class name	Teachers	Telephone
C4.1A	KURT Lauréanne	26 395 - 713
C4.2A	METZ Jil	26 395 - 714
C4.2B	DENNEWALD Martine	26 395 - 716

Other teaching duties in Cycle 4

Surnuméraire	HEIN Joëlle BIEVER Gil KEIPES Sandrine JEAN Elena
--------------	--

Contact for Cycle teachers:
cycle4.capellen@mamerschoulen.lu

IEBS (Mamer)

	Telephone
FANDEL Mireille mireille.fandel@mamerschoulen.lu	26 395 - 700

Reception of newcomers

MAY Nadine nadine.may@mamerschoulen.lu	26 395 - 712
REGENWETTER Roy roy.regenwetter@mamerschoulen.lu	26 395 - 712

SCHOOL TRANSPORT AND PEDIBUS

School transport

- School transport is exclusively for children attending pre-school or primary education.
- To use school transport, you must first register with the local education department.

Pédibus

- The *Pédibus* is a system whereby children are accompanied to school on foot by escorts hired by the local authority. The children wait for the *Pédibus* at the

agreed meeting point (stop) and walk with escorts to school. The "Schoulwee" logo is visible on the ground and the *Pédibus* logo is displayed at the bus stops.

School bus

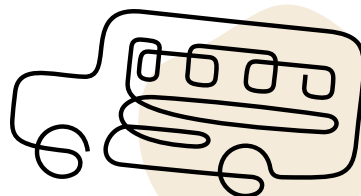
- Our school buses take pupils to and from school at set times. The different routes are represented by pictures of animals. This avoids confusion around bus stops and the risk of getting on the wrong bus. All buses have an adult escort who rides along.



BUS CAPELLEN 1



BUS HOLZEM 1



Bus CAPELLEN



Andrea
COUFALOVA



Mireille
SASSEL

Pédibus CAPELLEN



Dagmar LEHMANN



Céline SCHMIDT



Laura PASQUARELLI



Eleonora ALVANOÛ



Alessandra LAROSA



Mônica DIAS CASTANAL



Tina PRUMBAUM



Aurélie BOISSON



Sandra MERGEN



Stéphanie WELBES



Jessica DUNKEL



Bianca GRIESER



Sandy HOSCHEID



Martine BESCH



— bus route

 bus stop

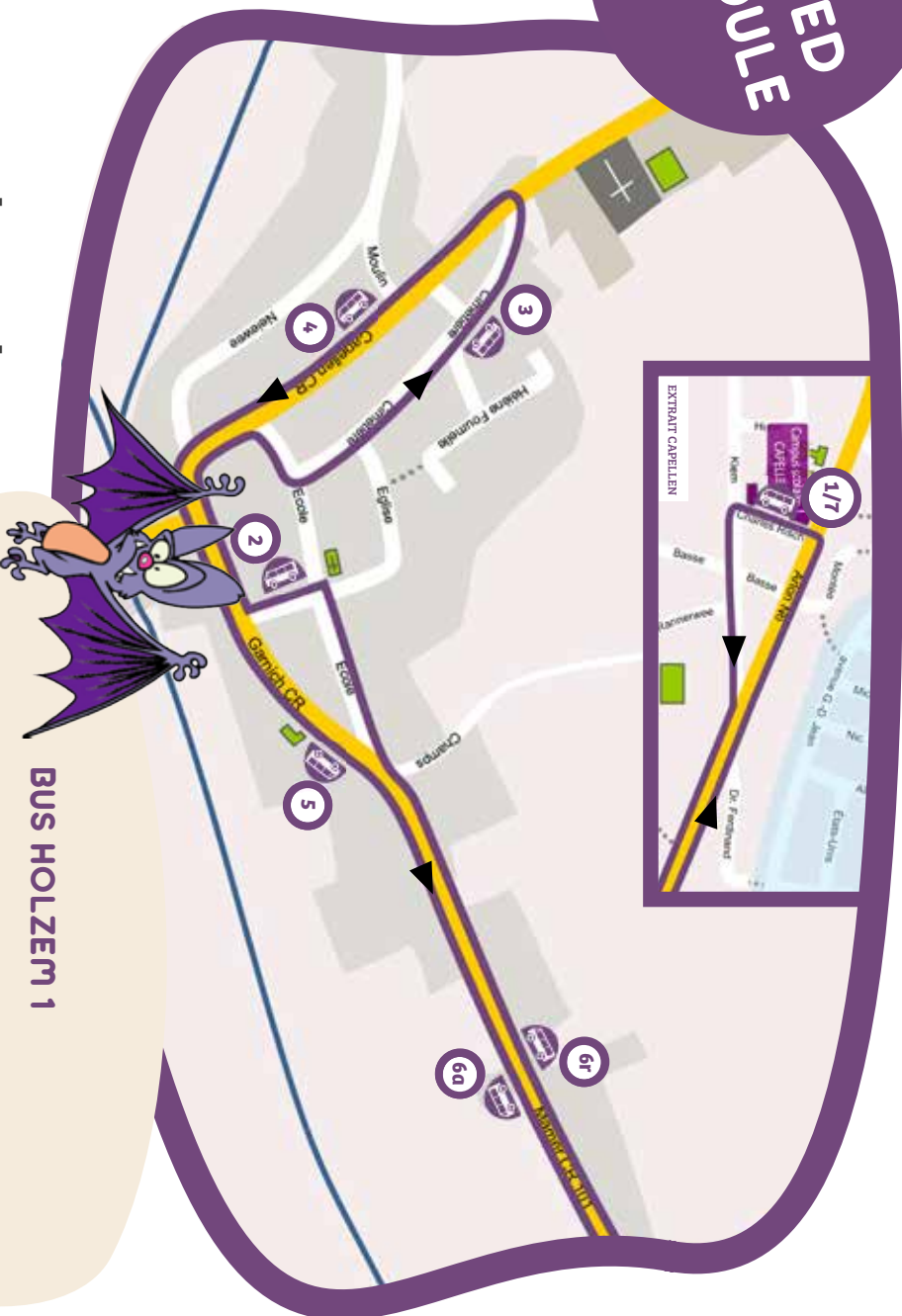
BUS CAPELLEN 1

Bus stop	Mondays / Wednesdays / Fridays		Tuesdays / Thursdays	
	Outward journey	Return	Outward journey	Return
1		12h12	16h05	12h10
2	07h26	13h33	12h22	16h17
3	07h28	13h35	12h24	16h19
4	07h40	13h47	12h15	16h10
5	07h42	13h49	12h17	16h12
6	07h43	13h50	12h18	16h13
7	07h46	13h53		07h46

BUS CAPELLEN 1

SCHOOL YEAR 2024 - 2025

ADAPTED SCHEDULE



 bus route
 bus stop

BUS HOLZEM 1

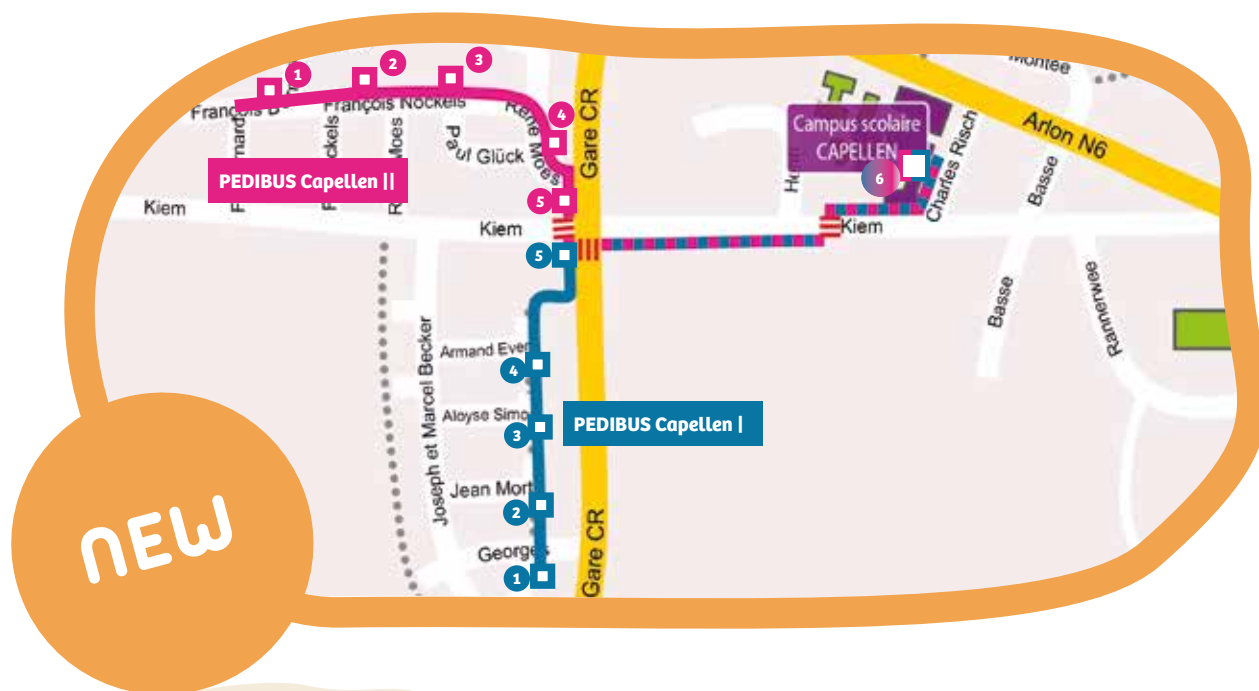
Bus stop	Mondays / Wednesdays / Fridays		Tuesdays / Thursdays	
	Outward journey	Return	Outward journey	Return
1	/	12h10	/	12h10
2	07h25	12h27	07h25	12h27
3	07h27	12h29	07h27	12h29
4	07h29	12h31	07h30	12h31
5	07h31	12h33	07h31	12h33
6a/r	07h33	12h25	07h33	12h25
7	07h50	13h54	07h50	/

BUS HOLZEM 1

SCHOOL YEAR 2024 - 2025

PEDIBUS CAPELLEN

SCHOOL YEAR 2024 - 2025



CAPELLEN I

Stop	Outward journey		Return		Stop	Outward journey		Return	
	Start	End	Start	End		Start	End	Start	End
1	07h35	13h40	12h17	16h22	4	07h41	13h46	12h11	16h16
2	07h37	13h42	12h15	16h20	5	07h47	13h52	12h05	16h10
3	07h39	13h44	12h13	16h18	6	07h53	13h58	12h02	16h07

CAPELLEN II

Stop	Outward journey		Return		Stop	Outward journey		Return	
	Start	End	Start	End		Start	End	Start	End
1	07h35	13h40	12h20	16h20	4	07h39	13h45	12h16	16h16
2	07h36	13h41	12h19	16h19	5	07h41	13h47	12h14	16h14
3	07h38	13h42	12h18	16h18	6	07h48	13h54	12h07	16h07

— Pedestrian crossing on the Pedibus route

□ Pedibus stop

||| Routing of the Pedibus on the sidewalk

REPACH PARENT REPRESENTATIVES

REPACH (Representatives of Parents: Capellen-Holzem) works with the school committee in responding to the various school partners.

What does it do?

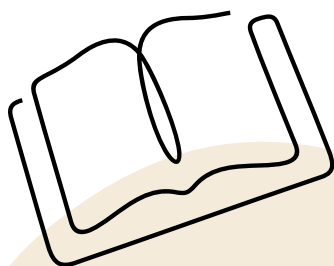
- One of its tasks is to draw up an opinion on the school development plan (PDS).
- Every year, it is asked to submit recommendations on the educational organisation of the school.
- It defends the interests of parents and their children.
- In the event of conflict between pupils/parents and the school, REPACH members can act as intermediaries.
- It is an advisory body for school authorities and parents.
- One member represents REPACH on the municipality's School Commission.

The Representatives of Parents Committee is renewed every three years. By becoming a member of this body, parents have the opportunity to cooperate in drawing up the School Development Plan (PDS) and to work together with teachers and the School Committee, as a school community can only develop if there is active and productive interaction between all the players in the school. This includes teachers, the parents' community, the School Committee and all students.

Members

Céline Hansel-Mertes

Contact : repach@mamerschoulen.lu



Céline
HANSEL-MERTES

MAISON RELAIS

What a Maison Relais transition centre is

For children:

- A pleasing atmosphere of fun and pleasure
- A feeling of well-being, of being accepted and respected
- The right to be a child
- A safe, diverse and varied environment
- A place to develop interests and talents
- A place to make friends
- Help in doing homework
- A variety of leisure activities (sport, crafts, games, music, nature)
- The opportunity to make choices (games, friends, activities, room layout, etc.)
- The right to express oneself
- A healthy diet

For families:

- Cooperation with parents
- An educational partnership
- Regular contact with educational staff
- Support and advice on educational issues
- Parents meeting each other
- Flexibility
- Information



Kitchen (Mamer)



Staff C1 (Mamer)



Staff C2/C3.1 (Mamer)



Staff (Mamer)

Registration

Registration with the Maison Relais can be done exclusively within the framework of predefined time slots. Billing is based on modules. The registration procedures for each module are as follows:

- Annual registration
- Monthly registration
- Occasional registration

Financial participation occurs through the "service voucher" system: parents wishing to use their service voucher scheme must apply to the local authority in their place of residence. They will then be issued a personalized membership card. Membership is free and valid for twelve months.

You can find more details about the service voucher scheme at:

www.mamerschoulen.lu

www.staarkanner.lu

www.arcus.lu

You can also directly address the Maisons Relais in Mamer and Capellen.

Our local "Biergerzenter" (Citizen Service Center) will be happy to answer any questions you may have about joining the child-care service voucher scheme.
(Tel.: 31 00 31-48).



Staff (Mamer)
Elisabeth MICHAELIS
(Executive officer),
Myriam SCHMITZ
(Executive officer),
Ana MARQUES (Secretary)

Maison Relais Kinneksbond Mamer

6, um Kinneksbond · L-8210 Mamer
Manager :
Elisabeth MICHAELIS, Myriam SCHMITZ
mr.mamer@arcus.lu
Tel. : 26395-200 ou 691 323 500

Maison Relais Capellen

45, route d'Arlon L-8310 Capellen
Manager: Diana MENZEL
mr.capellen@arcus.lu
Tel. : 26395-800

Opening hours:

Monday, Wednesday & Friday:
7.00 am to 8.00 am/11.40 am to 2.00 pm/4.00 pm to 7.00 pm

Tuesday & Thursday:
7.00 am to 8.00 am/11.40 am to 7.00 pm

The Maison Relais also operates during the school holidays from 7.00 am to 7.00 pm. Between Christmas and New Year, the Maison Relais centres will remain closed, as well as on official public holidays.

Staff C3.2/C4 (Mamer)



Staff C2-C4 (Capellen)



Staff C1 (Capellen)



SOCIAL AND SUPPORT SERVICES

Service Krank Kanner Doheim GARDES D'ENFANTS MALADES A DOMICILE



95, rue de Bonnevoie
L-1260 Luxembourg

Tél.: 48 07 79
e-mail: skkd@fed.lu

HEURES D'OUVERTURE

lundi au jeudi
7:00 – 12:00
14:00 – 18:00

vendredi
7:00 – 12:00
après répondre

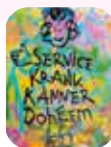
Répondre
18:00 jusqu'au lendemain 7:00

Le service est fermé les weekends et jours fériés (Répondeur)

Pour faciliter l'organisation des gardes, veuillez bien remplir une fiche d'inscription.

Il existe aussi la possibilité d'une inscription en ligne sur le raccourci:

[WWW.SKKD.LU/
INSCRIPTION](http://WWW.SKKD.LU/INSCRIPTION)



DONATIONS

BCEE (Banque et Caisse d'Épargne de l'État)
IBAN LU74 0019 7355 5369 3000
BIC BCEEULL

Association sans but lucratif
R.C.S. Luxembourg no. F1391

- ENCADREMENT INDIVIDUEL ADAPTE AUX BESOINS DE L'ENFANT
- SURVEILLANCE ET PRISE EN CHARGE A DOMICILE EN TOUTE SECURITE

L'OBJECTIF

Le but primordial du SKKD est d'offrir une garde individuelle pour enfants malades à domicile



Le SKKD est un service de FEMMES EN DETRESSE



B. P. 1024
L-1010 Luxembourg

Tél.: 40 73 35
e-mail: organisation@fed.lu
www.fed.lu

L'a.s.b.l. FEMMES EN DETRESSE

est reconnue d'utilité publique par arrêté grand-ducal du 17 septembre 2004

Les dons à FED ASBL sont fiscalement déductibles

LES GARDES

LES GARDES ONT LIEU

entre 7:00 et 19:00 heures

LA DURÉE D'UNE GARDE NE PEUT PAS DÉPASSER

9 heures de suite

UNE VISITE MÉDICALE EST INDIQUÉE AU 2IÈME JOUR DE LA GARDE



- garde individuelle à domicile pour enfants malades
- ceci permet aux parents de poursuivre leur activité professionnelle
- et aux enfants de se rétablir dans les meilleures conditions et dans leur milieu familial
- les demandes de familles monoparentales sont considérées comme priorité

LES COLLABORATRICES

Toutes les collaboratrices du « Service Krank Kanner Doheim » ont une formation dans le domaine socio-familial et participent régulièrement aux formations internes

LES TARIFS

- les tarifs sont publiés sur le site internet de Femmes en Détresse
- le revenu imposable du ménage sera pris comme base de calcul pour la participation aux frais de garde
- pour les familles monoparentales le certificat de résidence élargi, établi par la commune est indispensable

FRAIS DE DEPLACEMENT

- ½ heure de déplacement pour la ville de Luxembourg
- 1 heure de déplacement pour toutes les autres communes

Medical and social services

Chloé TATIN (assistante sociale)
chloe.tatin@ligue.lu
Centre médico-social
2, rue G.C. Marshall
L-2181 Luxembourg



PARENTS' ASSOCIATION



Mamer Parents' Association (APEM)

The committee

President: : Isabelle WEIS-KOLLWELTER

Secretary : Diana CAUBET

Treasurer : Anne-Marie SCHLUNGS

Members : FABER Carine Mirela DELIC; Eleonora PADOPOULUS-ALVANO; Kaouthar MAROUANE; Carlo WEIS; Mattia LATTANZIO Júlia FORTES LIMA; Shashika SAMARAWICKRAMA; Natacha NICLOU

Contact

apem@mamerschoulen.lu

Capellen-Holzem Parents' Association (APECH)

The committee

President : Kim ARRENSDORFF

Vice-president : Anne KNEPPER-FRISCH

Treasurer : Jenny LEY

Secretary : Tania RIBEIRO

Members : Françoise JAMINET; Stéphanie MULLER;

Corine ADAM; Dan LEONTE; Céline HANSEL;

Danielle WEALER; Andrés HESSENMÜLLER;

Aline KERSCHEN; Stéphanie WELBES

Contact

Tania RIBEIRO

associationapech@gmail.com

Tel. : 661 787 885



ART AT SCHOOL

The Commune of Mamer's Cultural Affairs Commission is offering art at school workshops organised by the artist Iva Mrazkova for children in Cycles 2.2 to 4.2 during the week and after school. By exploring art through a variety of techniques to include drawing, painting, sculpture, modelling and others, the workshop can focus primarily on stimulating children's creativity. The parents of the students concerned

will be informed by letter of the organisation of the courses at the beginning of the school year. Classes will be held at the Kinneksbond Campus on Thursday afternoons from 2.00 p.m. to 3.30 p.m. for cycles 2.2 and 3.1, and from 4.00 p.m. to 5.30 p.m. for cycles 3.2 to 4.2. Space is limited.



MUSIC AT SCHOOL

The Cultural Affairs Committee offers six music workshops during school hours, enabling children in Cycles 2 to 4 to discover different musical instruments such as guitar, saxophone, string instruments, percussion, etc.

Cultural Affairs Committee:
E-mail: cac@mamer.lu



LASEP

LASEP (Ligue des Associations Sportives de l'Enseignement Primaire – League of Sports Associations of Primary Education) organises sports activities for children in primary and pre-school classes.

Details of the organisation and registration procedures will be sent to pupils at the start of the school year. The activities take place in the Kinneksbond sports hall in Mamer or in the sports hall on the Capellen school campus. Sessions will start at the beginning of October 2024.

LASEP Mamer

Tuesdays:

Cycle 2: from 1.30 to 2.30

Cycles 3 and 4: from 2.30 to 3.30

Thursday:

Preschool A: 1.30 pm to 2.30 pm

Pre-school B: 2.30 pm to 3.30 pm

Pre-school group A

children enrolled in the classes of Ms FELLER, Ms ZEIEN, Ms COLLE and Ms DARNE.

Pre-school group B

children enrolled in the classes of Ms LEHNERS, Ms PERL, Ms PEZZOLI and Ms Da Silva Pinto.

Person in charge LASEP Mamer

Daniel CASOLI (instituteur)

daniel.casoli@mamerschoulen.lu

LASEP Capellen

Monday :

Cycle 1: from 4:00 pm to 5:00 pm (pre-school)

Tuesday:

Cycles 2: from 2.00 pm to 3.00 pm

Cycles 3-4: from 3.00 pm to 4.00 pm

Person in charge:

Jil METZ (teacher)

jil.metz@mamerschoulen.lu



LEFT, RIGHT, LEFT ...

- I always walk on the safe side of the pedestrian way, meaning the side away from the cars.
- I use the pedestrian crossing when I cross a road. When the traffic lights are red, I stay on the sidewalk. When the traffic lights are green, I can cross the road, while still paying attention to what is going on around me. If there are no traffic lights, I look left, right, then left again to make sure there are no cars moving towards me before crossing the street.
- If there is no pedestrian crossing, I choose a clear place to cross the road, where I can see well if any vehicles are approaching. Before crossing the road, I check the situation : Left, right, left...



PARENTS NEED TO SET A GOOD EXAMPLE!

- Explain the essential traffic regulations to your child.
- Point out possible dangers to your child.
- Walk the way to school a few times together to get used to it.
- Make sure you respect traffic regulations as well : do not park your car on a sidewalk or pedestrian crossing.
- Only let your child get in or out of the car on the side of the car that is closest to the sidewalk.

I AM VISIBLE!

To make sure drivers can see me better in the dark, I:

- wear bright clothes;
- stick reflective patches on my clothes or on my school bag;
- wear a safety vest.

SAFETY BELTS AND CHILD'S SEATS!

Even on short trips!

- Everyone needs to be buckled up in a car, either by a seatbelt or in a child's seat.
- Children between 3 and 17, who are less than 150 cm tall, must be seated in a child's seat corresponding to their size and weight or use a booster seat.



Be especially careful at the start of the school year

Young children are not used to the dangers of traffic yet and can be easily overseen by drivers. Moreover, they might be nervous during the first days of school and therefore forget about essential traffic rules. All traffic members should therefore be especially careful :

- Be careful and watch out for children.
- Slow down and reduce your speed, especially around schools.



SCIENCE, NATURE AND YOU:

Welcome to the Lycée Josy Barthel in Mamer!

The Lycée Josy Barthel de Mamer is a science-oriented secondary school located in your immediate vicinity, which provides a good environment for almost 1,300 students of different nationalities. Every year, our students achieve excellent results in national examinations and tests. We offer a very interesting range of courses, so you too can find your path.

Nature is very important to us, so we have a number of sustainable projects. We have our own biotope, our own nature park with beehives, as well as a school garden; we are located very near the Mamer valley which is ideal for excursions. We have very good infrastructure to include a swimming pool of our own, a climbing wall and plenty of sports opportunities.

In all our classes, be they standard, general or vocational orientation, the emphasis is on science and architecture. You'll find ample further information by visiting our site at www.ljbm.lu.

Since 2003, a qualified team of around 200 teachers has been guiding students through their studies in a pleasant, family-like atmosphere, all the while ensuring the necessary level of discipline. Genuine solidarity, sustainability, shared values and high-quality, modern teaching based on digital skills are all aspects that prepare students for their final exams and life after school.

We look forward to counting you among us. Register with us and we'll be delighted to have you on board!

Claude Christnach

Director



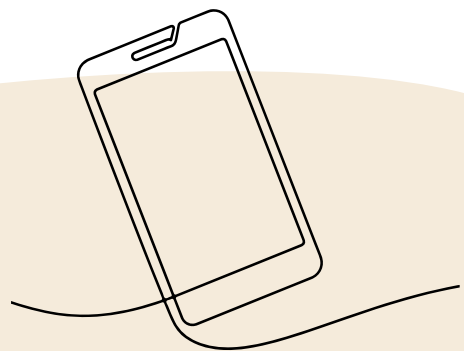
LYCÉE
**JOSY
BARTHEL**
MAMER

SMS2CITIZEN



Sms2citizen is a free messaging service provided by the municipal administration. This alert service allows citizens to be kept informed of important, serious and lastminute municipal events. Messages are sent free of charge by SMS to users' mobile phones or smartphones. Registration is easy via the website www.sms2citizen.lu. The Municipality offers several groups in which you can

register: Apart from the groups „Mamer”, „Capellen” and „Holzem”, a great deal of importance is attached to information for pupils and parents of pupils in the Municipality with the groups „Primary School” and „School Transport”. Registration and use of sms2citizen service are free of charge.



Welcome breakfast

**Monday, 16 September 2024 from
8.00 am to 10.00 am**

**The two parents' associations APEM
and APECH are putting on a welcome
breakfast at the In Mamer and
Capellen sites. All parents are invited
to meet and spend a congenial
moment at the beginning of the
school year.**

**APEM (Mamer):
Large gym in the cycle 1 building
(pre-school) at
the Kinneksbond site**

**APECH (Capellen-Holzem):
Primary school and
Preschool buildings**



HOLIDAYS

for the school year
2024/2025

All Saints:

from Saturday, 26 October 2024
to Sunday, 3 November 2024

St. Nicolas:

Friday, 6 December 2024

Christams:

from Saturday, 21 December 2024
to Sunday, 5 January 2025

Carnival:

from Saturday, 15 February 2025
to Sunday, 23 February 2025

Easter:

from Saturday, 5 April 2025
to Sunday, 20 April 2025

Easter Monday:

Monday, 21 April 2025

Labour Day:

Thursday 1st May 2025

Europe Day:

Friday, 9 May 2025

Ascension Day:

29 May 2025

Whitsun:

from Saturday, 24 May 2025
to Sunday, 1st June 2025

Whitsun Monday:

Monday, 9 June 2025

National Day:

Monday, 23 June 2025

Summer holidays:

from Wednesday, 16 July 2025
to Sunday, 14 September 2025

Photos Pierre Matgé / Video-productions.lu, Mamer Schoulen, Gemeng Mamer, AdobeStock

Publisher Public Relations Department of the Municipality of Mamer

Technical Council School Committee

Layout creative corner Grevenmacher

Printing Imprimerie Heintz, Pétange

Printed on recycled Balance Silk 115 gram paper, FSC, PEFC and EU Ecolabel certified and bleached without added chlorine (TCF).

www.mamerschoulen.lu

