



Schoolbuet

GUIDE FOR PARENTS AND PUPILS

2022-2023



PRIMARY SCHOOLS OF MAMER AND CAPELLEN

CONTENTS

Preface by the Deputy Mayor, Gilles Roth	1	Internet & Social Media	33
Words of welcome from the presidents school of the committees	2	Capellen Primary School	36
Luxembourg school system	4	School Development Plan (SDP) Capellen	38
General information on the Mamer schools	6	Teaching staff in Capellen	39
Welcome, EBS, municipal subsidy	8	School transport and Pédibus	42
School library	10	Representatives of parents of Capellen/Holzem pupils (RePaCH)	47
Vivarium	12	Day Care Centre	48
Sports education	13	Social and support services	52
School rules	14	Associations parents of APEM and APECH	
Mamer Primary School	16	Art and music at school	54
School Development Plan (SDP) Mamer	18	LASEP (Ligue des Associations Sportives de l'Enseignement Primaire)	
Teaching staff in Mamer	20	Safe route to school	56
School transport and Pédibus	24	Lycée Josy Barthel	57
Representatives of parents of Mamer pupils (RePaMa)	32	sms2citizen	58
		New Day Care Centre	59

IMPRESSUM

The „Schoulbuet“ of the MamerSchoulen is published under the responsibility of the Mayor and College of Aldermen of the Municipality of Mamer.

Pictures: Pierre Matgé / Videoproductions.lu, MamerSchoulen, Municipality of Mamer, iStockphoto.

Layout and printing: Imprimerie Heintz, Pétange

Printed on recycled Balance Silk 115 gr. certified FSC, PEFC and EU Ecolabel and bleached without adding chlorine (TCF).



Roger NEGRI, Alderman; Gilles ROTH, Mayor; Luc FELLER, Alderman



A living school

After two difficult years for children, parents and teachers due to the Covid-19 pandemic, the start of the 2022/2023 school year is marked by a return to normality. This is reflected in the large number of projects underway or planned for the coming months. They are being implemented together with the teaching staff of the fundamental schools in Mamer and Capellen.

The attractiveness of the schools in our Municipality is reflected in the high number of pupils: more than 800 children will attend our primary schools from 15 September. To keep up with the demographic growth, we are offering innovative, lively schools, which are adapted to the needs of parents and children. A new Day Care Centre is being built on the Kinneksbond campus. Not to mention the brand-new school swimming pool, which is being built there.

There can be no quality education without motivated staff! The primary schools in the Municipality of Mamer are characterised by committed teaching staff who constantly enrich the curriculum with innovative projects.

In Mamer and Capellen, education goes far beyond school hours. Whether it is summer camps, educational trips and projects, or the



introduction to music in cooperation with the UGDA, the teachers are always looking for new initiatives, which contribute to the good development of the children's knowledge and skills. The latest project in the pipeline is the creation of a cycling school.

In conclusion, it should be noted that the pandemic has had the side effect of accelerating digitalisation, also at the level of education. In the primary schools of the Municipality of Mamer, more than 150 iPads are now at the disposal of the pupils. And the website of the Mamer Schools will be modernised to become even more informative and entertaining.

Available in analogue and digital form, the new edition of the „Schoulbuet“ will be a valuable aid throughout the 2022/2023 school year. You will find all the information you need about your child's schooling and much more.

I wish you an excellent and lively school year 2022-2023.

Gilles ROTH
Deputy Mayor



You are holding the new edition of the Schoulbuet, the information magazine of the schools of the Municipality of Mamer in your hands. This edition is distributed in French to all the mailboxes in the Municipality. The German and English versions can be downloaded online at www.mamer.lu/schoulbuet2022



Words of welcome from the Presidents of the School Committees



Dear Parents,

During this past school year, the school was able to return to more or less normal functioning. Our two school compounds have carried out several major projects in collaboration and with the support of the Municipality of Mamer, thanks to the great commitment of the whole school community.

In December, the pupils raised over EUR 7.000 for Care by making lanterns. With the peace chain in March 2022, both primary schools made a gesture for peace. You can watch the video on www.mamerschoulen.lu.



Throughout the school year and in collaboration with the UGDA, Introduction to Music took place in cycle 1 and cycle 3, where pupils participated in singing lessons and learned songs in different languages. The culmination of this project was the opening concert of the Fête de la Musique 2022 with more than 150 pupils. It was a great success, appreciated by all involved and the spectators.

The Minister of Education visited the Cycle 1 pupils to learn more about the project. We are pleased to announce that this year the project will be continued with the UGDA music school.

In addition, the Municipality and the schools organised a total of 5 camps for cycle 3.2 and 4 classes, including at Morzine and Sangatte. In total, 340 pupils took part in these holiday camps. These educational trips would be unthinkable without the generous financial support of the Municipality. We are proud that these holiday camps are a great tradition in our Municipality.

Many other projects, such as „Nachahltigkeit macht Schule“, „AMVA“, „Fro de Bauer“, „Equal Opportunities“ in cooperation with the Equal Opportunities Commission, „Schulhebamme“, inter-cycle projects, to name but a few, have given the children the opportunity to learn many interesting things.

Traditional activities such as „Apeldag“, „Beiendag“, „Teambuildingtage“, „Vivariumbibliocroissant“ are regularly on the agenda.

Important elements of both schools are still the two school libraries and the Vivarium project.

But we will not stop there.

On 15 September 2022, with the start of the new school year, the modernised website of the primary schools of Mamer and Capellen will go online. We invite you to visit this new website (www.mamerschoulen.lu).



A new project started in June 2022 with the agreement of the College of Aldermen. The primary schools ordered 20 bicycles for the creation of a cycling school. The aim is to teach and improve cycling for pupils in cycle 2.1. The teaching staff will be specially trained for this purpose as part of the school's in-service training.

More than 150 iPads are and will be used in the new school year to support pupils in their learning and to open up new ways of learning with the help of specific applications.

The School Development Plan (SDP) will continue to be a major pillar for the schools in the future. The main aim is to design the school in a way, which takes into account the needs of all partner schools. You can find more information about the SDPs in this Schoulbuet.

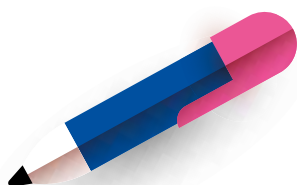
Creating a living school in which children enjoy learning and teachers enjoy teaching is always our priority.

Maryse BADEN

President of the School Committee EF Capellen

Bob FEYEREISEN

President of the School Committee EF Mamer



The Luxembourg School System

In the Grand Duchy of Luxembourg, primary education is provided by public, private or international schools.

The public primary school caters for children aged 3 to 12. Any child living in Luxembourg aged 4 years or more before **1 September 2022** must attend the primary school.

Early-learning

Cycle 1 includes an optional first year: early-learning school (3 to 4 years). It allows children to make contact with other children in a playful way. Every child who has reached the age of three by **1 September 2022** can be admitted. Enrolment is free and must be for a minimum of three half-days per week (including at least one afternoon).

The Municipality of Mamer will organise a second early-learning intake after the Christmas break for children who have reached the

age of three between **1 September 2022 and 31 December 2022**.

The enrolment of these children depends on the availability of free slots. However, according to the ministerial regulation, school transport for pre-school children is not provided by the Municipality.

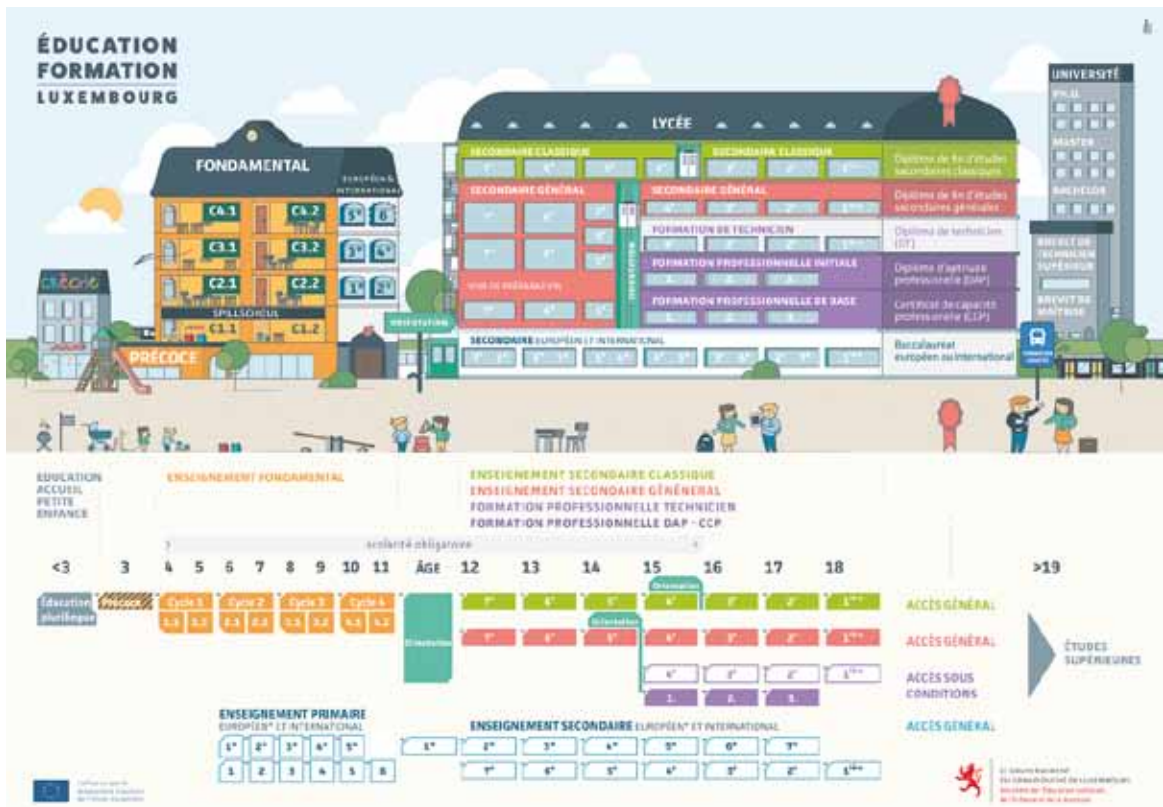
Cycle 1.1 & 1.2

This is followed by the pre-school education which every child who has reached the age of four by **1 September 2022** must attend.

For two years, the Luxembourg language, communication and social skills are taught, as well as mathematics and writing techniques.

Cycles 2, 3 and 4

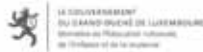
(6 to 12 years) correspond to primary education. For 6 years, the emphasis is on literacy, learning the German, French and Luxembourg languages, mathematics, science



awareness including the humanities and natural sciences, physical expression, psychomotor skills, sport and health, aesthetic and cultural awareness including art and music. The primary school adapts methods and contents to the needs of each pupil, developing a competence-based approach.

Primary education in Luxembourg is structured in **fifteen regional directorates**.

**Directions de l'enseignement
fondamental au Luxembourg 2022**



1 Direction LUXEMBOURG (a-c)	4 Direction PÖRTERDANGE (a-c)	7 Direction DUEDELANGE (a-c)	10 Direction GEBVORNACHEN (a-c)	13 Direction REDANGE (a-c)
2 Direction MAMER (a-c)	5 Direction SANEM (DRLVLA) (a-c)	8 Direction BETTEMBOURG (a-c)	11 Direction ECHTERNACH (a-c)	14 Direction DIEBICH (a-c)
3 Direction PETANGE (a-c)	6 Direction ESCHALLETTE (a-c)	9 Direction BEMICH (a-c)	12 Direction MERSCH (a-c)	15 Direction WELTZ (a-c)

Today, as in the past, we learn to read, write and calculate at school. But this learning no longer represents an end in itself, but a basis for further learning. This is why the necessary skills are defined, which each child must acquire at different stages of their school career.

LES BRANCHES			
Cycle 1	Cycle 2	Cycle 3	Cycle 4
Raisonnement logique – mathématiques	Mathématiques	Mathématiques	Mathématiques
Langage, langue luxembourgeoise et ouverture aux langues	Alphabétisation et langues	Langues	Langues
Découverte du monde par tous les sens	Éveil aux sciences	Éveil aux sciences	Sciences
Psychomotricité, expression corporelle et santé	Corps, motricité et santé	Sports et santé	Sports et santé
Expression créative, éveil à l'esthétique et à la culture	Expression créative, éveil à l'esthétique et à la culture	Arts et musique	Arts et musique
Vie en commun et valeurs	Vie en commun et valeurs	Vie en commun et valeurs	Vie en commun et valeurs

These **competency bases, defined by the Luxembourg study plan**, enable pupils to progress to a higher level and to obtain a qualification, which corresponds to their abilities and interests.

The competency-based approach to teaching aims to have the child demonstrate the use of basic knowledge and skills learned in closed exercises (tests) in open, competency-based work. The assessment of the primary school reflects in the intermediate reviews and in a formative way the efforts of the pupils in open exercises in the areas of oral and written comprehension and production as well as in 4 areas of mathematics. The performance, which is described by the letters A to D, is not a summative result but only shows the evolution of the pupil in relation to himself/herself and is not certifiable for school progression.

Parents, as indispensable partners of the school, are directly informed of the assessment and of the progress of their child in relation to the objectives to be reached: at the end of each term, parents are called for an individual interview.

General information on the Mamer Schools



School service

servicescolaire@mamer.lu · www.mamer.lu

1, Place de l'Indépendance · L-8252 Mamer · Post address: B.p. 50 · L-8201 Mamer

Opening times: Mon-Fri: 8h00 – 11h30 & 13h30-16h30

Kim LEIDI, kim.leidi@mamer.lu Tél.: 31 00 31-44

- Enrolment, exemption requests, school transport

Marc BRAUN, marc.braun@mamerschoulen.lu Tél: 26 395-600

- Secretariat EF Mamer, staff assistant, school transport

Marc THILL, marc.thill@mamerschoulen.lu Tél.: 26 395-701

- Secretariat EF Capellen

Tom PLUNE, tom.plune@mamer.lu Tél.: 31 00 31-51

- Head of department, general matters

School Committee

President: Luc FELLER

Secretary: Christiane HAMES

Members: Maryse BADEN; Lydia BINTENER; Natalie DARNÉ; Ben DELAGARDELLE;
Bob FEYEREISEN; Simone FRANK; Gilles REGENER; Franky KAYSER; Jessica KLOPP;
Nadine KNEIP; Nadine SCHMID; Pascale TAPELLA; Vanessa TARANTINI;
Claudine VERVIER-WIRTH; Yves WATRY.



School year 2022/2023

START OF TERM: Thursday 15 September 2022

Times:	Start of the morning lessons:	07.55
	End of lessons: • Cycle 1:	11.40
	• Cycles 2-4:	12.00
	Start of the afternoon lessons (Monday, Wednesday, Friday): Cycles 1-4:	14.00
	End of lessons:	16.00

Consultations for parents

- Information meeting: at the start of the school year
- Individual interview on the subject of the intermediate report: at the end of each term
- Individual consultations: by appointment



Support systems and social services

Reception class for newcomers

Newly arrived children who do not master any or at most one of the three languages of primary education are supported by the reception class leaders.

These children are enrolled in a home class and receive language teaching in the reception class as part of the normal timetable.

Specially trained teachers take care of the children for a period of several months to several years. Their language classes are based on an interactive approach.

The aim is to enable the children to find their way in their new environment, to communicate in the new language and to learn it well enough to be able to follow the regular les-

sons in their home class. During the transition phase, the host teachers still provide occasional support to the children to facilitate full integration into their class.

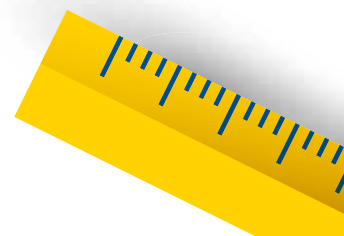
BREDEN Tanja, Mamer
tanja.breden@mamerschoulen.lu

MEYER Cathy, Mamer
cathy.meyer@mamerschoulen.lu

MAY Nadine, Capellen
nadine.may@mamerschoulen.lu



Reception: Nadine May, Cathy Meyer, Tanja Breden



Team for children with special needs

In everyday school life, our pupils are often faced with challenges, which seem insurmountable. These difficulties may be academic, emotional or social in origin and should ideally be resolved as quickly as possible. Students and pupils need to be supported in this process. Therefore, the social pedagogues and support teachers of the schools in Mamer and Capellen work closely together. The main task is to find, plan and implement solutions together. In this context, there are different methods, which are adapted to the school-child. An open and honest exchange between the class teacher, parents and other school partners is an important element for a positive and productive work.

ELCHEROTH Sylvie,
sylvie.elcheroth@mamerschoulen.lu

WELTER Véronique,
veronique.welter@mamerschoulen.lu

BOVÉ Julie,
julie.bove@mamerschoulen.lu

MARX Marcelle,
marx.marcelle@mamerschoulen.lu

WELTER Françoise,
francoise.welter@mamerschoulen.lu

RODRIGUEZ Silvia,
silvia.rodriquez@mamerschoulen.lu

FANDEL Mireille,
mireille.fandel@mamerschoulen.lu



*Support and socio-educational team.
Sylvie Elcheroth, Véronique Welter,
Julie Bové, Marcelle Marx,
Françoise Welter
abs.: Silvia Rodriguez, Mireille Fandel*

Pupil Support Team (ESEB) - Oppent Ouer

Regional Director : BETTINELLI David

Deputy Directors : KASS Jacques, HAUFFELS Jackie (ESEB), LEMMER Nadine

Contact Regional Management : Tél.: 247-55 110

E-mail : secretariat.mamer@men.lu

Support team for pupils with special educational needs (eseb) :

Tél.: 247-55 105

E-mail : ci.mamer@men.lu

New address :

Direction de l'enseignement fondamental – Région 2
2-4, parc d'activités Capellen (Building C) · L-8308 CAPELLEN



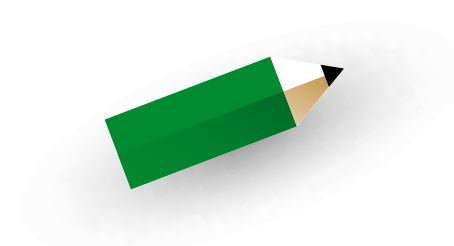
School libraries

The Kinneksbond Campus in Mamer and the Capellen Campus both have a school library. Pupils of both schools can borrow books from both libraries. There are more than 11.000 books, including 600 audio books. All books are listed on electronic media. The offer does not only include reading collections and theme books for children in cycles 2 to 4, but also for children aged 3 to 6 in cycle 1. In addition to German picture books, there are also books in French, Portuguese and English, so that parents can read stories to their children in their mother tongue. At www.mamerschoulen.lu pupils, parents and teachers can find out about the current offer. In view of the importance of parents in the libraries in Mamer and Capellen are also open outside school hours.

LIBRARY CAPELLEN



LIBRARY MAMER





Mamer Library

The Librarian:

Tom CARIER
 tom.carier@mamerschoulen.lu
 Tél.: 26 395-622

Opening times

Wednesday: 4.00 PM to 5.00 PM

Samedi: 13h45 à 16h15

Open on the following Saturdays from 1.45 PM to 4.15 PM before and during school holidays:

- Christmas holidays: 24 December 2022
- Easter holidays: 1 April 2023
- Summer holidays 2023: 15 July & 9 September 2023 (book returns)

All pupils (except those in cycles 4.2) may therefore borrow books during the summer holidays.



*Mamer Library:
Tom Carier*

Capellen Library

The Librarian:

Simone HEUSCHLING
 simone.heuschling@mamerschoulen.lu
 Christine SCHMIT
 christine.schmit@mamerschoulen.lu
 Tél.: 26 395-708

Opening times

Wednesday: 4.00 PM to 4.30 PM

The library remains closed during school holidays.



*Capellen Library:
Christine Schmit, Simone Heuschling*

Vivarium

Our Vivarium team offers all pupils in cycles 1 to 4 in the Municipality of Mamer workshops with exotic animals as well as other scientific workshops which encourage reflection and/or creation, experimentation and documentation (coding, computational thinking, bionics, photosynthesis, bee day, and so on ...).



Vivarium: Laurent Lepage, Gast Weydert, Pierre Bertinchamps



WEYDERT Gast
gast.weydert@mamerschoulen.lu
LEPAGE Laurent
laurent.lepage@mamerschoulen.lu
BERTINCHAMPS Pierre
pierre.bertinchamps@mamerschoulen.lu



Vivarium TV at
www.mamerschoulen.lu
facebook.com/vivariummamer

Physical education classes

Gymnastics classes take place in the sports hall of the school in Mamer/Capellen.

Swimming lessons take place in the swimming pools Les Thermes, Lycée Josy Barthel Mamer, Centre de Logopédie.

It is essential that children bring all the necessary equipment to enable them to participate actively in the lessons.

If, for health reasons, a student cannot participate in the sports class, we ask you to provide either the teacher or the person in charge of the class with a reasoned excuse in the form of an e-mail or letter. In accordance with the ministerial instructions in the study plan, the pupil must nevertheless be present at the lessons and pay attention to the teacher's explanations.

BOUCHÉ Martine
martine.bouche@mamerschoulen.lu

BOUR Christian
christian.bour@mamerschoulen.lu

HEUSCHLING Simone
simone.heuschling@mamerschoulen.lu

TAPPELLA Pascale
pascale.tapella@mamerschoulen.lu



Physical education: Simone Heuschling, Christian Bour, Pascale Tapella, Martine Bouché

Our school rules

Developed by teachers, parent representatives and the heads of the Day Care Centre.

General rules for **PARENTS**

We make sure that our child respects the school timetable;

In case of illness, we inform the teaching staff before 09.00 at the latest;

We teach our child to respect others and the elementary rules of good behaviour;

We support our child in his or her school work and create a favourable environment for his or her learning at home;

We ensure that our child has the necessary school materials for the class;

We check homework and materials;

We promote a positive approach to school;

We listen to the teachers and support them in their pedagogical approach;

We accept the school's disciplinary rules and, in the event of non-compliance, the sanctions decided upon;

We ensure that our child has a healthy snack.

General rules for **CHILDREN**

I am on time for the start of class;

I respect the instructions of the educators and teachers;

I do not soil the school buildings, the playground or the bus;

I do not intentionally do harm;

I do not damage anything;

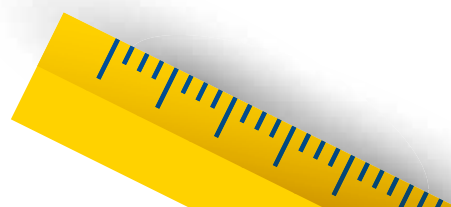
I bring healthy snacks and drinks;

I put my schoolbag away and take care of my clothes;

I leave electronic devices and dangerous objects at home;

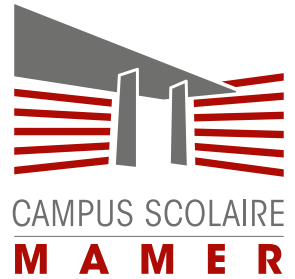
I am calm, I walk slowly, I do not play with a ball in school buildings or on the bus;

I do not play indoors without permission supervision.





Primary School Mamer



General information

Kinneksbond Campus

42, route d'Arlon · L-8210 Mamer

Tél.: 26 395 600

E-mail: president.mamer@mamerschoulen.lu

www.mamerschoulen.lu

School Committee

President:

Bob FEYEREISEN • Tél.: 691 32 35 16

E-mail: bob.feyereisen@mamerschoulen.lu

Deputy Presidents:

Natalie DARNÉ • Tél.: 691 32 35 12

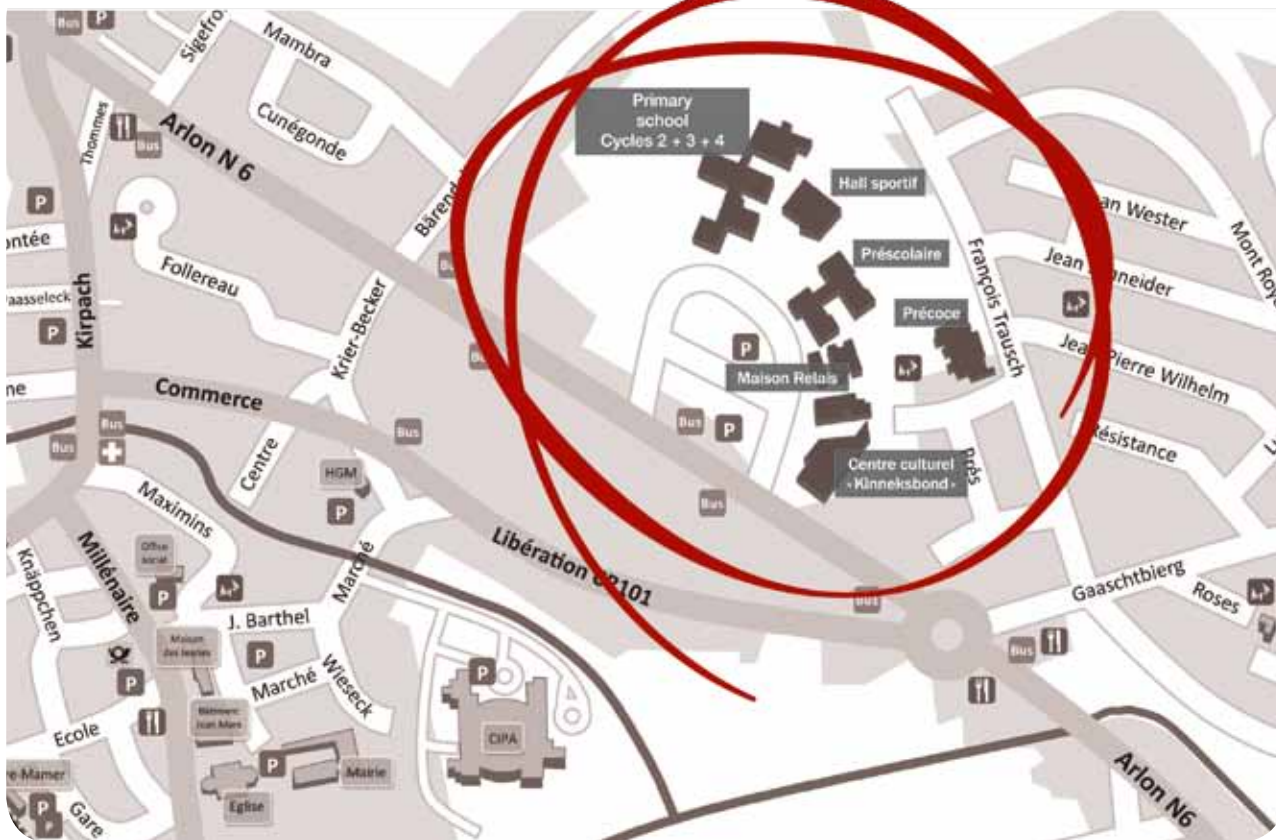
Pascale TAPPELLA • Tél.: 691 32 35 15

Members:

Julie BOVÉ; Stéphanie SCHMIT; Gast WEYDERT; Gilles BRAAS



Mamer School Committee: Gilles Braas, Stéphanie Schmit, Gast Weydert, Nathalie Darné, Bob Feyereisen, Pascale Tapella, Julie Bové



Janitors

Pascal MULLER • Tél.: 691 31 35 45

Dominique GIANNOTTE • Tél.: 621 82 32 46

E-mail: concierge-mamer@mamerschoulen.lu

Cycle coordinators

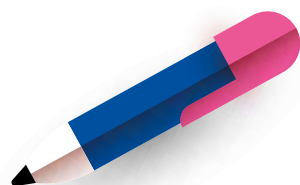
C1 early learning: Anne-Marie Eschette, anne-marie.eschette@mamerschoulen.lu

C1 pre-school: Laurence Cherry, laurence.cherry@mamerschoulen.lu

C2: Anouk Simon, anouk.simon@mamerschoulen.lu

C3: Luc Olinger, luc.olinger@mamerschoulen.lu

C4: Bianca Glodt, bianca.glodt@mamerschoulen.lu



School development plan

Shared Leadership

The school committee, in collaboration with the coordinators of the pedagogical teams of the Mamer Primary School, wishes to implement and develop the concept of „shared leadership“ to redefine leadership tasks and to achieve shared leadership by delegating tasks, competences and responsibilities in a targeted way.

Inter-cycle cooperation

Inter-cycle cooperation between children needs to be developed further. To this end, an assessment of the current situation is made in order to determine which levers can be used to improve cooperation.

Socio-educational centre

Under the guidance of our qualified educators, a competent and responsive network of partners is established. On the other hand, group and individual interviews are encouraged and conducted with the pupils.

Churermodell

The „Churermodell“ learning setting has already been implemented in many classes. Further developmental steps are needed in this area in order continuously to adapt the teaching to the needs of the pupils.

Audio-visual lexicon

The lexicon for literacy training of the cycle 2 classes will be both auditory and visual on the Mamerschoulen website. This should enable children to repeat words learned at home and memorise the correct pronunciation.

Support and differentiation

The offer of support and differentiation in the Mamer Schools has been redesigned and developed in recent years. The next steps in development are aimed at addressing various communication and exchange difficulties.

Formative assessment

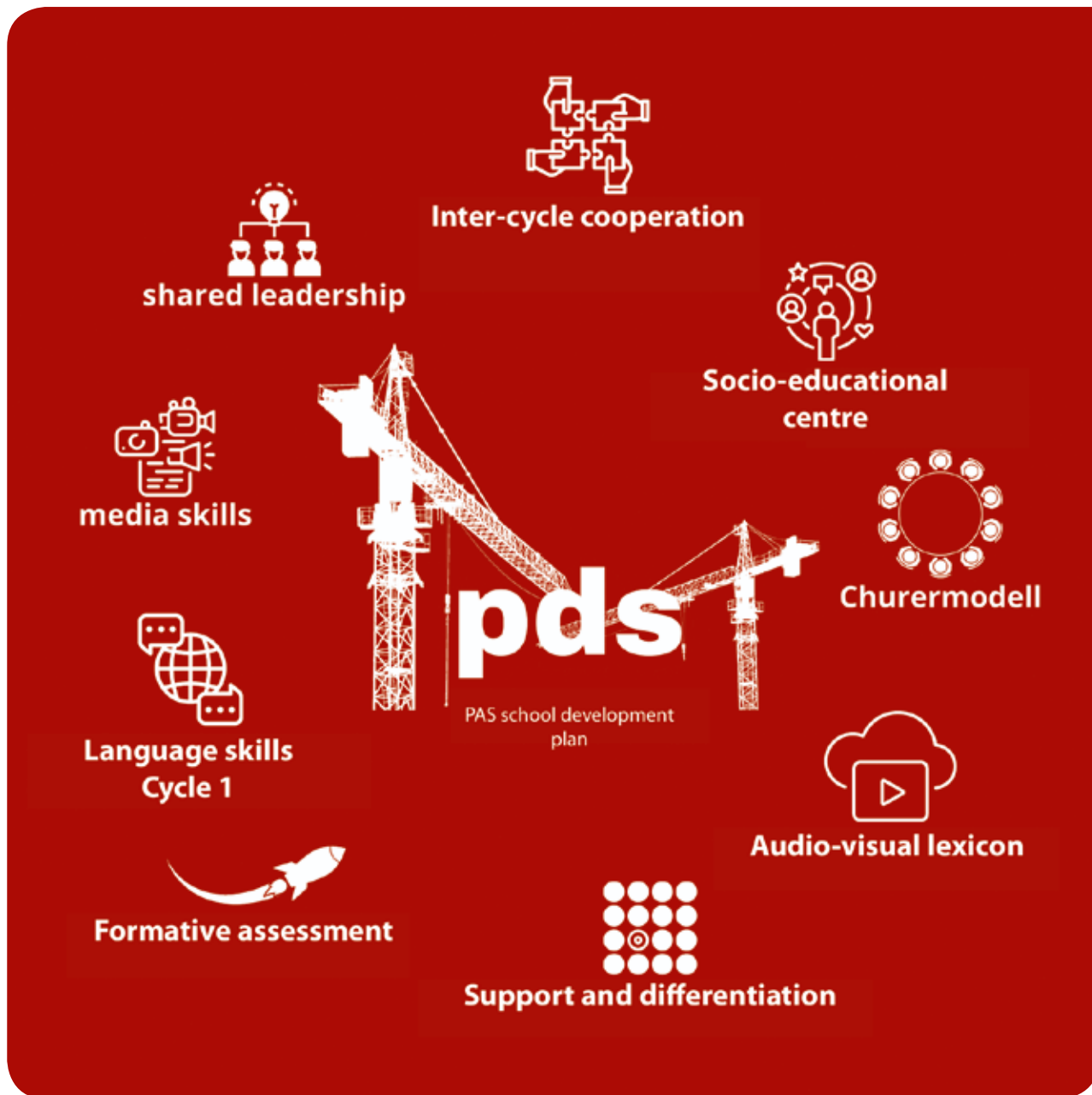
The theoretical concepts of formative performance assessment need to continue to be put into practice. Performance assessment needs to be made more tangible and understandable to all stakeholders.

Language skills Cycle 1

Cycle 1 teachers are working on a collection of materials, which can be made available to parents to help them and their children along the path to the Luxembourg language.

Media skills

Expanding the offer to promote the media skills of teachers is intended to deepen the knowledge of different teaching and learning applications. In the long term, the aim is to train experts within the college who, as multipliers, will pass on the knowledge acquired.



Teaching staff

Cycle 1 Early learning

Class names	Teachers	Educators	Telephone
MPcA	MORBY Anouk	Zahles Tanja	26 395 - 303
MPcB	ESCHETTE Anne-Marie	DAUPHIN Sandy / WEILER Yasmine	26 395 - 308
MPcC	BRAUN Nancy	WULFF Christian	26 395 - 307

Other teaching tasks in Cycle 1

WEIS Pamela

Contact for cycle teachers: cycle1precoce.mamer@mamerschoulen.lu



C1 Pre-school:

*Anne-Marie Eschette, Pamela Weis,
Tanja Zahles, Sandy Dauphin, Chris Wulf,
Nancy Braun*

abs. Anouk Morby

Cycle 1 Pre-school

Class names	Teachers	Telephone
MPsA	DARNÉ Natalie / CHERRY Laurence	26 395 - 406
MPsB	COLLÉ Liette	26 395 - 405
MPsC	FELLER Michèle	26 395 - 404
MPsD	ZEIEN Taiga	26 395 - 407
MPsE	PERL Michèle	26 395 - 402
MPsF	LEHNERS Audrey	26 395 - 403
MPsG	PEZZOLI Cristina	26 395 - 409
MPsH	DA SILVA Pinto Célia	26 395 - 408

Other teaching tasks in Cycle 1

CHERRY Laurence

Educator

KREMER Claudine

Contact for cycle teachers: cycle1.mamer@mamerschoulen.lu





C1:

*Célia Da Silva Pinto,
Patty Scheer, Pamela Weis,
Michèle Feller, Natalie Darné,
Laurence Cherry, Liette Collé,
Michèle Perl, Taiga Zeien,
Cristina Pezzoli*

abs.: Audrey Lehnrs

Cycle 2

Class names	Teachers	Telephone
M2.1A	CARIER Tom	26 395 - 612
M2.1B	FELLER Carole	26 395 - 616
M2.1C	SIMON Anouk / BRUCHER Anne	26 395 - 614
M2.1D	SEIWERATH Emmanuelle	26 395 - 615
M2.2A	SCHMIT Stéphanie / COLLÉ Corinne	26 395 - 608
M2.2B	WITRY Catherine / CHERET Aurélie	26 395 - 645
M2.2C	JUNGBLUTH Eric	26 395 - 606
M2.2D	RASIC Frank	26 395 - 609

Contact for cycle teachers: cycle2.mamer@mamerschoulen.lu



C2:

*Anouk Simon, Tom Carier,
Aurélie Cheret, Anne Brucher,
Ketty Witry, Frank Rasic,
Carole Feller, Stéphanie
Schmit, Corinne Collé,
Eric Jungbluth*

abs.: Emmanuelle Seiwerrath



Cycle 3

Class names	Teachers	Telephone
M3.1A	LEPAGE Laurent	26 395 - 631
M3.1B	BRAAS Gilles	26 395 - 632
M3.1C	MEIS Marthe	26 395 - 633
M3.1D	LOURY Alexandre	26 395 - 629
M3.2A	MARX Marcelle / FRATONI Nathalie	26 395 - 628
M3.1B	OLINGER Luc	26 395 - 623
M3.2C	SERVAIS Daisy	26 395 - 625
M3.2D	CASOLI Daniel	26 395 - 626
M3.2E	ERPELDING Jessica	26 395 - 655

Contact for cycle teachers: cycle3.mamer@mamerschoulen.lu



C3:

Gilles Braas, Laurent Lepage, Marthe Meis, Dan Casoli, Alex Loury, Luc Olinger, Daisy Servais, Marcelle Marx, Jessica Erpelding

Cycle 4

Class names	Teachers	Telephone
M4.1A	GREIVELDINGER Claude	26 395 - 663
M4.1B	GLODT Bianca	26 395 - 658
M4.1C	KAUTH Carole	26 395 - 665
M4.1D	BERTINCHAMPS Pierre	26 395 - 660
M4.2A	FEYEREISEN Bob / REGENWETTER Roy	26 395 - 656
M4.2B	WEYDERT Gast / LEMMER Annick	26 395 - 661
M4.2C	DECKER Julie	26 395 - 648
M4.2D	SAYED Amira /FABER Joy	26 395 - 653
M4.2E	SERVAIS Jeff	26 395 - 650

Contact for cycle teachers: cycle4.mamer@mamerschoulen.lu



C4:

Michèle Bleser, Pierre Bertinchamps, Jeff Servais, Joé Dolisy, Roy Regenwetter, Gast Weydert, Annick Lemmer, Carole Kauth, Amira Sayed, Bianca Glodt, Bob Feyereisen, Julie Decker

I-EBS

BOVÉ Julie	26 395 - 651
------------	--------------

Reception of newcomers

BREDEN Tanja	26 395 - 652
MEYER Cathy	26 395 - 647

Other teaching tasks in Cycles 2 to 4

BLESER Michèle

BRUCHER Anne

CHERET Aurélie

DE SA FERNANDES Marlène

ELCHEROTH Sylvie

FABER Joy

FRATONI Nathalie

GLESENER Gilles

LEMMER Annick

MARX Marcelle

REGENWETTER Roy

REUTER Danièle

STILETTO Mike

Physical education

BOUCHÉ Martine	26 395 - 501
----------------	--------------

BOUR Christian	26 395 - 501
----------------	--------------

TAPELLA Pascale	26 395 - 501
-----------------	--------------

School transport and Pédibus

School transport

- School transport is exclusively aimed at children who attend pre-school or primary education.
- The use of school transport requires prior registration with the municipal school service.

Pédibus

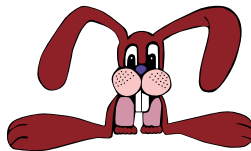
- The Pédibus is a system of accompanying children on foot to school, under the guidance of escorts hired by the Municipality. The children wait for the Pédibus at the agreed meeting point (stop) and then walk with it to school. On the Pédibus route the „Schoulwee” logo is marked on the ground, and at the bus stops the Pédibus logo is displayed.

School bus

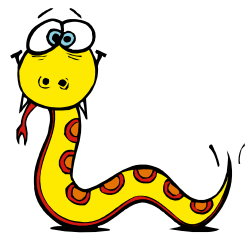
- Our school buses take pupils to and from school at set times. The different routes are clearly marked with animal images. This means that there is no confusion at the bus stops and the risk of getting on the wrong bus is minimal. An adult accompanies all bus trips.



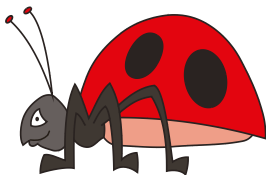
MAMER 1



MAMER 2



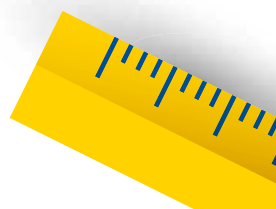
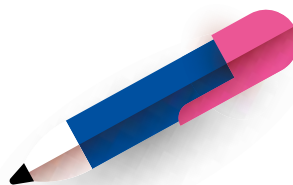
MAMER 3



MAMER 4



MAMER 5



Pédibus Mamer



Andrea
Coufalova



Marie Valero
Weibel-Muller



Tina Prumbaum



Aurélie Boisson



Jessica Dunkel



Tanja Zahles



Chris Wulff



Claudine Kremer



Sandy Dauphin



Alessandra Larosa



Myriam Peters



Céline Schmidt



Eleonora Alvanou



Laura Pasquarelli

Bus Mamer



MAMER 1
Dagmar
Lehmann



MAMER 2
Malou
Klein-Kremer



MAMER 3
Astrid
Krause



MAMER 4
Gisèle
Colling



MAMER 5
Donatella
Monaco

PEDIBUS routes

SCHOOL YEAR 2022-2023

PEDIBUS MAMER

Routing of the Pedibus on the sidewalk
 Pedestrian crossing on the Pedibus route
 Bus stop pedibus

MAMER I

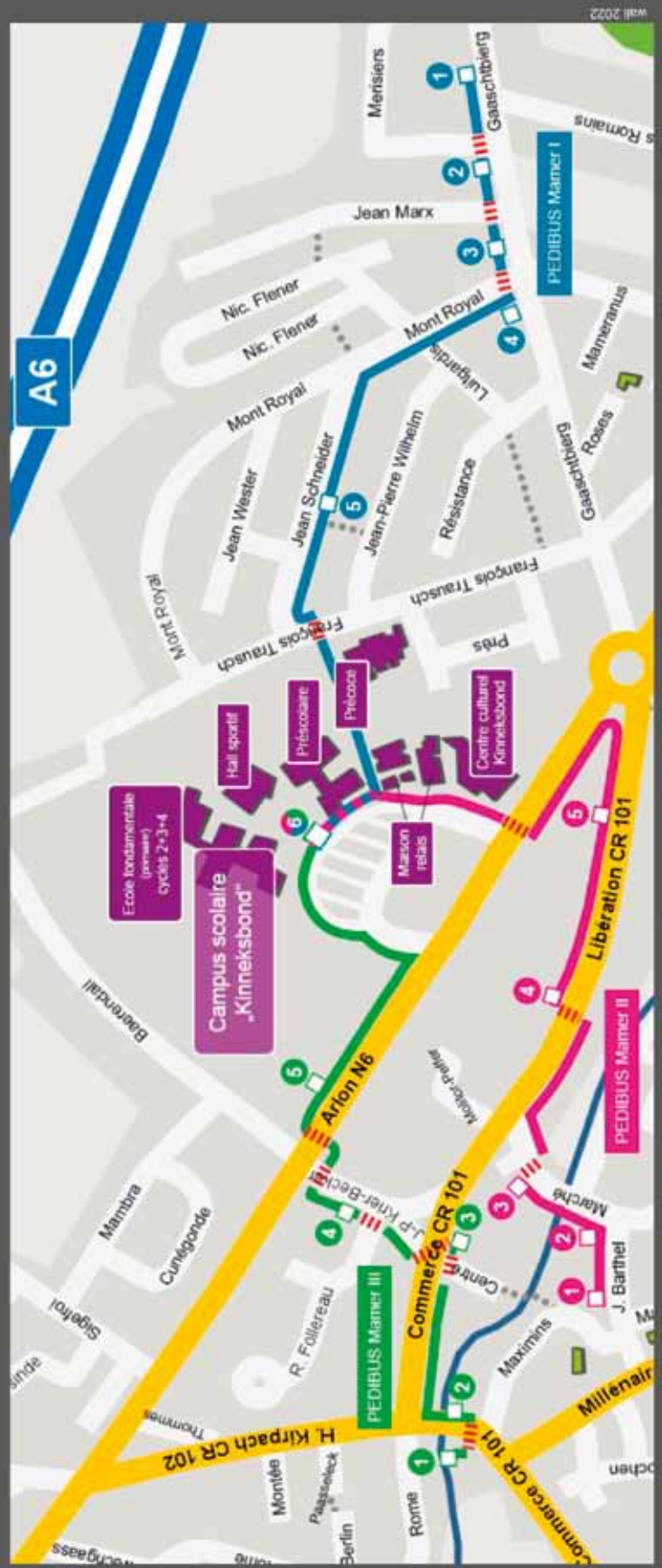
Bus route	Outward journey	Return
1	07h35 13h40	12h20 16h20
2	07h37 13h42	12h18 16h18
3	07h39 13h44	12h16 16h16
4	07h41 13h46	12h14 16h14
5	07h46 13h51	12h09 16h09
6	07h50 13h55	12h05 16h05

MAMER II

Bus route	Outward journey	Return
1	07h35 13h40	12h18 16h18
2	07h36 13h41	12h17 16h17
3	07h38 13h43	12h15 16h15
4	07h40 13h46	12h13 16h13
5	07h42 13h48	12h11 16h11
6	07h48 13h53	12h05 16h05

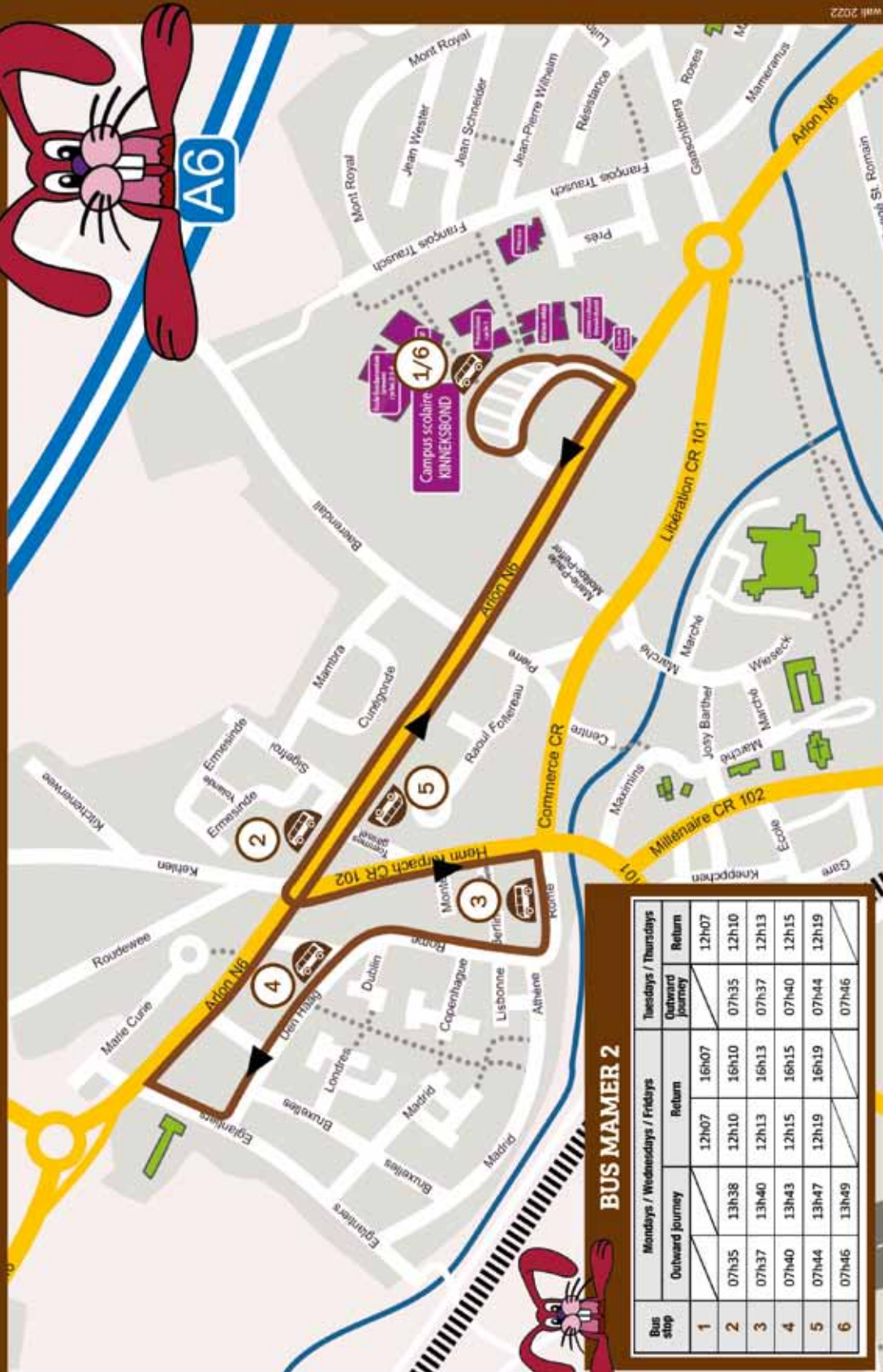
MAMER III

Bus route	Outward journey	Return
1	07h35 13h40	12h20 16h20
2	07h36 13h41	12h19 16h19
3	07h39 13h44	12h16 16h16
4	07h42 13h47	12h13 16h13
5	07h45 13h50	12h10 16h10
6	07h50 13h55	12h05 16h05



BUS MAMER 2 SCHOOL YEAR 2022-2023

Bus stop  Bus route 



BUS MAMER 2

Bus stop	Mondays / Wednesdays / Fridays		Tuesdays / Thursdays	
	Outward journey	Return	Outward journey	Return
1		12h07		12h07
2	07h35	13h38	07h35	12h10
3	07h37	13h40	07h37	12h13
4	07h40	13h43	07h40	12h15
5	07h44	13h47	07h44	12h19
6	07h46	13h49	07h46	



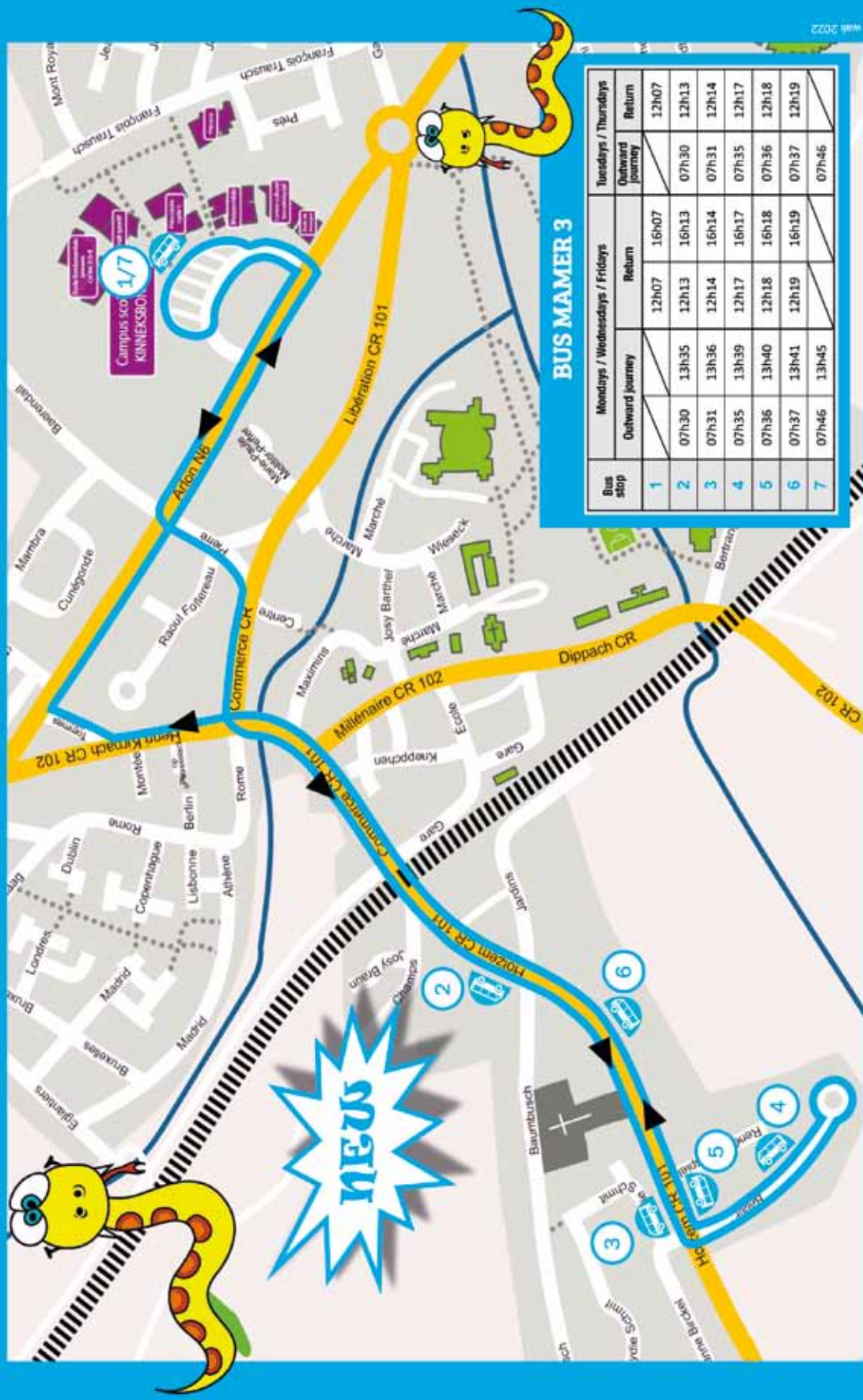
SCHOOL YEAR 2022-2023

BUS MAMER 3

— Bus route



Bus stop




BUS MAMER 3

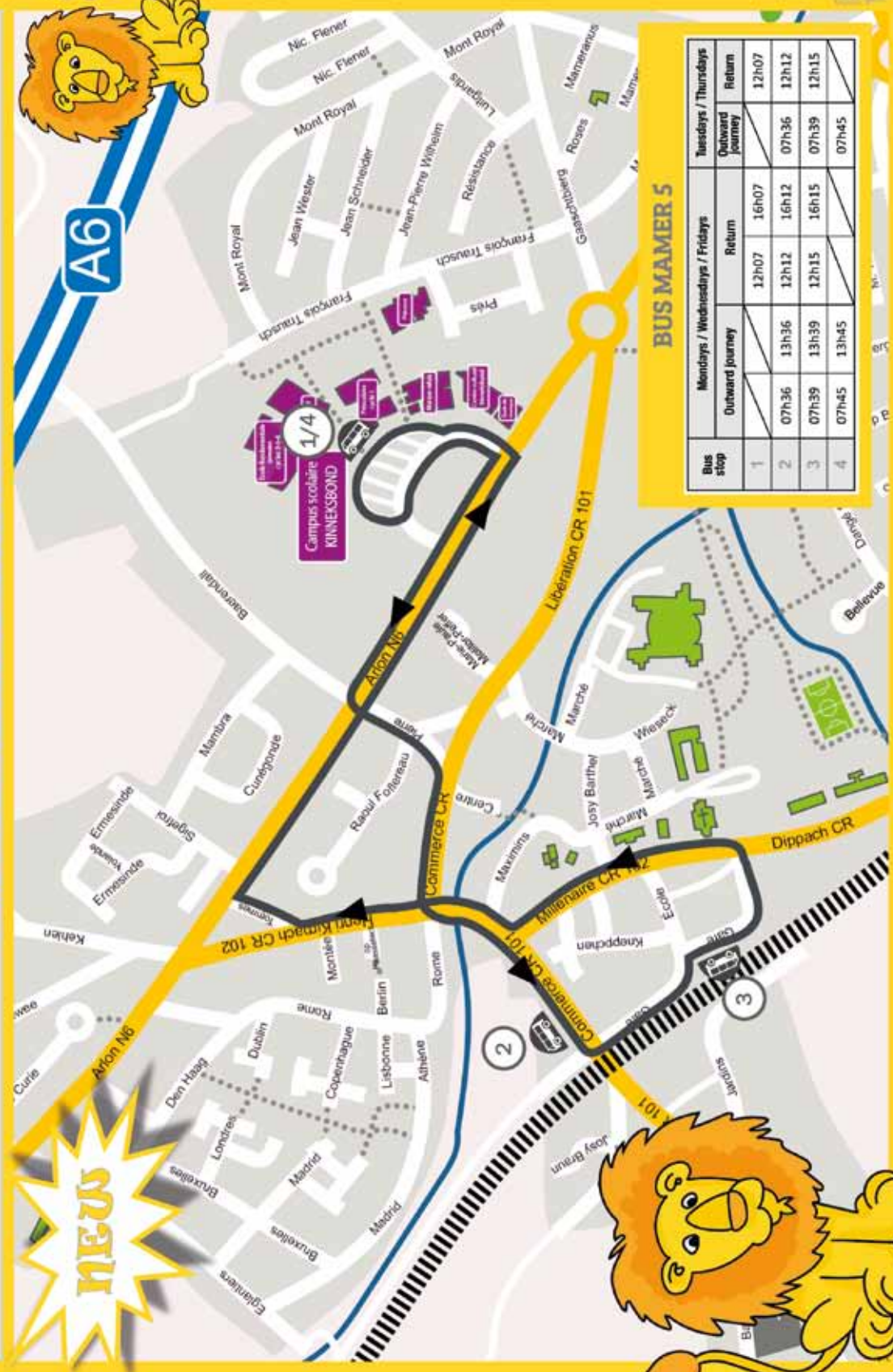
Bus stop	Mondays / Wednesdays / Fridays		Tuesdays / Thursdays	
	Outward journey	Return	Outward journey	Return
1		12h07	16h07	12h07
2	07h30	12h13	16h13	07h30
3	07h31	12h14	16h14	07h31
4	07h35	12h17	16h17	07h35
5	07h36	12h18	16h18	07h36
6	07h37	12h19	16h19	07h37
7	07h46	13h45		07h46

BUS MAMER 5

SCHOOL YEAR 2022-2023




Bus route
 Bus stop



BUS MAMER 5

Bus stop	Mondays / Wednesdays / Fridays		Tuesdays / Thursdays	
	Outward journey	Return	Outward journey	Return
1		12h07		12h07
2	07h36	12h12	16h12	12h12
3	07h39	12h15	16h15	12h15
4	07h45	12h45	16h45	12h45



Representatives of the parents of pupils (RePaMa)



The REPAMA (Representative of the parents of Mamer Schools pupils) is together with the school committee the parents' contact person for the primary school in Mamer.

What are its tasks?

- U- One of its tasks is to draw up an opinion on the school development plan (SDP).
- Each year, its opinion is sought on the school organisation.
- It defends the interests of parents and their children.
- In case of conflict between pupils/parents and the school, REPAMA members can act as mediators.
- It is an advisory body for the school authorities and for the parents.
- Two members represent REPAMA on the Municipality's School Committee.
- The Parents' Representative Committee has to be renewed every three years. By beco-

ming a member of this body, parents have the opportunity to cooperate in the elaboration of the School Development Plan (SDP) of the school and to work together with the teachers and the School Committee. For a school community can only develop if there is active and productive interaction between all actors in the school. This includes the teachers, the parent community, the school committee as well as all pupils.

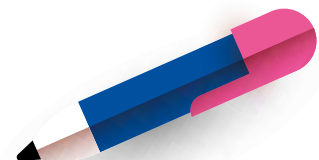
On 24 October 2022, the school in Mamer will hold elections for a new Parents' Representative Committee. These elections will be followed by a conference of the Janusz Korczak Parents' School on the topic of „Léieren léieren”. Here, parents will receive tips on how to facilitate and support their children's learning at home.

Members:

BERTEMES ép MAUSEN Alexandra
BONDAR Irina
CAGADIDID Curri
DELAGARDELLE Ben
FELIX Sandra
GRUNOW Dunja
KAYSER Franky
KOLLWELTER ép WEIS Isabelle
PAPADOPOULOU Eleonora



Contact : repama@mammerschoulen.lu



Internet & Social Media

In order to present the daily school life of the pupils, the schools of Mamer regularly update the website www.mamerschoulen.lu.



Here you will find a great deal of additional and necessary information to understand our life at school.

The **cycle 2** team has made the basic vocabulary (Lese- und Schreibwortschatz (LST)) available on their class pages. Pupils and parents alike can read and listen to the words to be learned in order to expand their German vocabulary, practise pronunciation and have fun repeating short phrases related to the context of the German lessons.



	LST zum Anhören und Üben 2.1.
Lesen	LST 1 A, a
Schreiben	LST 2 C, v
Lesen	LST 3 D, a
Schreiben	LST 4 B, w, Wiese, Kette
Lesen	LST 5 N, n
Schreiben	LST 6 E, e, Eide
Lesen	LST 7 D, H
Schreiben	LST 8 K, f
Lesen	LST 9 O, u
Schreiben	LST 10 W, w
Lesen	LST 11 U, u
Schreiben	LST 12 F, f
Lesen	LST 13 K, k
Schreiben	LST 14 A, a, au
	LST zum Anhören und Üben 2.2.
Lesen	LST 15 G, g
Schreiben	LST 16 L, l
Lesen	LST 17 Z, z
Schreiben	LST 18 T, t, U, u, u, u
Lesen	LST 19 F, f
Schreiben	LST 20 H, h
Lesen	LST 21 K, k
Schreiben	LST 22 W, w
Lesen	LST 23 U, u, u, u, u, u, u, u
Schreiben	LST 24 A, a, a, a, a, a, a, a
Lesen	LST 25 G, g
Schreiben	LST 26 T, t, t, t, t, t, t, t
Lesen	LST 27 F, f
Schreiben	LST 28 H, h
Lesen	LST 29 K, k
Schreiben	LST 30 W, w
Lesen	LST 31 U, u
Schreiben	LST 32 F, f

Mamer Primary School regularly presents and documents the activities of the students on Instagram in order to give a small overview of its activities at school (mamerschoul).



Smartwatches

We would like to remind you that students are not allowed to have mobile phones (mobile phones and smartphones) switched on either during school hours or at the Day Care Centre.

The same applies to all smartwatches.

The teacher reserves the right to take charge of such a device in case of non-compliance with this rule and to turn it off.







Capellen Primary School



Informations générales

Capellen School Campus

45, route d'Arlon

L-8310 Capellen

Tél.: 26 395 701

E-mail: president.capellen@mamerschoulen.lu

www.mamerschoulen.lu

School committee

President:

Maryse BADEN • Tél.: 691 31 35 28

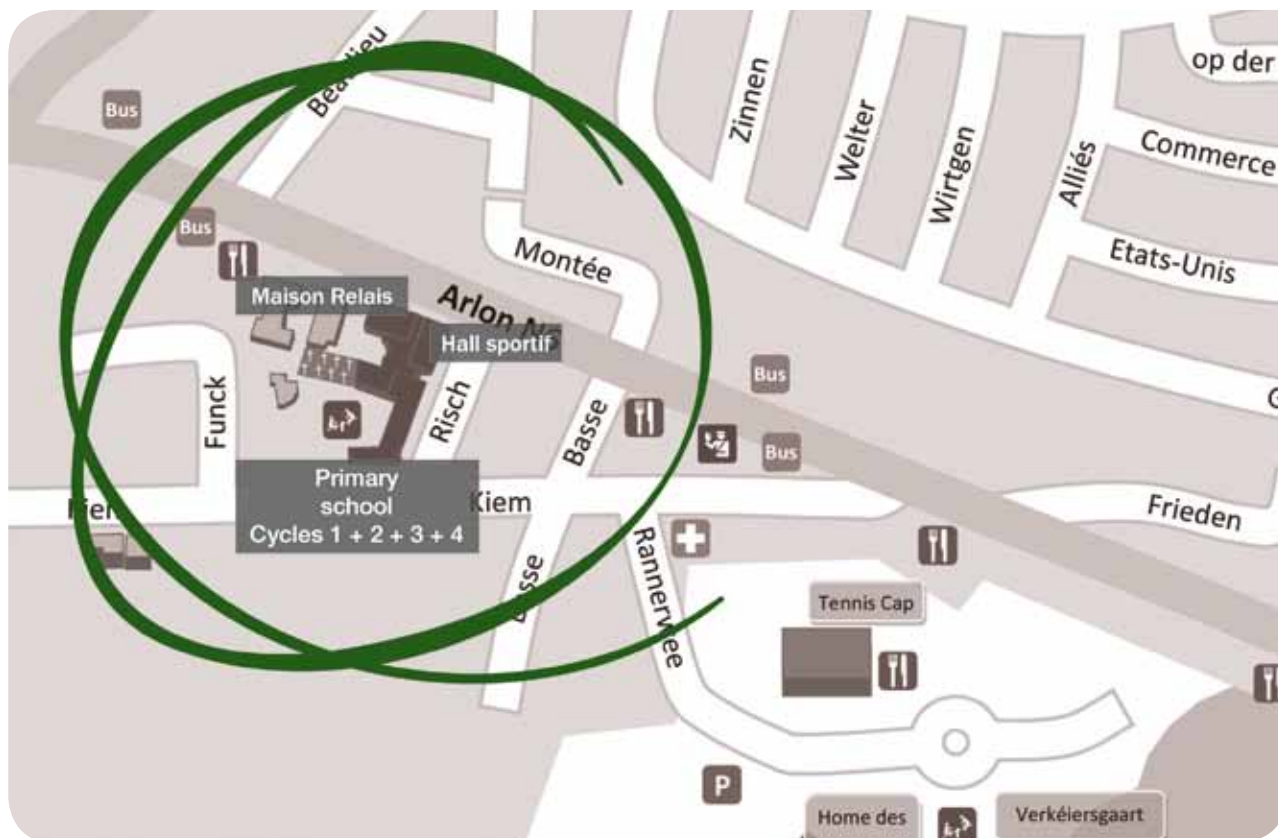
E-mail: maryse.baden@mamerschoulen.lu

Members:

Giovanna GIANNINI; Leslie PEZZOLI



Capellen School Committee: Leslie Pezzoli, Maryse Baden, Giovanna Giannini



Cycle coordinators

- C1 early learning: Weydert Françoise
E-mail: francois.weydert@mamerschoulen.lu
- C1 pre-school: Straus Annick
E-mail: annick.straus@mamerschoulen.lu
- C2: Lepage Guy
E-mail: guy.lepage@mamerschoulen.lu
- C3: Giannini Giovanna
E-mail: giovanna.giannini@mamerschoulen.lu
- C4: Hein Joëlle
E-mail: joelle.hein@mamerschoulen.lu

Janitors

- Gilles GOEHLER • Tél.: 691 31 35 40
Luc STEINMETZ • Tél.: 691 31 35 71
E-mail: concierge-cap@mamerschoulen.lu



School development Plan (PDS II)

To proactively develop/promote wellbeing at Capellen School in the long term by 2024 and embed it in everyday life through various activities with partners.

We integrate and evaluate different cycle-specific methods/concepts to improve the classroom and school climate in our daily school life.

Building non-violent and solution-oriented communication.

- C1: learning to live together
- C2: learning to understand others
- C3: learning to communicate well
- C4: learning to act correctly

Teachers: Teambuilding

Together with the school partners' working group, the aim is to set out new daily rules for parents, pupils and teachers.

We build a targeted cooperation between the three school partners by defining common rules and obligations and implementing them through other activities in everyday school life.

By 2024, Capellen School will have developed and implemented a consistent and coherent differentiation concept, which builds on each other from cycle 1 to cycle 4.

We define the cycle-specific basic skills and the corresponding assessment methods, record them in writing and live them in everyday school life.

We define the different areas of support and determine the corresponding teaching materials for the different types of learners.

- How is reading constructed?
- How is mathematics learned?
- How is writing constructed?
- What materials from the school can be used



Teaching staff



Cycle 1 Early-learning

Names Classes	Teachers	Educators	Telephone
CPcA	WEYDERT Françoise	MERGEN Sandra/WELBES Stéphanie	26 395 - 732
CPcB	EVEN Marie	HOSCHEID Sandy	26 395 - 733

Contact for cycle teachers: cycle1precoce.capellen@mamerschoulen.lu

Cycle 1 Pre-school

Names Classes	Teachers	Telephone
CPsA	STRAUS Annick	26 395 - 742
CPsB	PEZZOLI Leslie	26 395 - 743
CPsC	NEUMANN Liz	26 395 - 740
CPsD	LANNERS Caroline	26 395 - 739

Other teaching tasks in Cycle 1

surnuméraire	SCHOLTES Nathalie	
--------------	-------------------	--

Contact for cycle teachers: cycle1.capellen@mamerschoulen.lu

Educator

	KREMER Claudine	
--	-----------------	--



C1 Capellen:

Leslie Pezzoli, Sandy Hoscheid, Annick Straus, Liz Neumann, Sandra Mergen, Marie Even, Françoise Weydert, Caroline Lanners.

abs.: Stéphanie Welbes

Cycle 2

Names Classes	Teachers	Telephone
C2.1A	LEPAGE Guy	26 395 - 704
C2.1B	WOJSISCHOWSKI Serge / NEIENS Gilles	26 395 - 702
C2.2A	JEMMING Sandy / BINTENER Stéphanie	26 395 - 705
C2.2B	DZIADEK Anja	26 395 - 707

Other teaching tasks in Cycle 2

surnuméraire	SCHMIT Christine	
	NEIENS Gilles	
	MAY Nadine	
	HEUSCHLING Simone	
	DIEDERICH Monique	

Contact for cycle teachers: cycle2.capellen@mamerschoulen.lu

**C2 Capellen:**

*Monique Diederich,
Serge Wojsischowski,
Gilles Neiens, Christine Schmit,
Guy Lepage, Stéphanie Bintener,
Anja Dziadek*

Cycle 3

Names Classes	Teachers	Telephone
C3.1A	SOMMAVILLA Carole	26 395 - 721
C3.1B	GIANNINI Giovanna	26 395 - 719
C3.2A	BADEN Maryse / DOCKENDORF Elisabeth	26 395 - 723

Other teaching tasks in Cycle 3

surnuméraire	METZ Jil	
	WOLFF Michel	
	MAY Nadine	
	HEUSCHLING Simone	

Contact for cycle teachers: cycle3.capellen@mamerschoulen.lu

**C3 Capellen:**

*Lisy Dockendorf, Maryse Baden,
Giovanna Giannini, Michel
Wolff, Carole Sommavilla
abs.: Jil Metz*

Cycle 4

Names Classes	Teachers	Telephone
C4.1A	HEIN Joëlle	26 395 - 714
C4.1B	KURT Lauréanne	26 395 - 713
C4.2A	DENNEWALD Martine	26 395 - 716 / - 718

Other teaching tasks in Cycle 4

surnuméraire	HEUSCHLING Simone	
	JEAN Elena	
	DOLISY Jill	

Contact for cycle teachers: cycle4.capellen@mamerschoulen.lu

**C4 Capellen:**

*Elena Jean, Lauréanne Kurt,
Joëlle Hein, Martine Dennewald,
Jill Dolisy*

Reception for new arrivals

MAY Nadine	nadine.may@mamerschoulen.lu
------------	--

I-EBS

FANDEL Mireille	mireille.fandel@mamerschoulen.lu
-----------------	--

School transport and Pédibus

School transport

- The school transport service is only available to children in pre-school or basic education.
- The use of school transport requires prior registration with the municipal school service.

Pédibus

- The Pédibus is a system of accompanying children on foot to school, led by the Municipality. The children wait for the Pédibus at the agreed meeting point (stop) and walk with it to school. On the Pédibus route the „Schoulwee” logo is marked on the ground and at the bus stops.

School bus

- Our school buses take pupils to and from school at set times. The different routes are clearly marked with animal images. This means that there is no confusion at the bus stops and the risk of getting on the wrong bus is minimal. An adult accompanies all bus trips.



CAPELLEN 1



HOLZEM 1

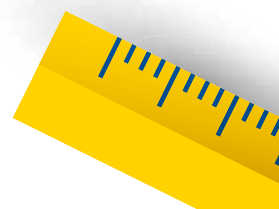
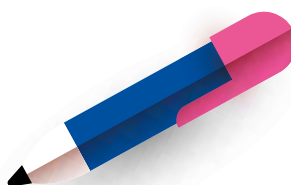
Bus Capellen - Holzem



CAPELLEN 1
Anne-Marie
Nunes



HOLZEM
Mireille
Sassel



Pédibus Capellen



Andrea Coufalova



Marie Valero
Weibel-Muller



Tina Prumbaum



Aurélie Boisson



Jessica Dunkel



Sandy Hoscheid



Sandra Mergen



Stéphanie Welbes



Alessandra Larosa



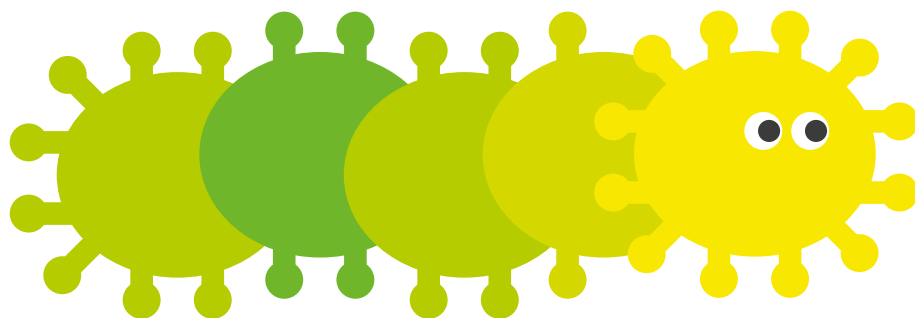
Céline Schmidt



Eleonora Alvanou



Laura Pasquarelli



SCHOOL YEAR 2022-2023

PEDIBUS CAPELLEN

 Routing of the Pedibus on the sidewalk
 Bus stop pedibus
 Pedestrian crossing on the Pedibus route

CAPELLEN I

Bus route	Outward journey	Return	Outward journey	Return
1	07h35	12h17	13h40	16h17
2	07h37	12h15	13h42	16h15
3	07h39	12h13	13h44	16h13
4	07h41	12h11	13h46	16h11
5	07h47	12h05	13h52	16h05
6	07h53	12h02	13h58	16h02

CAPELLEN II

Bus route	Outward journey	Return	Outward journey	Return
1	07h44	12h49	13h49	16h10
2	07h45	12h50	13h50	16h09
3	07h46	12h51	13h51	16h08
4	07h47	12h52	13h52	16h07
5	07h52	12h57	13h57	16h02



with 2022

BUS CAPELLEN 1

SCHOOL YEAR 2022-2023

— Bus route
 Bus stop



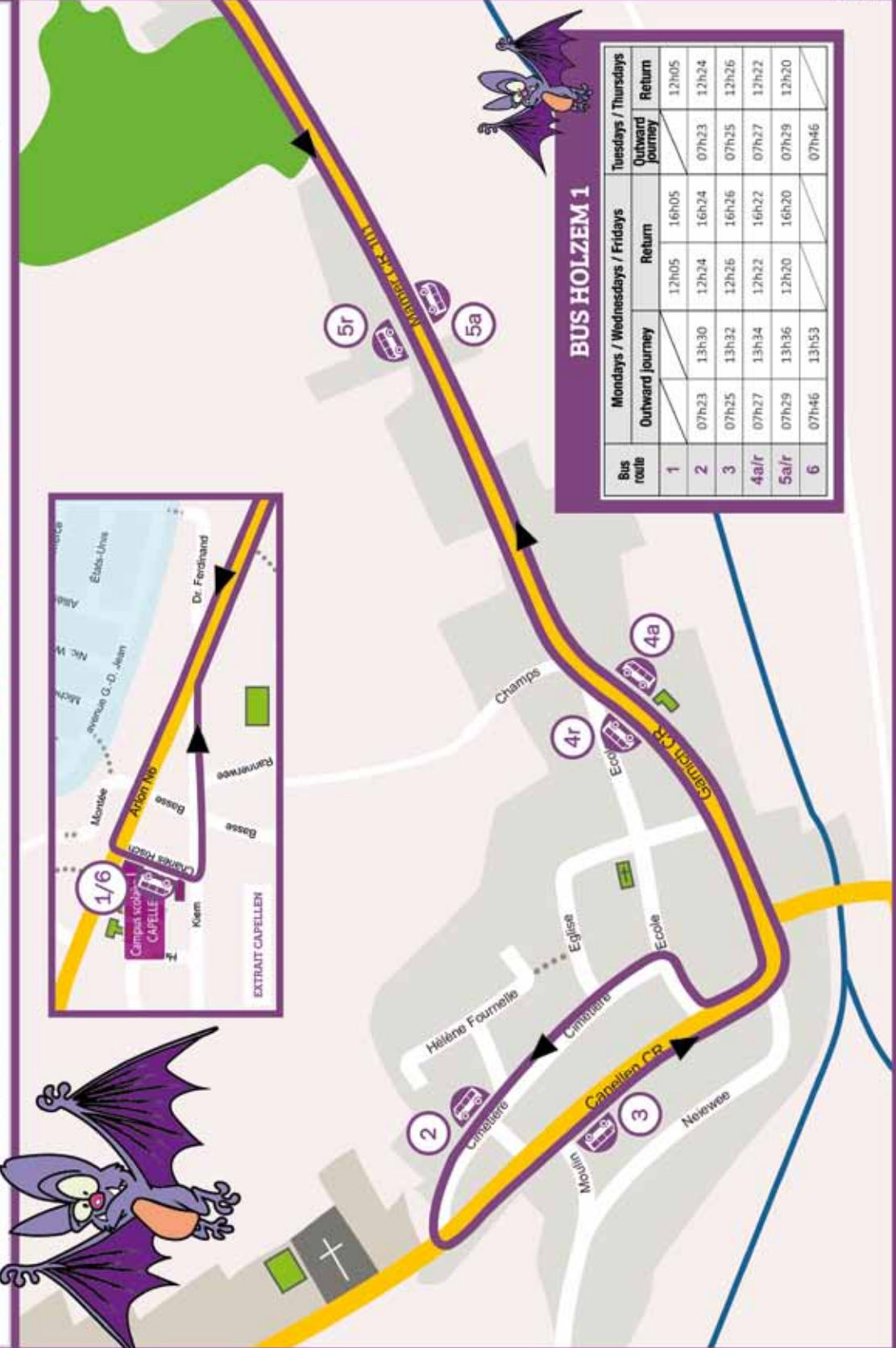
BUS CAPELLEN 1

Bus route	Mondays / Wednesdays / Fridays		Tuesdays / Thursdays	
	Outward journey	Return	Outward journey	Return
1		12h05		12h05
2	07h26	13h33	07h26	12h17
3	07h28	13h35	07h28	12h19
4	07h40	13h47	07h40	12h10
5	07h42	13h49	07h42	12h12
6	07h43	13h50	07h43	12h13
7	07h46	13h53	07h46	

BUS HOLZEM 1

SCHOOL YEAR 2022-2023

Bus stop  Bus route 



BUS HOLZEM 1

Bus route	Mondays / Wednesdays / Fridays		Tuesdays / Thursdays	
	Outward journey	Return	Outward journey	Return
1		12h05	16h05	12h05
2	07h23	13h30	12h24	16h24
3	07h25	13h32	12h26	16h26
4a/r	07h27	13h34	12h22	16h22
5a/r	07h29	13h36	12h20	16h20
6	07h46	13h53		07h46

Representation of parents of pupils (RePaCH)

The REPACH (Representative of the parents of Capellen-Holzem pupils) is together with the school committee the parents' contact person for the primary school in Mamer.

What are its tasks??

- One of its tasks is to draw up an opinion on the school development plan (PDS).
- Each year, its opinion is sought on the school organisation.
- It defends the interests of parents and their children.
- In case of conflict between pupils/parents and the school, REPACH members can act as mediators.
- It is an advisory body for the school authorities and for the parents.
- Two members represent REPACH on the Municipality's School Committee.

The Parents' Representative Committee has to be renewed every three years. By becoming a member of this body, parents have the opportunity to cooperate in the elaboration of the School Development Plan (PDS) of the school and to work together with the teachers and the School Committee. For a school community can only develop if there is active and productive interaction between all actors in the school. This includes the teachers, the parent community, the school committee as well as all pupils.

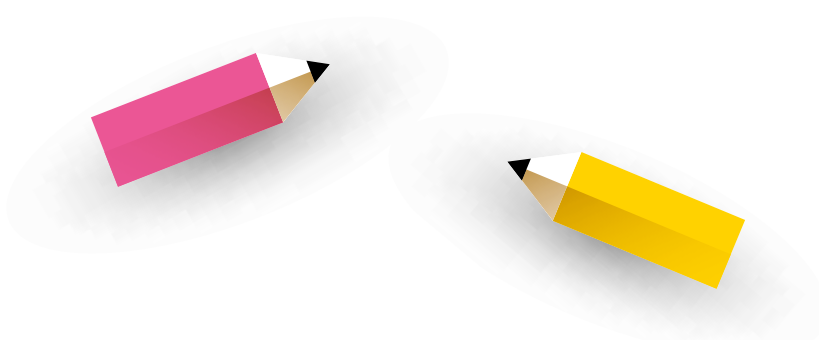
On 24 October 2022, at 18.30, the school in Mamer will hold elections for a new Parents' Representative Committee.

Members

TARANTINI Vanessa

WATRY Yves

Contact : repach@mamerschoulen.lu



Day Care Centre

Importance of the Day Care Centre

For children:

- To provide quality educational support for children;
- A pleasant atmosphere, fun, pleasure;
- Well-being, feeling accepted and respected;
- The right to be a child;
- A safe and varied environment;
- A place to develop interests and talents;
- A place to find friends;
- Homework support;
- A variety of leisure activities (sports, crafts, games, music, nature);
- The possibility to make choices (games, friends, activities, room layout, etc.);
- The right to express oneself;
- Healthy food

For the family:

- Cooperation with parents;
- Educational partnership;

- Regular contact with educational staff;
- Support and advice on educational issues;
- Meeting between parents;
- Flexibility;
- Information.

Enrolment

Enrolments at the Day Care Centre will be made exclusively on the basis of predefined time slots. Invoicing will be by whole modules. Enrolment by modules allows the following procedures:

- Annual enrolment;
- Month-by-month enrolment;
- Occasional enrolment.

The financial contribution is paid through the „childcare service voucher” system: parents who wish to benefit from the service voucher system must apply to the municipal authority of their residence. A personalised membership card is issued to them. Membership is free of charge and is valid for a period of twelve months.



You can find more details about the service voucher system at:

- www.mamerschoulen.lu
- www.staarkanner.lu
- www.arcus.lu

or directly from the Day Care Centres in Mamer and Capellen.

The „Biergerzenter“ of our Municipality will be happy to answer any further questions you may have concerning the formalities for joining the service voucher scheme:

- Tel: 31 00 31-48

To benefit from an additional reduction taking into account the income situation of the household, please bring the following documents:

- If you file a tax return: the most recent tax return in your possession

- If you do not file a tax return: the income certificate issued by the Direct Tax Administration (Administration des contributions directes), attesting to the fact that you are not required to file a tax return, and the most recent annual salary, pension or unemployment certificate or a recent income certificate issued by the Joint Social Security Centre for the Self-Employed
- If you are not taxable under Luxembourg law or international agreements: the last three payslips
- If you are receiving maintenance for a child living in the household: divorce decree, summary order, etc.

In the absence of such details, the operator must invoice the maximum amounts.

Day Care Centre Kinneksbond Mamer

42, route d'Arlon
L-8210 MAMER

Head: MICHAELIS Elisabeth
mr.mamer@arcus.lu

Tél.: 26 395-200 ou 691 323 500

Opening times:

Monday, Wednesday and Friday: 7.00 AM to 8.00 AM / 11.30 AM to 2.00 PM / 4.00 PM to 7.00 PM

Tuesday and Thursday: 7.00 AM to 8.00 AM / 11.30 AM to 7.00 PM

The Day-Care Centre also operates during the school holidays from 7.00 AM to 7.00 PM. Between Christmas and New Year's Eve the Day-Care Centre will remain closed, as well as on legal holidays.

Day Care Centre Capellen

45, route d'Arlon
L-8310 CAPELLEN

Head: MENZEL Diana
mr.capellen@arcus.lu

Tél.: 26395-800

Opening times:

Monday, Wednesday and Friday: 7.00 AM to 8.00 AM / 11.30 AM to 2.00 PM / 4.00 PM to 7.00 PM

Tuesday and Thursday: 7.00 AM to 8.00 AM / 11.30 AM to 7.00 PM

The Day-Care Centre also operates during the school holidays from 7.00 AM to 7.00 PM. Between Christmas and New Year's Eve the Day-Care Centre will remain closed, as well as on legal holidays.



LE GOUVERNEMENT
DU GRAND-DUCHÉ DE LUXEMBOURG
Ministère de l'Éducation nationale,
de l'Enfance et de la Jeunesse

L'ÉDUCATION NON FORMELLE GRATUITE POUR VOTRE ENFANT

Un pas de plus vers l'égalité des chances

L'éducation non formelle (maisons relais, assistants parentaux, ...) joue un rôle essentiel dans l'épanouissement de votre enfant et pour ses chances de réussite. Elle complète l'éducation formelle dispensée à l'école. Elle permet à votre enfant de développer, dans une ambiance décontractée, les compétences essentielles : langage, motricité, relations sociales, créativité, aptitudes techniques, participation active.

C'est pourquoi l'éducation non formelle devient encore davantage accessible. À partir de la rentrée 2022-2023, le ministère de l'Éducation nationale, de l'Enfance et de la Jeunesse rend en effet gratuit l'accueil dans les structures d'éducation non formelle pendant les semaines d'école, pour les enfants scolarisés à l'enseignement fondamental (à compter de l'obligation scolaire).



Pour plus d'infos,
voir sur le site
staarkanner.lu

Que font les enfants dans les structures d'éducation et d'accueil ?

En maison relais, mini-crèche ou chez un assistant parental, votre enfant découvre des activités ludiques et récréatives.

Une *Hausaufgabehëllef* (aide aux devoirs à domicile) sera également offerte dans toutes les structures d'éducation et d'accueil. Grâce à un *E-Bichelchen* (journal de classe digital), vous pourrez échanger avec l'enseignant et l'éducateur sur les devoirs à domicile de votre enfant.

L'ÉDUCATION NON FORMELLE ACCESSIBLE À TOUS LES ENFANTS



www.staarkanner.lu

Dans quelles structures d'éducation et d'accueil l'accueil est gratuit ?

La gratuité concerne toutes les structures d'éducation et d'accueil pour enfants scolarisés : maisons relais (appelées parfois aussi foyers de jour ou foyers scolaires), mini-crèches et assistants parentaux.

Qui est concerné par la gratuité ?

Si votre enfant a 4 ans accomplis au 1^{er} septembre (début de l'obligation scolaire), et qu'il fréquente l'enseignement fondamental ou l'équivalent, il profite de la gratuité. L'éducation précoce n'est pas concernée.

Quelles sont les périodes gratuites ?

La gratuité de l'accueil porte sur les semaines d'école, du lundi au vendredi de 7h à 19h. Pour les heures d'accueil avant 7h et après 19h, la participation financière des parents suit le **barème** du chèque-service accueil (CSA).

Quels sont les tarifs pendant les vacances ?

Les semaines de vacances ne sont pas gratuites. La participation financière des parents n'est plus plafonnée par un forfait : c'est le **barème** du CSA qui s'applique.

Comment puis-je profiter de la gratuité ?

Si votre enfant fréquente déjà une structure d'éducation et d'accueil, vous n'avez rien à faire.

Si ce n'est pas encore le cas, vous devez d'abord adhérer au système du chèque-service accueil (CSA). Pour adhérer au CSA, rendez vous dans votre commune, si vous habitez au Luxembourg. Si vous êtes frontalier, adressez-vous à la **Caisse pour l'avenir des enfants**.

Vous pourrez ensuite inscrire votre enfant auprès d'une structure d'éducation et d'accueil **prestataire du CSA**. Il y sera admis selon les places disponibles.

Les repas sont-ils aussi gratuits ?

Pendant les semaines d'école, les repas de midi sont aussi gratuits pour tous les enfants soumis à l'obligation scolaire. Pendant les vacances, la gratuité des repas est réservée aux familles disposant d'un revenu inférieur à deux fois le salaire social minimum. Pour les autres familles, c'est le **barème** du CSA qui s'applique.

Social and Support Services

Médico-Social Service

SCHEUER Monique (social assistant) monique.scheuer@ligue.lu

Centre Médico-Social : 2, rue G.C. Marshall · L-2181 Luxembourg

Pupil Support Team (ESEB) - Oppent Ouer

Regional director: BETTINELLI David

Deputy directors: DIEDERICH Monique, HAUFFELS Jackie (ESEB), LEMMER Nadine

Contact Regional director: Tél.: 247-55110
E-mail: secretariat.mamer@men.lu

Support team for pupils with particular or specific educational needs (Eseb):

Tél.: 247-55105
E-mail: ci.mamer@men.lu

New address : Direction de l'enseignement fondamental – Région 2

2-4, parc d'activités Capellen (Building. C) · L-8308 CAPELLEN

Social Service - Krank Kanner Doheem

The „Service Krank Kanner Doheem“ is one of the services of „Femmes en Détresse asbl“, which offers individual care at home for sick children. This allows parents to continue their professional activity and children to recover in the best conditions and in their family environment.

Applications from single-parent families are given priority. The taxable income of the household will be taken as the basis for calculating the contribution to childcare costs.

For single-parent families, the household composition certificate, drawn up by the municipality is required.

Childcare takes place between 07.00 and 19.00. The duration of a shift cannot exceed 9 hours in a row. A medical examination is required on the second day of the day care.

All staff members of the „Service Krank Kanner Doheem“ are trained in the field of family welfare and regularly participate in internal training courses.

The „Service Krank Kanner Doheem“ service is financed by parents' contributions, donations and an agreement between Femmes en Détresse asbl and the Ministry of Equal Opportunities.

In order to facilitate the organisation of childcare, please complete an online registration form www.fed.lu

Contact:

95, rue de Bonnevoie
L-1260 Luxembourg

Tél.: 48 07 79

Info: www.skkd.lu



Municipal subsidy

Since August 2016, the Municipality of Mamer has provided a subsidy amounting to 50% of the amounts invoiced (but not exceeding an amount of € 150 per child / school year) by the Service for sick children at home.

More information and the form to be completed at www.mamer.lu.

Sick children must stay at home and cannot be sent to school or to the Day Care Centre.

Association of parents of APEM pupils

The committee

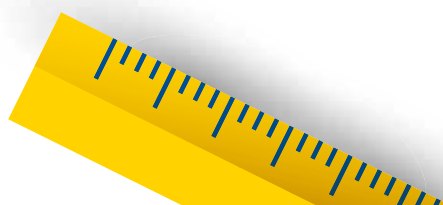
President: FELIX Sandra
Treasurer: GIORGIO GAGGIA Eugenio
Secretary: WEIS-KOLLWELTER Isabelle
Members: CLABOTS Fabienne; DELIC Mirela; FERBER Elvire;
FABER Carine; DE FLORA Angela; MAUER Katia;
GRUNOW Dunja; MAUSEN-BERTEMES Alexandra;
PAPADOPOULUS-ALVANOU Eleonora; PETRENKO Ivan;
RIBEIRO Pedro
Contact: WEIS-KOLLWELTER Isabelle
isabellekollwelter@gmail.com
Tél.: 621 325 996



Association of parents of APECH pupils

The committee

President: ARRENSDORFF Kim
Vice-President: KNEPPER-FRISCH Anne
Treasurer: BOEHLER Jenny
Secretary: RIBEIRO Tania
Members: TARANTINI Vanessa; HUSSEIN Shimaa; JAMINET Françoise;
WATRY Yves;
Contact: RIBEIRO Tania
associationapech@gmail.com
Tél.: 661 78 78 85



Art at school

The Commission for Cultural Affairs of the Municipality of Mamer offers art workshops in schools with the artist Iva Mrazkova for children in cycles 2.2 to 4.2. during the week and after school. Approaching art through various techniques (drawing, painting, sculpting, modelling and so on), the workshops target above all the children's creativity. The parents of the pupils concerned will be in-

formed by letter of the organisation of the courses at the beginning of the school year. The courses will be held on Thursday afternoons from 14.00 to 15.30 pm for cycles 2.2 and 3.1 and from 16.00 to 17.30 pm for cycles 3.2 to 4.2 at the Kinneksbond Campus. Places are limited.

Commissions des Affaires Culturelles:
E-mail: cac@mamer.lu



Music and school

The Commission for Cultural Affairs offers six music workshops during school hours, allowing children in cycles 2 to 4 to discover different musical instruments (guitar, saxophone, string instruments, percussion, and so on ...).

Commissions des Affaires Culturelles:
E-mail: cac@mamer.lu



LASEP 2022-2023

Timetables and organisation

Sports activities are organised by LASEP (Ligue des Associations Sportives de l'Enseignement Primaire) for children in primary and pre-school classes. Details of the organisation and enrolment procedures will be communicated to pupils at the beginning of the school year.

The activities are held at the Kinneksbond sports hall in Mamer and at the sports hall on the Capellen school campus. The sessions will start at the beginning of October.

Head:

CASOLI Daniel (teacher)

daniel.casoli@mamerschoulen.lu

LASEP Mamer:

TUESDAY:

Cycle 2: 1.30 PM to 2.30 PM

Cycles 3 et 4: 2.30 PM to 3.30 PM

THURSDAY:

Pre-school A: 1.30 PM to 2.30 PM

Pre-school B: 2.30 PM to 3.30 PM

Groupe A pre-school:

Children enrolled in the classes of Mrs FELLER, Mrs ZEIEN, Mrs COLLE and Mrs DARNE/CHERRY.

Groupe B pre-school:

Children enrolled in the classes of Mrs LEHNERS, Mrs PERL, Mrs PEZZOLI and Mrs DA SILVA PINTO-

LASEP Capellen:

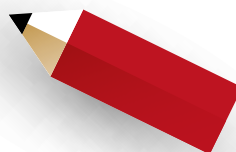
MONDAY:

Cycle 1: 4.00 PM to 5.00 PM (pre-school)

MARDI:

Cycles 2: 2.00 PM to 3.00 PM

Cycles 3-4: 3.00 PM to 4.00 PM



The safe route to school

INCREASED CARE AT THE START OF THE SCHOOL YEAR

Especially younger children are not yet aware of the dangers of the road and are less visible because of their small size. Added to this is a certain amount of excitement at the start of the school year, which can make them forget the basic rules of the road. Special care is therefore required from all road users:

- Be careful and watch out for children.
- Adapt your speed in the vicinity of schools.

LEFT, RIGHT, LEFT ...

- I always walk on the safe side of the pavement, away from cars.
- I cross the street at the pedestrian crossing: red I have to stop, green I can walk but I stay alert. If there are no traffic lights, I look left, right and left again before crossing the street.
- If there is no pedestrian crossing, I wait at the line of sight where I can see the road and where drivers can see me. Then left, right, left ...

PARENTS ACT AS AN EXAMPLE!

- Explain the basic rules of the road to your child(ren).
- Make your child/children aware of the dangers of the road.

- Drive to school together several times.
- Respect the Highway Code yourself: do not park on pedestrian crossings or on the pavement.
- Make sure your child always gets in and out of the car on the pavement side.

Parents are asked not to park in front of garage entrances when taking their children to school or when picking them up

I AM VISIBLE!

To make it easier for drivers to see me in the dark, I wear:

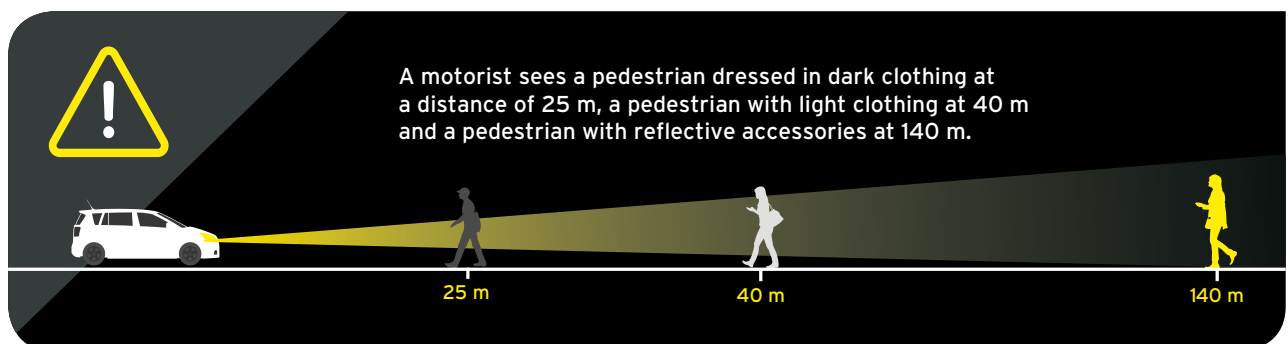
- light-coloured clothes,
- reflective tape on my clothes and schoolbag,
- a high-visibility jacket



SEAT BELTS AND CHILD SEATS!

Even for short journeys!

- In the car, children should always be secured, either with a seat belt or in a child seat.
- A child between the ages of 3 and 17, whose height is less than 150 cm, must be transported in a child seat or booster seat that corresponds to his or her height and weight.





Lycée Josy Barthel in Mamer

You, nature and science:

Welcome to the Lycée Josy Barthel in Mamer!

The Lycée Josy Barthel Mamer has 1.350 students of different nationalities. Our school offers students an excellent academic environment with a wide range of academic courses. We have a strong commitment to nature and carry out many sustainable projects. Our infrastructure is equipped with a swimming pool, a climbing wall and students have many other possibilities to do sports both indoors and outdoors. We have our own biotope, a beautiful park, and the Mamer Valley (Mamerdall) is nearby.

Whether it is classical secondary education, general secondary education or vocational training, our main interests are science, architecture and languages.

Scan the QR code to see what our school offers.

A well-trained team of almost 200 teachers has been accompanying students on this journey since 2003, in an unparalleled, family-like and friendly atmosphere, where the necessary discipline is not neglected. Solidarity, sustainable development, common values and a modern and quality education oriented towards digital skills, prepare the pupils adequately for the baccalaureate exams and for professional life after the Lycée.

Enrol in our school!

We will be delighted to welcome you!

Claude CHRISTNACH
Director



Contact:

2, rue Gaston Thorn
L-8268 MAMER
Tél.: 26 31 40-1
www.ljbm.lu



sms2citizen



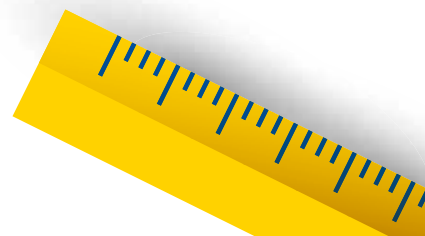
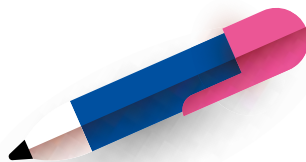
In order to be well informed at all times: sms2citizen

sms2citizen is a free messaging service provided by the municipal administration. This alert service allows citizens to be kept informed of important, serious and last-minute municipal events. Messages are sent free of charge by SMS to users' mobile phones or smartphones.

Registration is easy via the website www.sms2citizen.lu

The Municipality offers several groups in which you can register: Apart from the groups „Mamer“, „Capellen“ and „Holzem“, a great deal of importance is attached to information for pupils and parents of pupils in the Municipality with the groups „Primary School“ and „School Transport“.

Registration and use of sms2citizen service are free of charge



A new Day Care Centre for the Mamer School

The Municipality of Mamer is constantly growing. In particular, more and more young families are settling in the Municipality. Some 600 children attend the primary school on the Kinneksbond Campus in Mamer. The trend is upwards. In addition to school activities, there is a growing demand for extracurricular activities. That is why the Municipal Council decided to build a brand-new Day-Care Centre on the Kinneksbond Campus.

The project is located at the south-western end of the campus and provides for the creation of a new multifunctional building to house the Day Care Centre. It will be able to accommodate up to 220 children. The modular building, with a total surface area of 2.500 m², will house offices, refectories, classrooms, workshops and

a small gymnasium of 110 m² on three levels. A playground of 550 m² will also be created. About 110 children will be able to play there.

The new Day Care Centre is also characterised by its environmental aspect. The building will be built according to the passive house standard (A classification). A photovoltaic system will be installed on the roof. The installation of pellet heating and a ventilation system with heat recovery are also planned. It should be noted that rainwater is collected in a cistern and can be used for flushing and watering.

Work began in 2021. It should be completed by the end of 2022. The cost of this ambitious project has been set at EUR 9.996.000.









Holidays: school year 2022/2023

The school year begins on Thursday 15 September 2022 and ends on Friday 14 July 2023.

All Saints:	Saturday 29 October 2022 to Sunday 6 November 2022
St. Nicolas:	Tuesday 6 December 2022
Christmas:	Saturday 24 December 2022 to Sunday 8 January 2023
Carnival:	Saturday 11 February 2023 to Sunday 19 February 2023
Easter:	Saturday 1 April 2023 to Sunday 16 April 2023
Labour Day:	Monday 1 May 2023
Europe Day:	Tuesday 9 May 2023
Ascension:	Thursday 18 May 2023
Whitsun:	Saturday 27 May 2023 to Sunday 4 June 2023
National Day:	Friday 23 June 2023
Summer holidays:	Saturday 15 July 2023 to Thursday 14 September 2023

www.men.public.lu

www.mamerschoulen.lu

