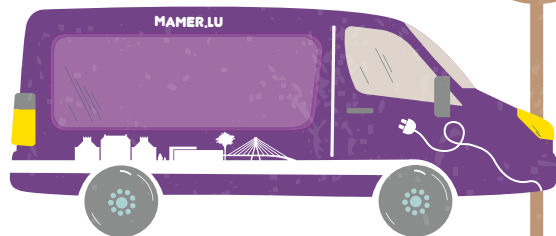
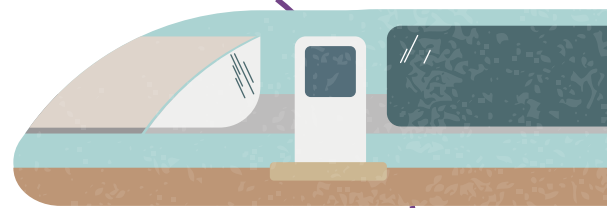
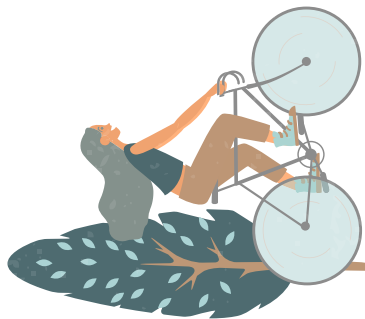
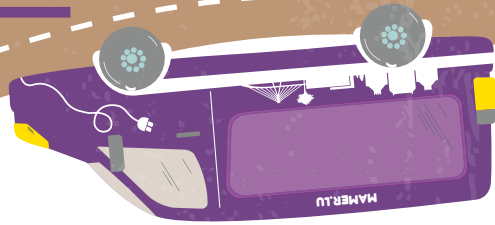


# MOBILITY

MUNICIPALITY OF MAMER



# TABLE OF CONTENTS



4-15

## 01 PUBLIC TRANSPORT

- 1.1 Train ----- 4-5
- 1.2 The national RGTR bus network 6-7
- 1.3 Ruffbus ----- 8-9
- 1.4 Late Night bus ----- 10-11
- 1.5 Night Rider ----- 12-13
- 1.6 School transport and Pedibus 14-15

## MOBILITY SUBSIDIES

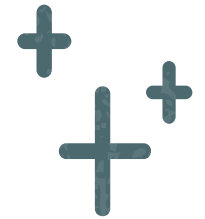
page ----- 28



16-28

## 02 INDIVIDUAL MOBILITY

- 2.1 Flex Carsharing ----- 16-17
- 2.2 Chargy charging points ----- 18-19
- 2.3 Vel'OH ----- 20-21
- 2.4 Cycling and hiking trails ----- 22-23
- 2.5 Guidance system for pedestrians 24-25
- 2.6 Cleaning stations for bicycles ----- 26
- 2.7 Verkeiersgaart ----- 27
- 2.8 Subsidies ----- 28



For reasons of environmental protection and in order to save paper and resources, the printed version of this brochure will only be distributed in French to all households. German and English versions are available as PDF downloads on the website [www.mamer.lu](http://www.mamer.lu).



Aus Gründen des Umweltschutzes und um Papier und Ressourcen zu schonen, wird die vorliegende Broschüre in gedruckter Form nur in französischer Sprache an alle Haushalte verteilt. Sprachversionen in Deutsch und Englisch sind als PDF-Download auf der Website [www.mamer.lu](http://www.mamer.lu) verfügbar.

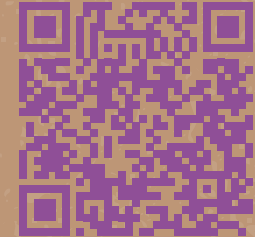


Pour des raisons de protection de l'environnement et afin d'économiser du papier et des ressources, la version imprimée de la présente brochure sera uniquement distribuée en français à tous les ménages. Des versions en allemand et en anglais sont disponibles sous forme de téléchargement PDF sur le site Internet [www.mamer.lu](http://www.mamer.lu).

DEUTSCH



FRANÇAIS



## Mobility with a capital M

Mobility is a key component in terms of quality of life. Good transport connections play an important role in almost all decisions that are made in everyday life. The choice of where to live and work is just as much a part of this as the choice of amenities and leisure activities. Participation in social life is also often linked to it.

These are all reasons that make the mobility of today and tomorrow one of the core issues that the College of Aldermen of the municipality of Mamer wants to address. In the interests of an inclusive transport policy and to create added value for citizens and the environment, the various means of transport available must be intelligently networked with one another.

For this reason, we favour further developing the existing transport concept of our commune. This concept should be based on the principles of both intermodal mobility and multimodality. Whether you want to combine different modes of transport for one route or prefer a specific mode of transport depending on the route, we aim to offer you various options so that you have a free choice.

As set out in our declaration of the College of Aldermen for the next six years, electromobility as a future technology is a key element of our endeavours in this area. We will therefore be focussing even more on electric buses and vehicles and promoting the installation of charging stations for electric vehicles throughout the municipality. We will also continue to promote cycling as a particularly environmentally friendly form of transport for short and medium distances. This will be done in particular by making the road network safer for cyclists.

This brochure provides you with a comprehensive overview of the mobility options available in the municipality of Mamer in a clear and concise manner. Thanks to the QR codes on almost every page, you can call up additional information with your mobile phone or be forwarded directly to the timetables of the various means of transport.

The table of contents is divided into two main sections: public transport and individual mobility. You will also find a page dedicated to the subsidies granted by the municipality in the area of mobility, which are subject to certain conditions.

You will be given an overview of the various links that you can use to organise your route according to your needs. Whether RGTR bus, train, Flex Carsharing, Vel'OH rental bike, Ruffbus, Nightrider or Late Night Bus, our offer is intended to provide all road users, regardless of their age, with an alternative to their own car in order to ensure better accessibility, reduce congestion on our roads and thus achieve a higher quality of life and contribute to environmental protection.



# 01. PUBLIC TRANSPORT

## 1.1 TRAIN

**The municipality of Mamer is served by three railway stations: Mamer, Capellen and Mamer-Lycée.**

Both Capellen and Mamer stations have a park-and-ride car park and a waiting room. The car parks also offer reserved spaces for people with reduced mobility.

Recently, two additional Vel'Oh stations have been installed in front of the station building in Mamer and in the car park of the station in Capellen. A Chargy charging station and two Flex parking spaces are also available at the entrance to the car parks.

Line 50 (Luxembourg-Kleinbettingen-Arlon) runs according to a regular timetable.

Travellers can also use the bike boxes in the car parks at Mamer and Capellen stations to park their bikes.



Bikeboxes are secured areas where you can park your bike safely. These bike parks promote multimodality and reduce the risk of theft and vandalism.

### BIKEBOX





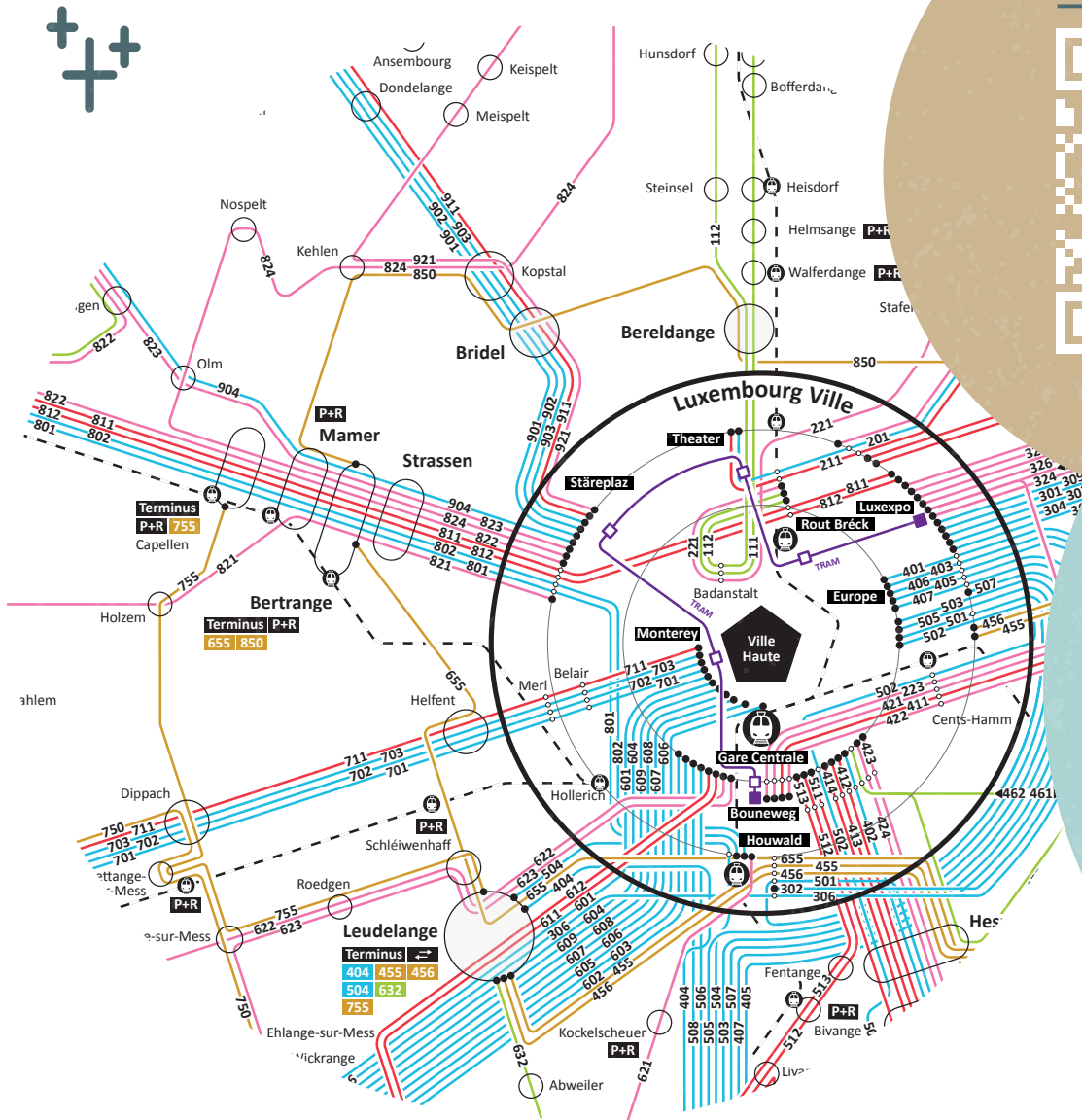
 **CAPELLEN  
MAMER  
MAMER-LYCÉE**



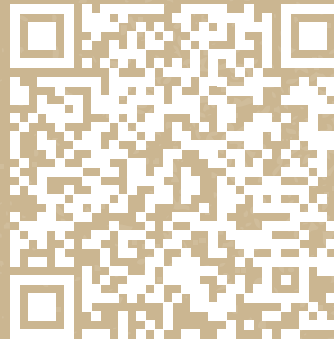
**TIMETABLES**



## 1.2 THE NATIONAL RGTR NETWORK



Timetable of the RGTR network



These are the bus routes that serve the municipality of Mamer:

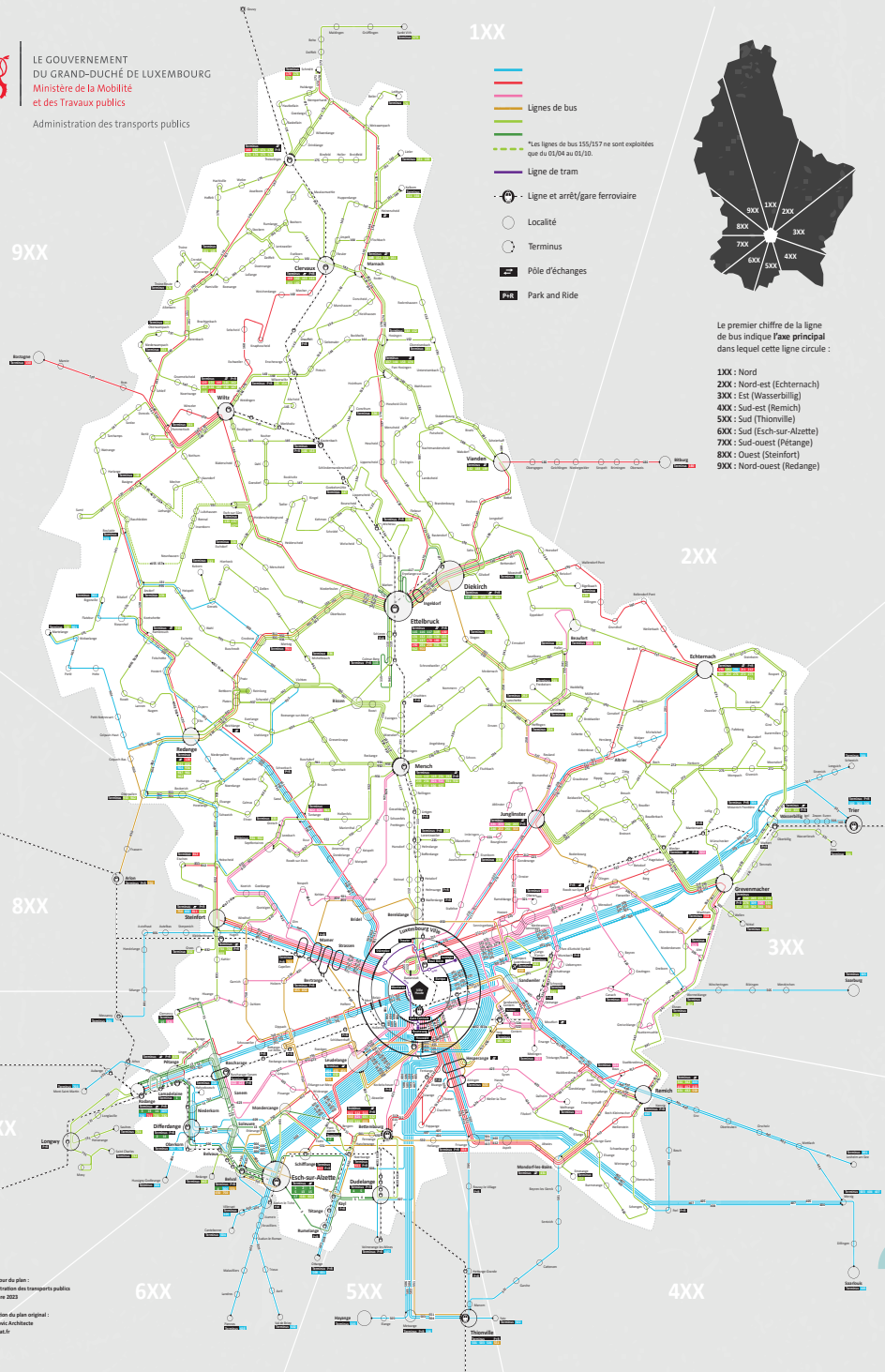
- 755 Capellen** – Leudelange
- 801 Howald** – Sélange (B) – Messancy (B)
- 802 Howald** – LUX Centre – Steinfort
- 811 LUX Kirchberg** – Steinfort
- 812 LUX Kirchberg** – Hagen – Eischen
- 821 LUX Centre** – Garnich – Clemency
- 822 LUX Centre** – Tuntange (via Windhof)
- 823 LUX Centre** – Koerich – Tuntange
- 824 LUX Centre** – Kehlen – Mersch Gare
- 850 Findel** – Bertrange
- 904 Lux Centre** – Hobscheid – Rédange

# Le réseau national de bus 2024

RGTR



LE GOUVERNEMENT  
DU GRAND-DUCHÉ DE LUXEMBOURG  
Ministère de la Mobilité  
et des Travaux publics  
Administration des transports publics



[WWW.RGTR.LU](http://WWW.RGTR.LU)

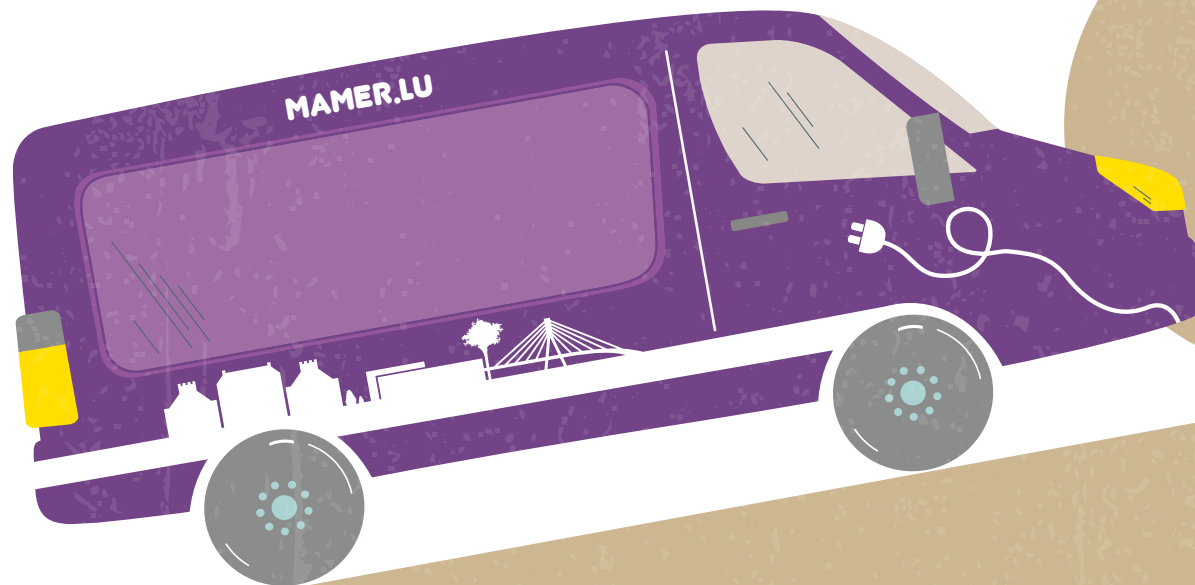


The **RGTR** buses operate on the territory of the municipality of Mamer since 2016 and the network is constantly evolving.

It has been gradually reorganised in various phases to improve the mobility of users.



## 1.3 RUFFBUS



**FREE OF  
CHARGE 7/7**

**TEL:  
2810 831**

**8:00 AM – 8:00 PM**



The Ruffbus Gemeng Mamer is the free, personalised shuttle service for the citizens of the municipality.

This system of electric minibuses is available daily (except on public holidays) from 8:00 am to 8:00 pm for shopping, medical appointments, visits to the authorities, leisure activities and other purposes. It offers a door-to-door transport service on request and can be enquired about by calling 2810 831.

There are no fixed stops in the ten municipalities served, except for Luxembourg City (see info box).

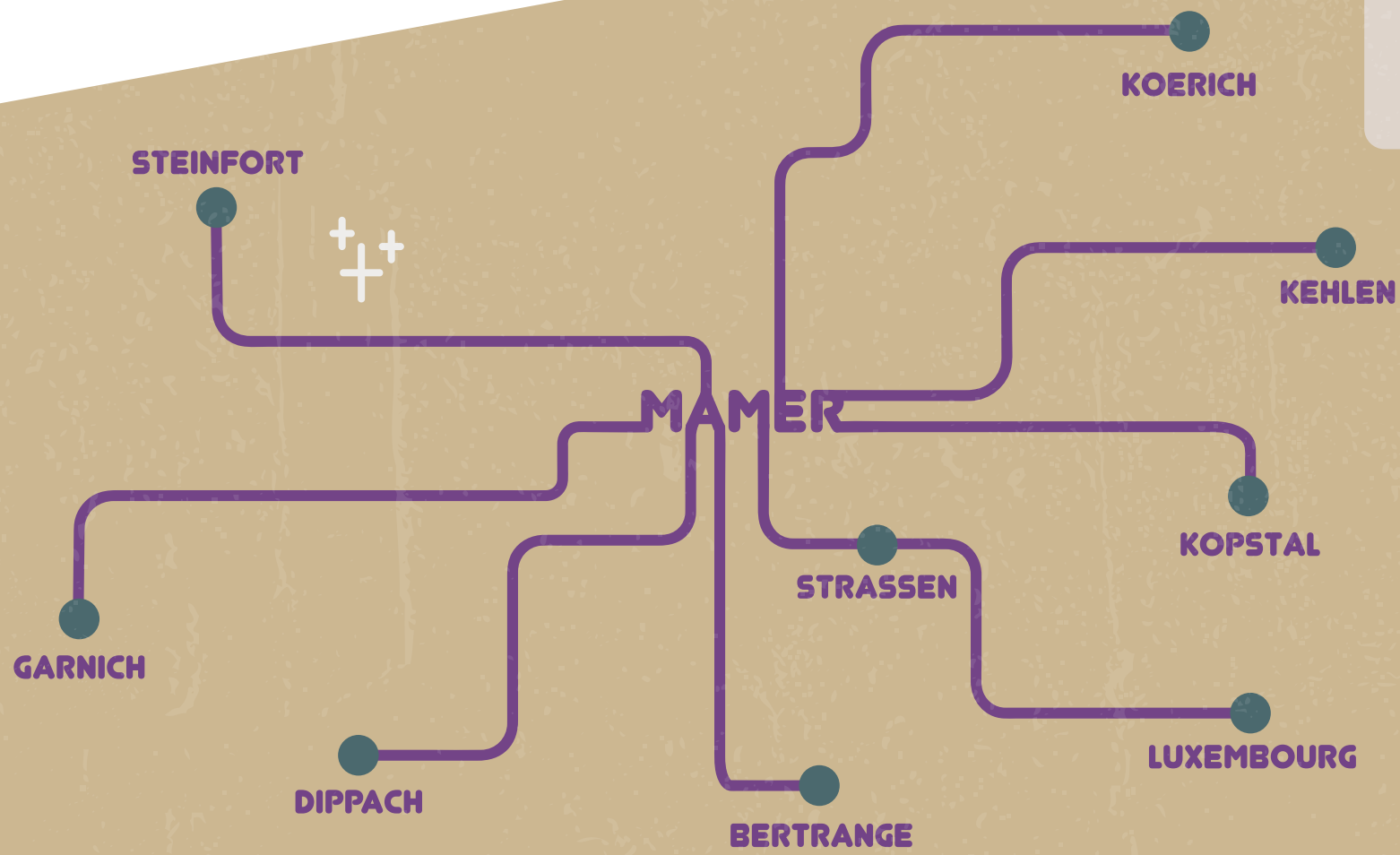




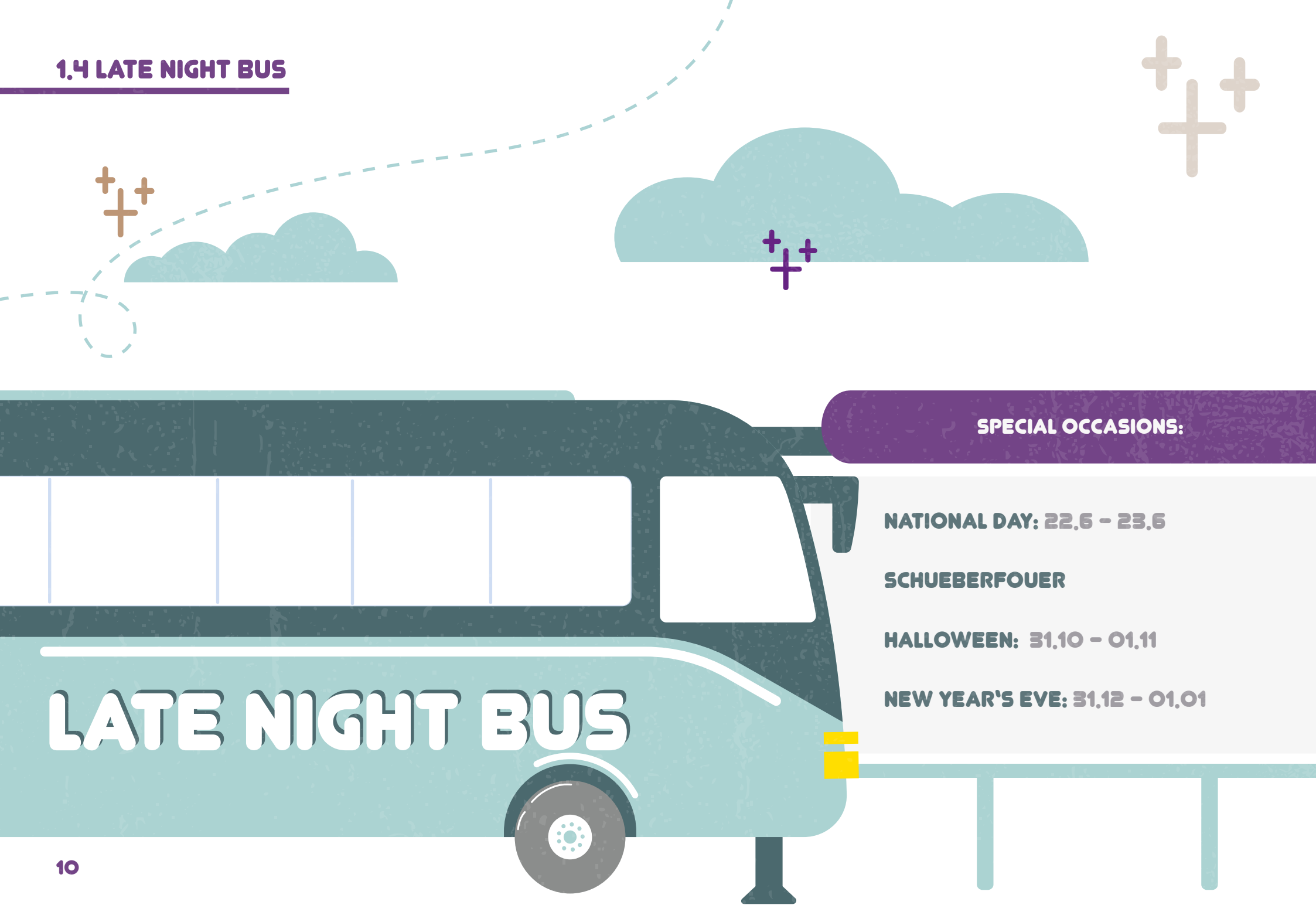
**FIXED STOPS ONLY ON THE TERRITORY OF THE CITY OF LUXEMBOURG**

---

- CHL
- Place de l'Étoile
- Zithaklinik
- Hôpital Kirchberg
- Clinique Bohler
- Rehazenter Kirchberg
- CHL Eich



## 1.4 LATE NIGHT BUS



### SPECIAL OCCASIONS:

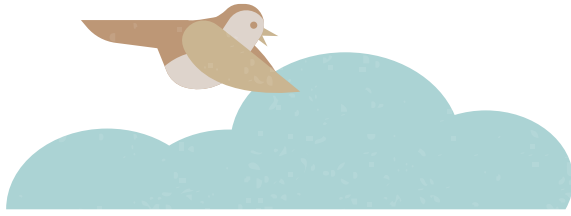
**NATIONAL DAY: 22.6 - 23.6**

**SCHUEBERFOUER**

**HALLOWEEN: 31.10 - 01.11**

**NEW YEAR'S EVE: 31.12 - 01.01**

**LATE NIGHT BUS**



## STEINFORT



## HOLZEM



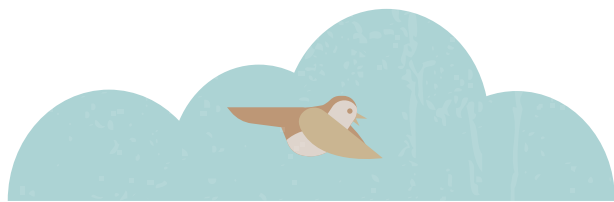
The Late Night Bus enables residents of the municipality to travel safely and free of charge to and from the capital at the weekend.

Two lines - Holzem and Steinfort - run on Fridays and Saturdays from 11 pm to 4 am between the municipality of Mamer and Luxembourg City.

The Late Night Bus is also used on special occasions (see opposite).



## 1.5 NIGHT RIDER



The Night Rider is an individual night shuttle without fixed timetables or stops.

On request and by prior reservation, the Night Rider picks up its customers at home on Fridays and Saturdays from 6:00 pm to 5:00 am and takes them to a location of their choice in the country.

This is a shared transport, which means that other passengers get on or off during the journey. For this purpose, the Night Rider rarely travels direct routes, but without making any major detours.

The transfer costs of guests in possession of the Night Card Mamer are covered by the municipality, provided that the departure point or destination is within the municipal area (Mamer, Capellen, Holzem).

The annual price for the Night Card (to be paid by the interested parties themselves) is

- 25€ /year for citizens under 26 years of age ;
- 50€ /year for citizens over 27 years of age.

The application for a Night Card is made online.






The journey is booked up to 60 minutes before the desired departure time. About 10 minutes before the pick-up time, you will receive a text message informing you of the shuttle's arrival. All you then have to do is go to the pick-up point at the specified time.

### Book your journey

The route can be booked online



or by telephone  
on **900 71 010**

## 1.6 SCHOOL TRANSPORT

The school transport service is aimed exclusively at children attending pre-school or fundamental school in the municipality.

Use of the school transport service requires prior registration with the municipal education service.

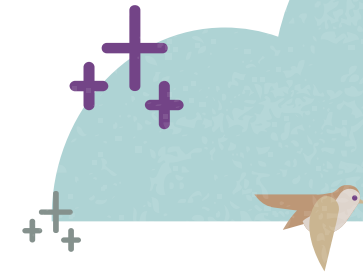
The 'Schoulwée' logo is visible on the ground along the route of the Pedibus and the school bus logo is displayed at the bus stops.

### SCHOOL BUS

Our school buses take pupils to and from school at set times. The different routes are illustrated with pictures of animals to avoid confusion around the bus stops and the risk of getting on the wrong bus. An adult accompanies all bus journeys.

### PEDIBUS

The Pedibus is a transport system in which children walk to school and are accompanied by chaperones employed by the municipality. The children wait for the Pedibus at the agreed meeting point (bus stop) and then walk to school together.





## 02. INDIVIDUAL MOBILITY

### 2.1 FLEX CARSHARING



No	Name of Station	Address	Code Postal	Locality	Vehicle	Commissioned
1	Mamer train station	2, rue de la Gare	L-8229	Mamer	VW ID.4	2023
2	Mamer train station	2, rue de la Gare	L-8229	Mamer	VW ID.Buzz Cargo	2023
3	Car parc Kinneksbond	42, route d'Arlon	L-8210	Mamer	Fiat Talento	2022
4	Car parc Kinneksbond	42, route d'Arlon	L-8210	Mamer	Audi A1	2020
5	Capellen Business park	85-87 Parc d'Activités Capellen	L-8308	Capellen	Audi A1	2020
6	Place Kiem	2, rue du Kiem	L-8328	Capellen	VW ID.4	2023
7	Place Kiem	2, rue du Kiem	L-8328	Capellen	VW ID. Buzz Cargo	2023
8	Capellen train station	106, rue de la Gare	L-8325	Capellen	VW ID.4	2023
9	Capellen train station	106, rue de la Gare	L-8325	Capellen	VW ID.4	2023
10	Holzem Centre	Rue du Centre	L-8219	Holzem	VW ID. 4	2023
11	Holzem Centre	Rue du Centre	L-8219	Holzem	VW ID Buzz Cargo	2024

With the introduction of the Carsharing system Flex from CFL, the municipality of Mamer has added another link to its mobility chain.

There are 10 Flex parking spaces in the municipality. A total of 11 hire vehicles are currently available.

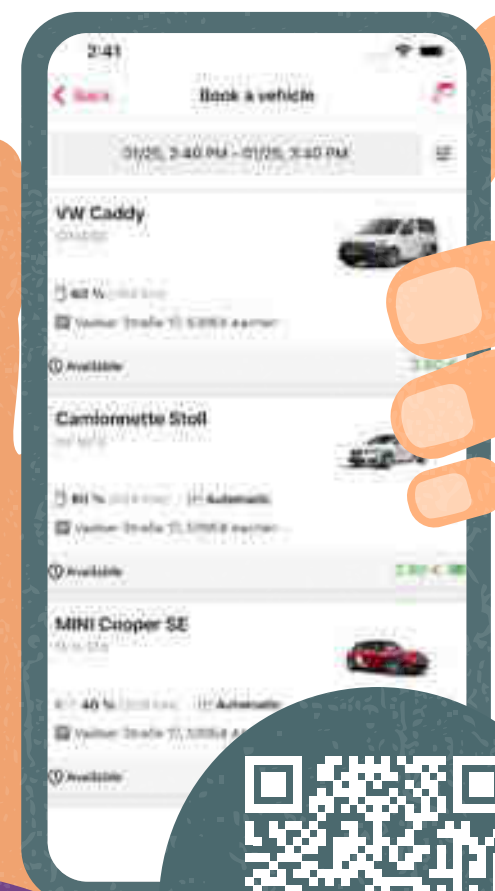
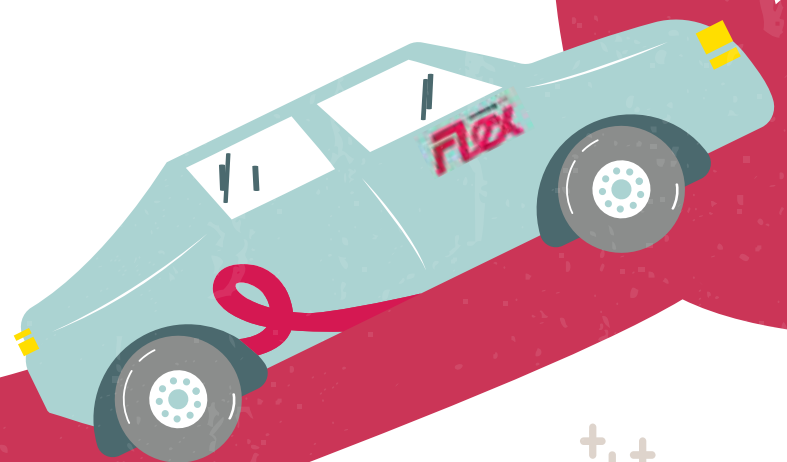
The fleet is gradually being supplemented with electric vehicles.

Most of the stations of CFL's Flex car sharing solution are connected to the public transport network.





# 2

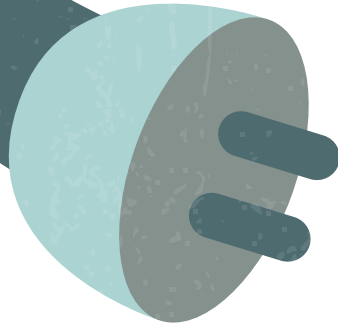


## 2.2 CHARGY CHARGING STATIONS



No	Name of Station	Locality	Power	Terminal Type	No. of terminals	No. of connection	Implementation service
1	Municipal administration car park	Mamer	2 connectors 22kW, Type 2 connector	Chargy	1	2	2019
2	Mamer - P&R train station	Mamer	2 connectors 22kW, Type 2 connector	Chargy	1	2	2023
3	Car park rue du Millénaire	Mamer	2 connectors 22kW, Type 2 connector	Chargy	1	2	2023
4	Car park rue Maximins	Mamer	2 connectors 22kW, Type 2 connector	Chargy	1	2	2023
5	Nicolas Frantz sports hall car park	Mamer	2 connectors 22kW, Type 2 connector	Chargy	1	2	2019
6	Car park Mambra	Mamer	2 connectors 22kW, Type 2 connector	Chargy OK	1	2	2024
7	Car park Gaaschtberg	Mamer	2 connectors 22kW, Type 2 connector	Chargy OK	1	2	2024
8	Car park Campus Kinneksbond	Mamer	2 connectors, 22kW, Type 2 connector	Chargy OK	1	2	2024
9	Car park ZA Pafebruch	Capellen	2 connectors 22kW, Type 2 connector	Chargy	1	2	2019
10	Car park rue du Kiem	Capellen	2 connectors 22kW, Type 2 connector	Chargy OK	1	2	2023
11	Car park Campus Scolaire	Capellen	2 connectors 22kW, Type 2 connector	Chargy	1	2	2019
12	Car park Zolwerfeld II	Capellen	2 connectors 22kW, Type 2 connector	Chargy OK	1	2	2021
13	Capellen - P+R train station	Capellen	2 connectors 22kW, Type 2 connector	Chargy	1	2	2023
14	Rest area Capellen direction Arlon	Capellen	12 connectors 400kW, Type 2 connector	SuperChargy	12	12	2022
15	Rest area Capellen direction Luxembourg	Capellen	3 connectors 400kW, Type 2 connector 3 connectors 350kW, Type 2 connector	SuperChargy	6	6	2022
16	Car parc Verhainshaus	Holzem	2 connectors, 22kW, Type 2 connector	Chargy OK	1	2	2023
17	Car parc Place de la Résistance	Holzem	2 connectors, 22kW, Type 2 connector	Chargy	1	2	2023





Public Chargey charging stations for electric vehicles and plug-in hybrids are located at various locations within the municipal area.

As the number of electric cars is constantly increasing, the network of charging stations will also be adapted and continuously expanded in the future.

To identify yourself at a charging station in the Chargey network and pay for your consumption, all you need to do is show your mKaart or another form of ID issued by a charging service provider operating in the Chargey network.



## 2.3 VEL'OH

No	Name of Station	Address	Postal code	Locality	Commissioned
1	Mambra	106, route d'Arlon	L-8267	Mamer	2024
2	Mamer train station	2, rue de la Gare	L-8229	Mamer	2024
3	Lycée Josy Barthel Mamer	4, rue Gaston Thorn	L-8268	Mamer	2023
4	Gaaschtbiërg roundabout	Route d'Arlon/ Rue de la libération	L-8252	Mamer	2021
5	Nicolas Frantz sports hall	Rue de Bertrange / Hall Sportif Nicolas Frantz	L-8252	Mamer	2021
6	Municipal administration	Rue du Marché / Place de l'Indépendance	L-8252	Mamer	2021
7	Edemer	Quartier Edemer / Rue d'Athènes / Rue de Paris	L-8252	Mamer	2021
8	Place Kiem	route d'Arlon	L-8328	Capellen	2024
9	Capellen train station	106, rue de la Gare	L-8325	Capellen	2024
10	Sports and leisure park	13, Rannerwee	L-8334	Capellen	2024
11	Motel roundabout	Route d'Arlon n°1 / Route de Koerich : Rond point Motel	L-8310	Capellen	2021
12	Capellen school campus	Route d'Arlon n°49 / Place de l'Eglise / centre culturel	L-8310	Capellen	2021
13	Holzem festival hall	3, route de Garnich	L-8277	Holzem	2024
14	European School II	6, rue Gaston Thorn	L-8368	Bertrange	2023





The municipality is connected to the Vel'OH self-service cycle network. During 2024, there will be 14 stations in Mamer, Capellen and Holzem available.

The network itself comprises over 100 stations in Luxembourg City and neighbouring municipalities, connecting them to each other.

The docking stations are directly linked to a mobile application and a website.

The electrically assisted bikes are available 7 days a week, 24 hours a day and have a range of 30 to 40 kilometres.

Different types of subscriptions are available.

**Since 2021, the municipality of Mamer has been reimbursing the cost of the Vel'OH 'long-term' subscription.**



**14 STATIONS IN THE MUNICIPALITY WITH REAL-TIME AVAILABILITY OF BIKES ON THE MOBILE APP.**



**REGISTER:**



## 2.4 CYCLING AND HIKING TRAILS

An extraordinary landscape far away from any road traffic can be discovered by bike or foot on almost 122 kilometres in and around the municipality of Mamer. In addition, several routes in idyllic areas await hikers.

The existing network of cycle paths is constantly being expanded. The PC13 Nicolas Frantz cycle path and the Mamer-Eisch passage (PC 14) form a link in the national cycle path network.

Since spring 2023, a new 900-metre-long, safe connection for cyclists along the CR101 between Mamer and Holzem has been completed.

Coming from Capellen, the village of Holzem has also been connected to the PC13 Nicolas Frantz national cycle path for 700 metres.



### HIKING AND CYCLING PLAN





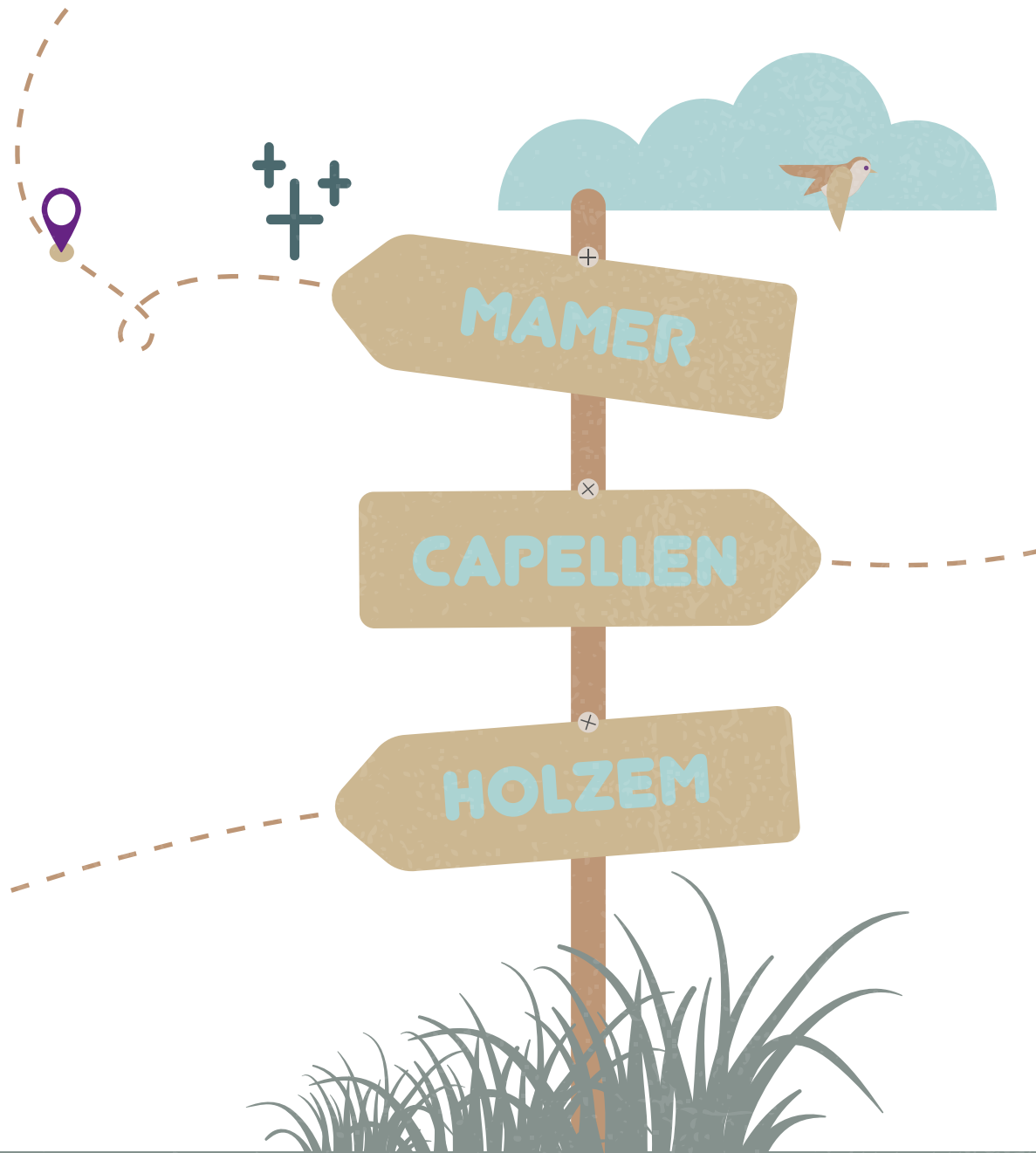
## 2.5 PEDESTRIAN GUIDANCE SYSTEM

To promote more sustainable mobility, support walking in the municipality and reduce dependence on motorised transport, a pedestrian guidance system was set up in the three localities of Mamer, Capellen and Holzem.

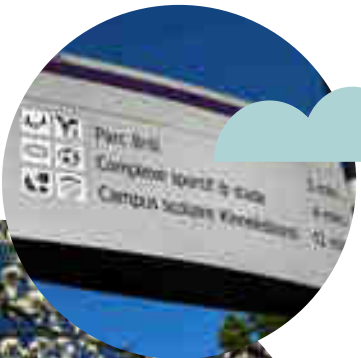
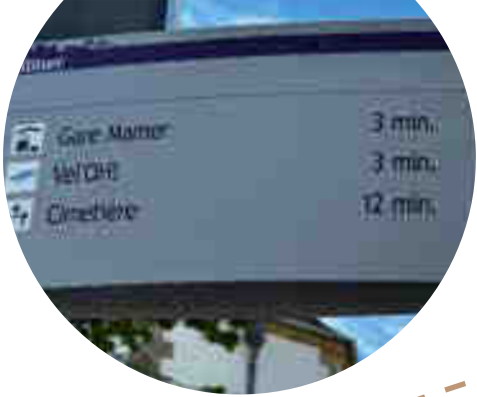
Since the concept was introduced in 2022, it has been a major innovation in the field of urban mobility and offers a unique feature: estimates of journey time in minutes, allowing users to plan their routes accurately and efficiently.

The aim is to show pedestrians the shortest and safest route from A to B within the urban space. The route to the various places of interest in the municipality is also shown. Distances are not given in kilometres, but in minutes.

The guidance system is constantly being expanded.







## 2.6 CLEANING STATIONS FOR BICYCLES

One of the stations, called 'CycleWash', is located on the grounds of the recycling centre in Mamer (7b, route de Dippach L- 8225 Mamer). The station works with a free magnetic card, which can be obtained from the Environment, Energy, and Mobility Department.

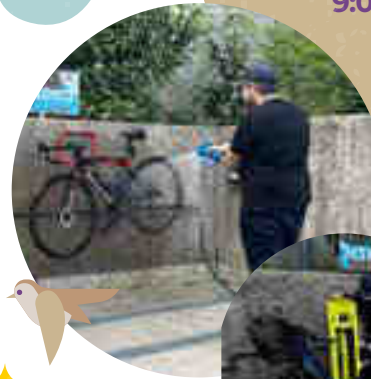
As the station is equipped with castors, it can also be moved for events.

In addition to the 'CycleWash', there is a second permanently installed car wash behind the Nic. Frantz sports hall. This wash station is equipped with a water jet and an air pump, as well as some tools for carrying out repairs. It is open all the time.

The cleaning facility at the Nic. Frantz sports centre is accessible at all times.

The station at the recycling centre is open from **Tuesdays to Fridays** from **9:00 am to 6:00 pm** and on **Saturdays** from **9:00 am to 1:00 pm**.

**USE IS FREE OF CHARGE**



## 2.7 VERKÉIERSGAART

The 'Verkéiersgaart' (traffic garden) is located in the Sports and Leisure Park in Capellen and serves to promote road safety education.

Children will find a practice area here that familiarises them with the rules of the road and sensitises them to the dangers of road traffic.

The area can be used freely by families and children. The functioning traffic lights are particularly popular with young cyclists.

The schools in Mamer and Capellen also organise road safety education here as part of their lessons and in cooperation with the police.



### The traffic lights are switched on:

Mondays, Wednesdays,  
Fridays from  
**4 pm to 7 pm**

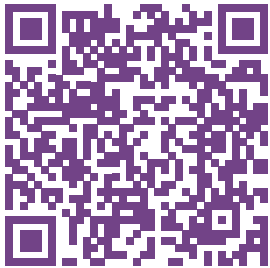
Tuesdays and Thursdays from  
**2:00 pm to 7:00 pm**

Saturdays and Sundays from  
**10:00 am to 7:00 pm**

## 2.8 SUBSIDIES

### Subsidies for investments in mobility

The municipality of Mamer grants its residents various subsidies in numerous areas, including mobility. The financial assistance related to mobility can be found in the 'Subsidies' brochure, which is available in three languages on the municipal website [www.mamer.lu](http://www.mamer.lu).



This guide provides a clear and quick overview of all the assistance on offer. The premiums and associated regulations are updated regularly.

NEW IN  
2024

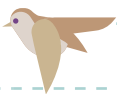
### 'InterRail' subsidy for young people aged 18

On the 1st of January 2024, a new subsidy was introduced to support 18-year-olds who want to explore Europe by train.

Upon application, the municipality will contribute financially to the cost of purchasing an InterRail ticket. The amount of this financial contribution is 90% of the ticket price, but may not exceed 500 euros.



# NOTES







## IMPRESSUM

**Published by:** Public Relations  
Department of the Commune of Mamer,  
Environment, Energy and Mobility  
Department

**Concept and realisation:**  
[creativecorner.lu](http://creativecorner.lu)

**Version:** May 2024



ADMINISTRATION COMMUNALE DE MAMER

1, PLACE DE L'INDÉPENDANCE  
L-8252 MAMER

(+352) 31 00 31 – 1

[WWW.MAMER.LU](http://WWW.MAMER.LU)